



PRODUCT CATALOGUE

Vol. **12.0**

Experience the Clover difference.



CLOVER MFG. CO.,LTD.



Yasuhiro Okada
President

Dear Friends,

Clover Mfg. Co., Ltd. is pleased and excited to present you with our new catalogue.

It is the excitement of many years of developing the highest quality Clover products that allows us to provide you with this catalogue.

You can feel comfortable that our products are readily available to you through our modern distribution centre. Our team of people, who care about their customers and take pride in their work, are ready to handle your needs.

It is a privilege to be a member of this team, and a part of a group that has formed a unique and enduring culture, in which it has distinguished itself as being the best in the industry.

Our customers are very important to us and we hope this catalogue expresses that. We strive to bring you the best, so that you can make each year the most successful. We hope you like what we have produced.

With sincere gratitude,

Yasuhiro Okada

Yasuhiro Okada
President

Contents



Bamboo Knitting Needles Takumi®	4
Crochet Hooks	16
Knitting Accessories	21
Black Gold Needles	31
Sewing, Quilting & Embroidery Needles	33
Pins	36
Thimbles	38
Sewing Notions	40
Marking Tools	42
Sewing Accessories	46
Wonder Clips	61
Bag & Totes Accessories	64
Slash Cutter	66
Scissors	67
Rotary Cutters	69
Cutting Mat	71
Tape Makers	72
Mini Iron II & Accessories	74
Trace 'n Create Quilt Templates with Nancy Zieman	75
Trace 'n Create Bag Templates with Nancy Zieman	76
Embroidery Stitching Tools	77
" <i>Kantan Couture</i> " Bead Embroidery Tools	78
"QUICK" Yo-Yo Makers	79
Kanzashi Flower Makers	80
Flower Frill Templates	81
Sweetheart Rose Makers	81
Wonder Knitter	82
French Knitter —Bead Jewelry Maker—	82
Flower Looms	83
Hair Pin Lace Tool	83
Pom-Pom Makers	84
Tassel Makers	85
Handy Thread Twister	85
Needle Felting Tools	86
Natural Wool Rovings	87
Tatting Shuttles	88
Picot Gauge Set	89
Mini Weaving Looms	90
Mini Beading Loom	90
Beading Loom	91
Rosette Makers	92



Bamboo Knitting Needles Takumi®

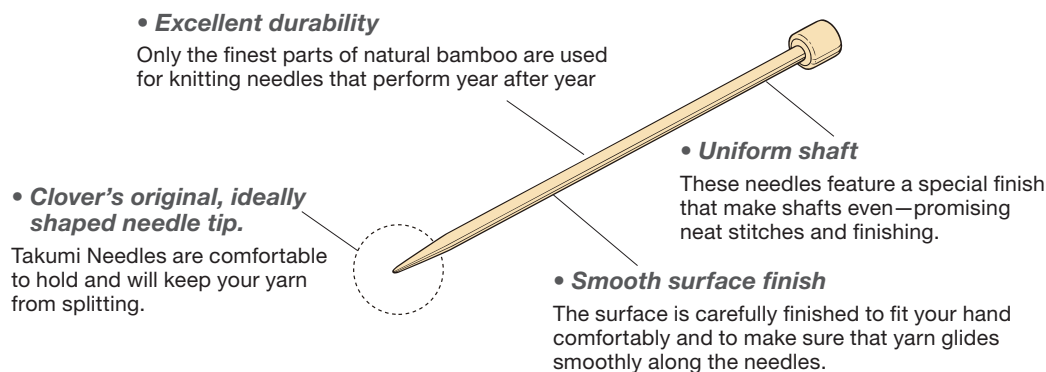
The art born from combining the finest raw materials and Clover's unmatched manufacturing technology.

Each and every one of these high quality bamboo knitting needles has been created utilising the properties of the finest natural materials.

Takumi Bamboo Knitting Needles have been created with Clover's long-nurtured manufacturing technology which maximizes the qualities of the finest natural bamboo to achieve even a smoother, heartfelt knitting experience. Their smooth surface and comfortable fitting are the result of Clover's consideration for knitters. You will still be able to find these needles comfortable even after long hours of knitting.

Feel and experience these knitting needles made of carefully selected natural bamboo.

Takumi's supreme quality also comes from Clover's excellent manufacturing technology



Bamboo that becomes Takumi®

Finest Top Quality Material

Bamboo is a strong, elastic and hardy fiber.

Its smooth surface and comfortable fit are the most desirable for knitting needles.

Only the most premium parts of the bamboo are used for the needles.

Place of origin is limited to cold areas with little snow.

Bamboo in cold areas with little snow is very resistant to bending making this bamboo most desirable for knitting needles.

Heavy snow conditions result in bent bamboo.

Appropriately aged Bamboo is selected.

Young bamboo less than 3 years old is too soft while bamboo older than 5 years is too fragile.

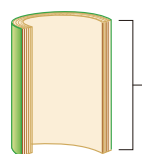
4 to 5 year old bamboo is the most durable bamboo to use.

Cutting period is limited to winter.

Bamboo in winter has less moisture and the fiber is more compact.



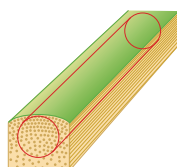
- We do not use bamboo nodes (joints) or the pieces, adjacent to nodes because those woody fibers are not straight enough.



- We use only those bamboo sections between nodes (internodes) that have adequate density.



- We cut and discard the bent portions, shoots and roots of bamboo trees.



- In order to make sure that materials do not shrink when they are dried, we use only the portion near the outer surface, where wood fiber texture is firm and tight.



Needle size (mm) Actual size

2.0 mm

2.25

2.5

2.75

3.0

3.25

3.5

3.75

4.0

4.5

5.0

5.5

6.0

6.5

7.0

8.0

9.0

10.0

Bamboo Knitting Needles Takumi®

Bamboo Circular Knitting Needles Takumi®

- The newly designed precision tips on **Takumi®** circular knitting needles accommodate the finest yarns and virtually any knitting technique.
- The newly designed connecting cords are smooth and soft, lying flat as you knit.
- The connection between the cord and the knitting needle are seamless allowing the smooth glide of yarn from one surface to the other.



3981-3998	
Bamboo Circular Knitting Needles Takumi® (120 cm)	
Packing	1 pc./pack 3 packs/box
Package Size	9 x 23 x 0.3 - 1.1 cm

3981	120 cm/2.00 mm
4 901316 839819	

3987	120 cm/3.50 mm
4 901316 839871	

3993	120 cm/6.00 mm
4 901316 839932	

3982	120 cm/2.25 mm
4 901316 839826	

3988	120 cm/3.75 mm
4 901316 839888	

3994	120 cm/6.50 mm
4 901316 839949	

3983	120 cm/2.50 mm
4 901316 839833	

3989	120 cm/4.00 mm
4 901316 839895	

3995	120 cm/7.00 mm
4 901316 839956	

3984	120 cm/2.75 mm
4 901316 839840	

3990	120 cm/4.50 mm
4 901316 839901	

3996	120 cm/8.00 mm
4 901316 839963	

3985	120 cm/3.00 mm
4 901316 839857	

3991	120 cm/5.00 mm
4 901316 839918	

3997	120 cm/9.00 mm
4 901316 839970	

3986	120 cm/3.25 mm
4 901316 839864	

3992	120 cm/5.50 mm
4 901316 839925	

3998	120 cm/10.00 mm
4 901316 839987	



Bamboo Knitting Needles Takumi®

Bamboo Circular Knitting Needles Takumi®



3951-3968

Bamboo Circular Knitting Needles
Takumi® (100 cm)

Packing	1 pc./pack 3 packs/box
Package Size	9 x 23 x 0.3 - 1.1 cm



3921-3938

Bamboo Circular Knitting Needles
Takumi® (80 cm)

Packing	1 pc./pack 3 packs/box
Package Size	9 x 23 x 0.3 - 1.1 cm

3951 100 cm/2.00 mm



3960 100 cm/4.50 mm



3921 80 cm/2.00 mm



3930 80 cm/4.50 mm



3952 100 cm/2.25 mm



3961 100 cm/5.00 mm



3922 80 cm/2.25 mm



3931 80 cm/5.00 mm



3953 100 cm/2.50 mm



3962 100 cm/5.50 mm



3923 80 cm/2.50 mm



3932 80 cm/5.50 mm



3954 100 cm/2.75 mm



3963 100 cm/6.00 mm



3924 80 cm/2.75 mm



3933 80 cm/6.00 mm



3955 100 cm/3.00 mm



3964 100 cm/6.50 mm



3925 80 cm/3.00 mm



3934 80 cm/6.50 mm



3956 100 cm/3.25 mm



3965 100 cm/7.00 mm



3926 80 cm/3.25 mm



3935 80 cm/7.00 mm



3957 100 cm/3.50 mm



3966 100 cm/8.00 mm



3927 80 cm/3.50 mm



3936 80 cm/8.00 mm



3958 100 cm/3.75 mm



3967 100 cm/9.00 mm



3928 80 cm/3.75 mm



3937 80 cm/9.00 mm



3959 100 cm/4.00 mm



3968 100 cm/10.00 mm



3929 80 cm/4.00 mm



3938 80 cm/10.00 mm



Bamboo Knitting Needles Takumi®

Bamboo Circular Knitting Needles Takumi®



3891-3908 Bamboo Circular Knitting Needles Takumi® (60 cm)

Packing	1 pc./pack 3 packs/box
Package Size	9 x 23 x 0.3 - 1.1 cm



3861-3878 Bamboo Circular Knitting Needles Takumi® (40 cm)

Packing	1 pc./pack 3 packs/box
Package Size	9 x 23 x 0.3 - 1.1 cm

3891 60 cm/2.00 mm  4 901316 838911	3900 60 cm/4.50 mm  4 901316 839000	3861 40 cm/2.00 mm  4 901316 838614	3870 40 cm/4.50 mm  4 901316 838706
3892 60 cm/2.25 mm  4 901316 838928	3901 60 cm/5.00 mm  4 901316 839017	3862 40 cm/2.25 mm  4 901316 838621	3871 40 cm/5.00 mm  4 901316 838713
3893 60 cm/2.50 mm  4 901316 838935	3902 60 cm/5.50 mm  4 901316 839024	3863 40 cm/2.50 mm  4 901316 838638	3872 40 cm/5.50 mm  4 901316 838720
3894 60 cm/2.75 mm  4 901316 838942	3903 60 cm/6.00 mm  4 901316 839031	3864 40 cm/2.75 mm  4 901316 838645	3873 40 cm/6.00 mm  4 901316 838737
3895 60 cm/3.00 mm  4 901316 838959	3904 60 cm/6.50 mm  4 901316 839048	3865 40 cm/3.00 mm  4 901316 838652	3874 40 cm/6.50 mm  4 901316 838744
3896 60 cm/3.25 mm  4 901316 838966	3905 60 cm/7.00 mm  4 901316 839055	3866 40 cm/3.25 mm  4 901316 838669	3875 40 cm/7.00 mm  4 901316 838751
3897 60 cm/3.50 mm  4 901316 838973	3906 60 cm/8.00 mm  4 901316 839062	3867 40 cm/3.50 mm  4 901316 838676	3876 40 cm/8.00 mm  4 901316 838768
3898 60 cm/3.75 mm  4 901316 838980	3907 60 cm/9.00 mm  4 901316 839079	3868 40 cm/3.75 mm  4 901316 838683	3877 40 cm/9.00 mm  4 901316 838775
3899 60 cm/4.00 mm  4 901316 838997	3908 60 cm/10.00 mm  4 901316 839086	3869 40 cm/4.00 mm  4 901316 838690	3878 40 cm/10.00 mm  4 901316 838782



Bamboo Knitting Needles Takumi®

Bamboo Knitting Needles Takumi® Double Pointed



3791-3804	
Bamboo Knitting Needles Takumi® Double Pointed (12.5 cm)	
Packing	5 pcs./pack 3 packs/box
Package Size	4.5 x 18 x 0.3 - 0.7 cm



3811-3824	
Bamboo Knitting Needles Takumi® Double Pointed (16 cm)	
Packing	5 pcs./pack 3 packs/box
Package Size	4.5 x 21 x 0.3 - 0.7 cm



Bamboo Knitting Needles Takumi®

Bamboo Knitting Needles Takumi® Double Pointed



3831-3848	
Bamboo Knitting Needles Takumi® Double Pointed (20 cm)	
Packing	5 pcs./pack 3 packs/box
Package Size	
2.0 - 6.5 mm	4.5 x 25.5 x 0.3 - 0.7 cm
7.0 - 10.0 mm	4.5 x 25.8 x 0.8 - 1.1 cm



3831 2.00 mm 4 901316 838317	3837 3.50 mm 4 901316 838379	3843 6.00 mm 4 901316 838430
3832 2.25 mm 4 901316 838324	3838 3.75 mm 4 901316 838386	3844 6.50 mm 4 901316 838447
3833 2.50 mm 4 901316 838331	3839 4.00 mm 4 901316 838393	3845 7.00 mm 4 901316 838454
3834 2.75 mm 4 901316 838348	3840 4.50 mm 4 901316 838409	3846 8.00 mm 4 901316 838461
3835 3.00 mm 4 901316 838355	3841 5.00 mm 4 901316 838416	3847 9.00 mm 4 901316 838478
3836 3.25 mm 4 901316 838362	3842 5.50 mm 4 901316 838423	3848 10.00 mm 4 901316 838485



Bamboo Knitting Needles Takumi®

Bamboo Knitting Needles Takumi® Single Pointed



3765-3778

Bamboo Knitting Needles Takumi®
Single Pointed (40 cm)

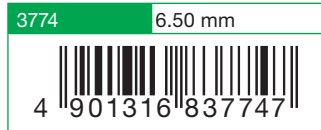
Packing	2 pcs./pack 3 packs/box
Package Size	
3.0 - 6.5 mm	5.5 x 47 x 1.0 - 1.2 cm
7.0 - 10.0 mm	6 x 47 x 1.4 - 1.6 cm



3731-3748

Bamboo Knitting Needles Takumi®
Single Pointed (33 / 35 cm)

Packing	2 pcs./pack 3 packs/box
Package Size	
2.0 - 6.5 mm	4.5 x 39 x 1.0 - 1.2 cm
7.0 - 10.0 mm	5 x 41.5 x 1.4 - 1.5 cm



Bamboo Knitting Needles Takumi®

Bamboo Knitting Needles Takumi® Single Pointed



3701-3718	
Bamboo Knitting Needles Takumi® Single Pointed (23 cm)	
Packing	2 pcs./pack 3 packs/box
Package Size	
2.0 - 6.5 mm	4.5 x 29 x 1.0 - 1.2 cm
7.0 - 10.0 mm	5 x 29 x 1.4 - 1.5 cm

3701 2.00 mm 4 901316 837013	3707 3.50 mm 4 901316 837075	3713 6.00 mm 4 901316 837136
3702 2.25 mm 4 901316 837020	3708 3.75 mm 4 901316 837082	3714 6.50 mm 4 901316 837143
3703 2.50 mm 4 901316 837037	3709 4.00 mm 4 901316 837099	3715 7.00 mm 4 901316 837150
3704 2.75 mm 4 901316 837044	3710 4.50 mm 4 901316 837105	3716 8.00 mm 4 901316 837167
3705 3.00 mm 4 901316 837051	3711 5.00 mm 4 901316 837112	3717 9.00 mm 4 901316 837174
3706 3.25 mm 4 901316 837068	3712 5.50 mm 4 901316 837129	3718 10.00 mm 4 901316 837181



Bamboo Knitting Needles Takumi®

Bamboo Circular Knitting Needles "Takumi®"



3016/100/3.0-10.0

Bamboo Circular Knitting
Needles "Takumi®" 100 cm

Packing	1 pc./pack
3.0 - 6.5 mm	10 packs/box
7.0 - 10.0 mm	5 packs/box
Package Size	
3.0 - 6.5 mm	20 x 7.5 x 0.3 - 0.8 cm
7.0 - 10.0 mm	20 x 7.5 x 0.8 - 1.2 cm



3016/80/3.0-10.0

Bamboo Circular Knitting
Needles "Takumi®" 80 cm

Packing	1 pc./pack
3.0 - 6.0 mm	10 packs/box
6.5 - 10.0 mm	5 packs/box
Package Size	
3.0 - 6.5 mm	20 x 7.5 x 0.3 - 0.8 cm
7.0 - 10.0 mm	20 x 7.5 x 0.8 - 1.2 cm



Bamboo Knitting Needles Takumi®

Bamboo Circular Knitting Needles "Takumi"®



3016/60/3.0-6.0	
Bamboo Circular Knitting Needles "Takumi"® 60 cm	
Packing	1 pc./pack 10 packs/box
Package Size	20 × 7.5 × 0.8 cm



3016/40/3.0-6.0	
Bamboo Circular Knitting Needles "Takumi"® 40 cm	
Packing	1 pc./pack 10 packs/box
Package Size	20 × 7.5 × 0.8 cm

3016/60/3.0	60 cm/3.0 mm
4 901316 849962	

3016/60/4.5	60 cm/4.5 mm
4 901316 850012	

3016/40/3.0	40 cm/3.0 mm
4 901316 848965	

3016/40/4.5	40 cm/4.5 mm
4 901316 849016	

3016/60/3.25	60 cm/3.25 mm
4 901316 849979	

3016/60/5.0	60 cm/5.0 mm
4 901316 850029	

3016/40/3.25	40 cm/3.25 mm
4 901316 848972	

3016/40/5.0	40 cm/5.0 mm
4 901316 849023	

3016/60/3.5	60 cm/3.5 mm
4 901316 849986	

3016/60/5.5	60 cm/5.5 mm
4 901316 850036	

3016/40/3.5	40 cm/3.5 mm
4 901316 848989	

3016/40/5.5	40 cm/5.5 mm
4 901316 849030	

3016/60/3.75	60 cm/3.75 mm
4 901316 849993	

3016/60/6.0	60 cm/6.0 mm
4 901316 850043	

3016/40/3.75	40 cm/3.75 mm
4 901316 848996	

3016/40/6.0	40 cm/6.0 mm
4 901316 849047	

3016/60/4.0	60 cm/4.0 mm
4 901316 850005	

3016/40/4.0	40 cm/4.0 mm
4 901316 849009	



Bamboo Knitting Needles Takumi®

Bamboo Knitting Needles "Takumi®" Double Pointed



3014/2.0-6.0	
Bamboo Knitting Needles "Takumi®" Double Pointed 16 cm	

Packing	5 pcs./pack 10 packs/box
Package Size	20.5 × 3.8 × 0.6 cm



3015/2.0-6.0	
Bamboo Knitting Needles "Takumi®" Double Pointed 20 cm	

Packing	5 pcs./pack 10 packs/box
Package Size	25.5 × 3.8 × 0.6 cm

3014/2.0	2.0 mm
 4 901316 811013	

3014/4.0	4.0 mm
 4 901316 811051	

3015/2.0	2.0 mm
 4 901316 812003	

3015/3.75	3.75 mm
 4 901316 812140	

3014/2.25	2.25 mm
 4 901316 811105	

3014/4.5	4.5 mm
 4 901316 811068	

3015/2.25	2.25 mm
 4 901316 812119	

3015/4.0	4.0 mm
 4 901316 812065	

3014/2.75	2.75 mm
 4 901316 811112	

3014/5.0	5.0 mm
 4 901316 811075	

3015/2.5	2.5 mm
 4 901316 812010	

3015/4.5	4.5 mm
 4 901316 812072	

3014/3.0	3.0 mm
 4 901316 811037	

3014/5.5	5.5 mm
 4 901316 811082	

3015/2.75	2.75 mm
 4 901316 812126	

3015/5.0	5.0 mm
 4 901316 812089	

3014/3.25	3.25 mm
 4 901316 811129	

3014/6.0	6.0 mm
 4 901316 811099	

3015/3.0	3.0 mm
 4 901316 812027	

3015/5.5	5.5 mm
 4 901316 812096	

3014/3.5	3.5 mm
 4 901316 811044	

3015/3.25	3.25 mm
 4 901316 812133	

3015/6.0	6.0 mm
 4 901316 812102	

3014/3.75	3.75 mm
 4 901316 811136	

3015/3.5	3.5 mm
 4 901316 812041	

Bamboo Knitting Needles Takumi®

Bamboo Knitting Needles "Takumi®" Single Pointed



3011/2.0-6.0	
Bamboo Knitting Needles "Takumi®" Single Pointed 23 cm	
Packing	2 pcs./pack 10 packs/box
Package Size	29 × 3.8 × 1.2 cm



3012/2.0-10.0	
Bamboo Knitting Needles "Takumi®" Single Pointed 33 cm/35 cm	
Packing	2 pcs./pack 10 packs/box/5 packs/box
2.0 - 6.5 mm/7.0 - 10.0 mm	
Package Size 2.0 - 6.5 mm	39 × 3.8 × 1.2 cm
Package Size 7.0 - 10.0 mm	41 × 5 × 1.6 cm

3011/2.0	2.0 mm
4 901316 802202	

3011/3.75	3.75 mm
4 901316 802325	

3012/2.0	2.0 mm
4 901316 802516	

3012/4.5	4.5 mm
4 901316 802585	

3011/2.25	2.25 mm
4 901316 802295	

3011/4.0	4.0 mm
4 901316 802240	

3012/2.25	2.25 mm
4 901316 802486	

3012/5.0	5.0 mm
4 901316 802592	

3011/2.5	2.5 mm
4 901316 802219	

3011/4.5	4.5 mm
4 901316 802257	

3012/2.5	2.5 mm
4 901316 802523	

3012/5.5	5.5 mm
4 901316 802608	

3011/2.75	2.75 mm
4 901316 802301	

3011/5.0	5.0 mm
4 901316 802264	

3012/2.75	2.75 mm
4 901316 802493	

3012/6.0	6.0 mm
4 901316 802615	

3011/3.0	3.0 mm
4 901316 802226	

3011/5.5	5.5 mm
4 901316 802271	

3012/3.0	3.0 mm
4 901316 802530	

3012/6.5	6.5 mm
4 901316 802660	

3011/3.25	3.25 mm
4 901316 802318	

3011/6.0	6.0 mm
4 901316 802288	

3012/3.25	3.25 mm
4 901316 802547	

3012/7.0	7.0 mm
4 901316 802622	

3011/3.5	3.5 mm
4 901316 802233	

3012/3.5	3.5 mm
4 901316 802554	

3012/8.0	8.0 mm
4 901316 802639	

3012/3.75	3.75 mm
4 901316 802561	

3012/9.0	9.0 mm
4 901316 802646	

3012/4.0	4.0 mm
4 901316 802578	

3012/10.0	10.0 mm
4 901316 802653	

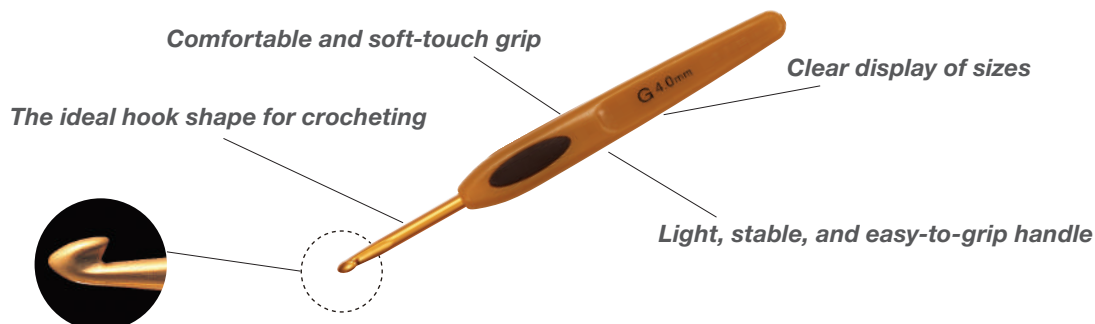


Crochet Hooks

Soft Touch Crochet Hooks

The sophisticated design gives you the best crocheting experience

With these easy, soft-touch grips, your hands won't feel fatigue after long hours of crocheting.



1001-1010 Soft Touch Crochet Hook	
1 pc./pack	3 packs/box
Package Size	19 x 4 x 1.0 cm
1001 2.0 mm	0 51221 11451 9
1002 2.25 mm	0 51221 11452 6
1030 2.5 mm	0 51221 11453 3
1003 2.75 mm	0 51221 11410 6
1031 3.0 mm	0 51221 11454 0
1004 3.25 mm	0 51221 11411 3
1005 3.5 mm	0 51221 11412 0
1006 3.75 mm	0 51221 11413 7
1007 4.0 mm	0 51221 11414 4
1032 4.5 mm	0 51221 11455 7
1008 5.0 mm	0 51221 11415 1
1009 5.5 mm	0 51221 11416 8
1010 6.0 mm	0 51221 11417 5



1020-1027 Soft Touch Crochet Hook	
1 pc./pack	3 packs/box
Package Size	19 x 4 x 1.0 cm
1020 1.75 mm	0 51221 11430 4
1021 1.50 mm	0 51221 11431 1
1022 1.25 mm	0 51221 11432 8
1023 1.00 mm	0 51221 11433 5
1024 0.90 mm	0 51221 11434 2
1025 0.75 mm	0 51221 11435 9
1026 0.60 mm	0 51221 11436 6
1027 0.50 mm	0 51221 11437 3

Crochet Hooks

Amour Crochet Hooks

Amour crochet hooks are so comfortable to use that you won't want to stop.

With a soft, ergonomic handle and an ultra-smooth hook and shaft, crochet is always smooth and even.



Why Amour crochet hooks are the best choice:

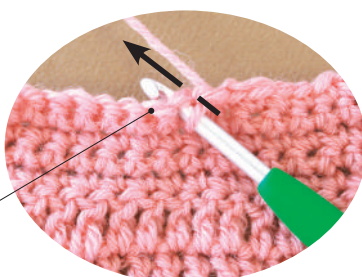
Carefully designed hook

Easy to pull the yarn through the stitches and the stitches stay on the hook

Stitches don't slip off the hook making it easy to pick up stitches and pull the yarn through the stitches.

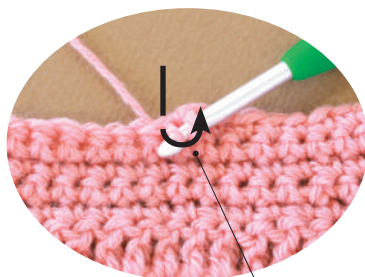
It is designed to make basic crocheting smooth and accurate.

<When picking up stitches>

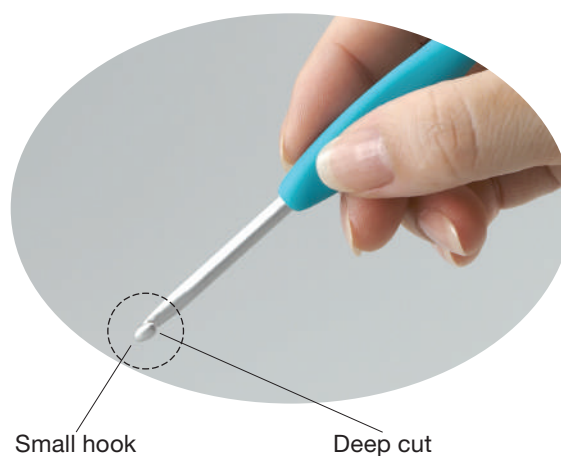


The small hook passes through the stitches easily

<When pulling the yarn through the stitches>



The deep hook holds the yarn securely



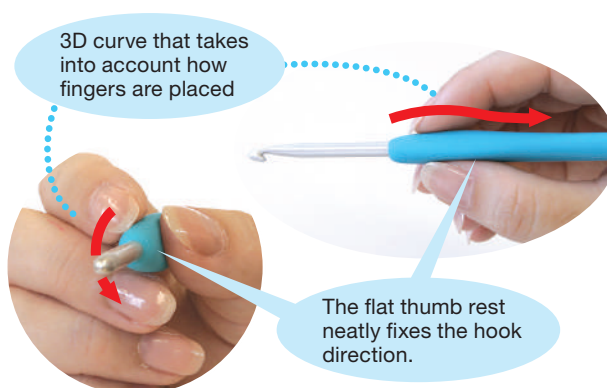
Small hook

Deep cut

Hand-friendly grip

3D design achieves an easy grip

Grips with a 3D curve fit your fingertips comfortably. These perfectly fitting handles require no extra power, allowing you to knit tirelessly.



3D curve that takes into account how fingers are placed

The flat thumb rest neatly fixes the hook direction.

Soft and nonslip material

The entire grip is made of nonslip material to serve many different crocheting styles. It has a comfortable and soft touch.

Crochet Hooks



1050-1049	
Amour Crochet Hook	
1 pc./pack	3 packs/box
Package Size	20 × 4.1 × 1.2 cm
1050	
2.0 mm	0 51221 71050 6
1051	
2.5 mm	0 51221 71051 3
1052	
3.0 mm	0 51221 71052 0
1043	
3.5 mm	0 51221 71043 8
1045	
4.0 mm	0 51221 71045 2
1046	
4.5 mm	0 51221 71046 9
1047	
5.0 mm	0 51221 71047 6
1048	
5.5 mm	0 51221 71048 3
1049	
6.0 mm	0 51221 71049 0

1053-1059	
Amour Crochet Hook	
1053	
6.5 mm	0 51221 71053 7
1054	
7.0 mm	0 51221 71054 4
1055	
8.0 mm	0 51221 71055 1
1056	
9.0 mm	0 51221 71056 8
1057	
10.0 mm	0 51221 71057 5
1 pc./pack	3 packs/box
Package Size	22 × 4.5 × 1.6 cm
1058	
12.0 mm	0 51221 71058 2
1059	
15.0 mm	0 51221 71059 9
1 pc./pack	3 packs/box
Package Size	22 × 5.2 × 2.3 cm

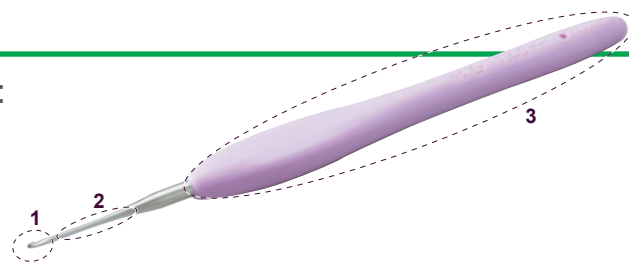
3674	
Amour Crochet Hook Set	
1 set/box	
Package Size	19 × 11 × 2.5 cm

Crochet Hooks

Why Amour crochet hooks are the best choice:

1. Easy-to-Use Crochet Hook

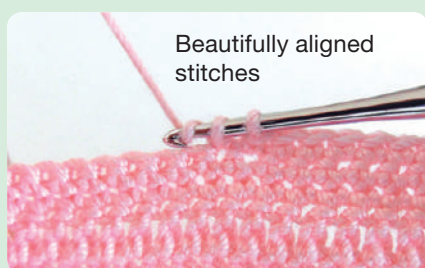
The hook is designed to prevent thread from slipping, and making picking up and pulling through of stitches easier.



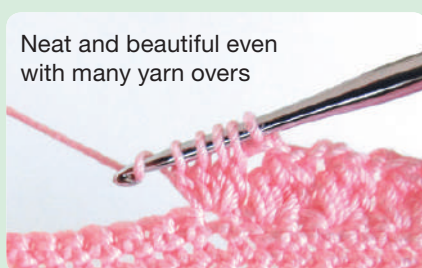
3. Soft, non-slip material is easy to grip reducing hand fatigue.

The three-dimensional curves on the grip fit your fingertips naturally. This naturally fitting design prevents you from gripping the needle unnecessarily tightly, stopping your hand from getting tired easily.

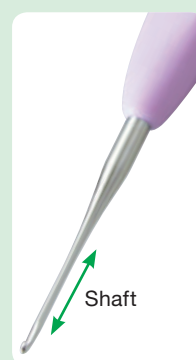
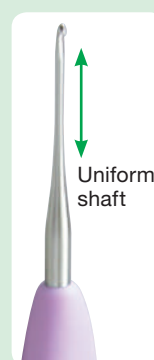
2. Beautiful even stitches because of long, uniform diameter shafts.



Uniform thickness of the wider part of the shaft will keep the stitches neatly aligned.



Stitches with many yarn overs can be made beautifully as well.



1220-1226	
Amour Crochet Hook	
1 pc./pack	3 packs/box
Package Size	20 x 4.1 x 1.2 cm
1220	
1.75 mm	0 51221 71220 3
1221	
1.50 mm	0 51221 71221 0
1222	
1.25 mm	0 51221 71222 7
1223	
1.00 mm	0 51221 71223 4
1224	
0.90 mm	0 51221 71224 1
1225	
0.75 mm	0 51221 71225 8
1226	
0.60 mm	0 51221 71226 5
3675	
Amour Crochet Hook Set	
1 set/box	
Package Size	19 x 10 x 2.6 cm



1220



1221



1222



1223



1224



1225



1226



3675

Crochet Hooks



1305/G -1308/J	
Double Ended Tunisian Crochet Hook	
1 pc./pack	3 packs/box
Package Size	21 x 6.5 x 0.3 - 0.6 cm
1305/G	
4.0 mm	0 51221 11805 0
1306/H	
5.0 mm	0 51221 11806 7
1307/I	
5.5 mm	0 51221 11807 4
1308/J	
6.0 mm	0 51221 11808 1



Fun & Fast, Crocheting in the Round!

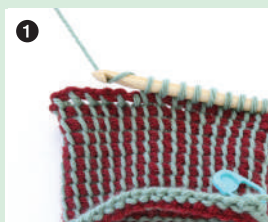
Simply work in the round using the 2 hooks and alternating the 2 yarns.

• Example of circular knitting

Simply work in rounds in a spiral using the two hooks and alternating the two yarns. It's easy to use and you can knit non-stop.



Use two yarns and knit alternatively. The crocheted fabric is circular.

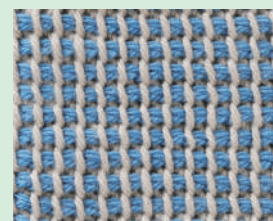


Pick up the stitch (the warp yarn of the preceding row or the back bump of chain stitch) with the left hook.



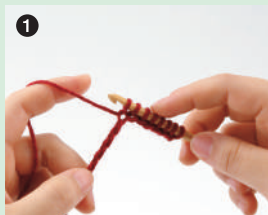
Use the right hook to stitch the other yarn and continue.

Enjoy different designs by combining yarns of different colours.



Plain Tunisian stitch

• Example of flat knitting



Pick up the stitch (the warp yarn of the preceding row or the back bump of chain stitch) with the left hook.



Pull up the yarn through the stitches from the left to the right.

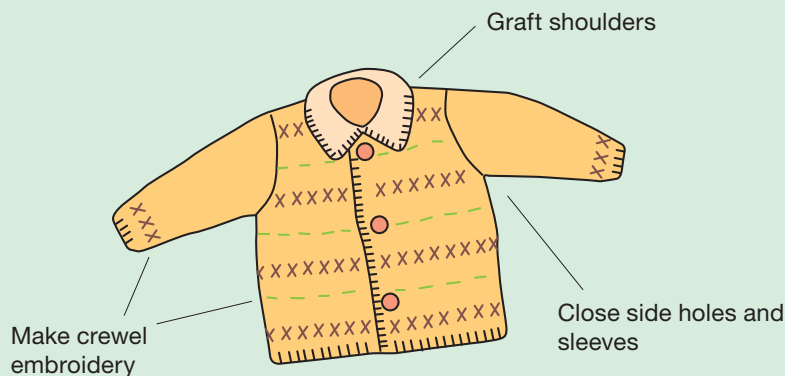


Repeat 1 and 2.

Knitting Accessories

"To Finish"

Darning needles are essential for hand-knitting, including darning and grafting. Yarn-friendly darning needles that prevent yarns from splitting with their rounded tips.



339 Darning Needle Set



3 needles/pack	3 packs/box
Package Size	16 × 5.5 × 2 cm

A darning needle set in a cute knitting needle shaped case.
Needle sizes:
No. 13, 17, 20



340 Jumbo Darning Needle Set



2 needles/pack	3 packs/box
Package Size	16 × 5.5 × 2 cm

A darning needle set in a cute knitting needle shaped case.
Needle size: ø2.50 × 70.0 mm



3121 Darning Needle Set (Bent tip)



3 needles/pack	3 packs/box
Package Size	16 × 5.5 × 2 cm

A darning needle set in a cute knitting needle shaped case.
Needle sizes:
No. 15(2 pcs.), No. 17(1 pc.)

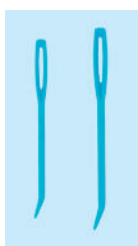
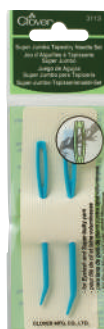


3168 Lace Darning Needle Set



3 pcs./pack	3 packs/box
Package Size	16 × 5.5 × 2 cm

Easy and convenient carrying case with a screw on cap stores needles neatly.
Needle sizes:
No. 20, 22 (Bent tip) / No. 24

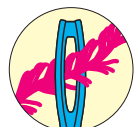


3113 Super Jumbo Tapestry Needle Set



2 needles/pack	3 packs/box
Package Size	15.5 × 5 × 0.5 cm

Large eye makes for easy threading of long-pile or extremely thick woolen yarn.
The tip of the needle is slightly curved, making it easier to pick up stitches.

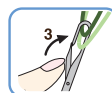
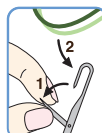


3160 Darning Needles with Latch Hook Eye



2 needles/pack	3 packs/box
Package Size	13 × 6.5 × 0.3 cm

Hook allows for easy threading of multi-ply and bulky yarns.

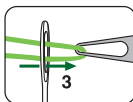
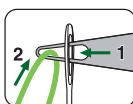


Knitting Accessories

Threader made specially for knitting yarn

Thread darning needles easily.

This plate-like solid threader with a large hole is very convenient when using threads that are difficult to thread, such as hard-twist lace thread and fancy yarn.



3142

Clover Yarn Threader



1 pc./pack

3 packs/box

Package Size

13 x 6.5 x 1 cm

Thread yarns easily!



3114

Antique Yarn Threader



1 pc./pack

3 packs/box

Package Size

13 x 6.5 x 0.5 cm

Antique designed threader for yarn and cotton lace.

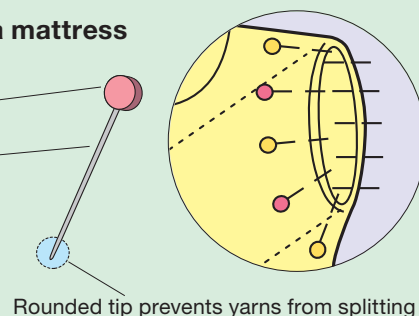
Hold fabrics temporarily with marking pins before finishing with a mattress stitch or by grafting.

Large head keeps the pin in place

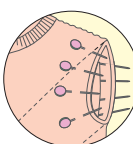
Long shaft makes it easy for you to pin thick fabrics

Pin and hold fabrics before closing side holes, grafting shoulder parts and connecting sleeves.

Use special marking pins for knitting which are long and have a rounded tip.



Rounded tip prevents yarns from splitting



325

Marking Pins for Knitting



10 pins/pack

3 packs/box

Package Size

13 x 7.5 x 0.9 cm

Marking pins with a blunt tip will not split yarns.



3143

Bamboo Marking Pins



10 pins/pack

3 packs/box

Package Size

19 x 7 x 1 cm

Long marking pin for thick knitted fabrics.

Length: Approx. 7 cm

Pins made from the same materials as the Bamboo Knitting Needles "Takumi".



3163

Fork Blocking Pins



40 pins./pack

3 packs/box

Package Size

13 x 7.5 x 1.6 cm

U-Pin for secure pinning and easy removal.

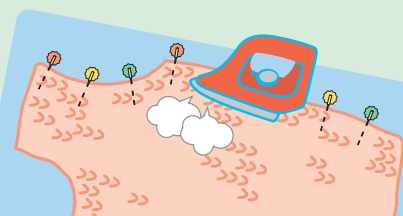


Iron smoothly with fork-shared curved pins.

Finish knitted garments and sleeves by ironing

Place and pin the knitted fabric on an ironing board and steam. Leave some space (2-3 cm) between the iron and the fabric while steaming.

Stitches and rounded edges will have a neat and beautiful finish.



Knitting Accessories

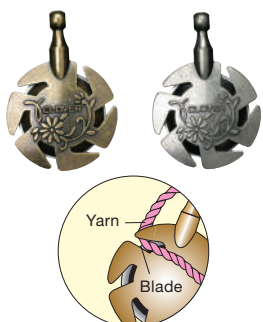


3105
Yarn Cutter Pendant (Antique Gold)

3106
Yarn Cutter Pendant (Antique Silver)

1 pc./pack	3 packs/box
Package Size	13 × 6.5 × 0.8 cm

Yarn can be cut using any of the grooves.
Rotary cutting blade is integrated with pendant, making it safe to use.



348
Yarn Guide

1 pc./pack	3 packs/box
Package Size	13 × 5.5 × 2 cm

A convenient ring type yarn guide.



328
Knitting Register

1 pc./pack	3 packs/box
Package Size	13 × 5 × 1.5 cm

A convenient register that can be inserted onto a straight knitting needle.



3118
Mini Knitting Counter

1 pc./pack	3 packs/box
Package Size	16 × 7 × 1 cm

Track the number of knitted stitches and rows.
Pendant style counter.



336
Knitting Counter

1 pc./pack	3 packs/box
Package Size	13 × 6.5 × 1.5 cm

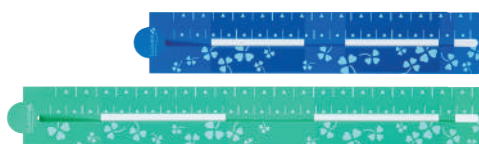
Track the number of knitted stitches and rows with a push of a button.



3164
Pattern Chart Marker Set

1 set/pack	3 packs/box
Package Size	36.5 × 11.6 × 0.25 cm

- Slip the Pattern Chart Marker onto the chart and hold in place with the attached magnet. Chart Marker moves easily to the next row as you work your pattern.
- You can use it as a book-mark for books or magazines.



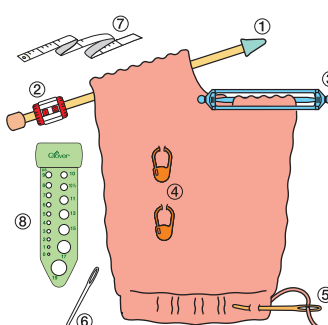
3003
Knitting Accessory Set

1 set/pack	3 packs/box
Package Size	21 × 11 × 1.5 cm

Basic knitting tools in handy compact case.



- Set contains:
- ① Point Protectors (Large): 2 pcs.
 - ② Point Protectors (Small): 2 pcs.
 - ③ Knitting Register: 1 pc.
 - ④ Double-Ended Stitch Holders (Small): 2 pcs.
 - ⑤ Locking Stitch Makers: 20 pcs.
 - ⑥ Jumbo Tapestry Needle: 1 pc.
 - ⑦ Tapestry Needle (No. 17): 1 pc.
 - ⑧ Tape Measure (1.5 m): 1 pc.
 - ⑨ Knitting Needle Gauge: 1 pc.

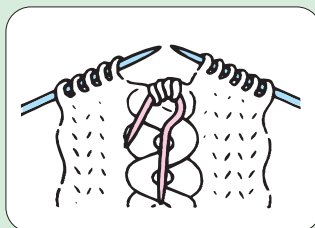


Knitting Accessories

Knit patterns

Aran sweaters with many cable and cross stitches, and Fair Isle sweaters with braids using two yarns are excellent in both design and heat-retention.

Try our convenient tools!



For Aran patterns and other cross stitches



341

Cable Stitch Holders (U-Shaped)

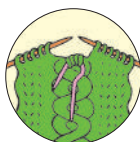


3 pcs./pack

3 packs/box

Package Size

16 × 5 × 1 cm



Designed to hold stitches at the U-shaped area. For regular size yarns.



3008

Jumbo Cable Stitch Holder Set "U"

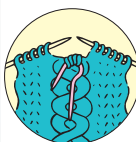


2 pcs./pack

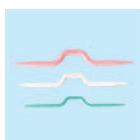
3 packs/box

Package Size

16.5 × 5.5 × 1.3 cm



Cable Stitch Holder for ultra thick yarns.
U-shaped design prevents stitches from dropping.
Small: 8 - 10 mm
Large: 10 - 15 mm



330

Cable Stitch Holders



3 pcs./pack

3 packs/box

Package Size

12.2 × 6.5 × 1 cm



Standard type for smooth knitting.
Content: Large, Medium, Small 1 each.

Knit braid patterns

Convenient for braiding with multiple colours.



Keep yarns at the dent to prevent them from coming loose.



332

Knitting Bobbin Set



6 pcs./pack

3 packs/box

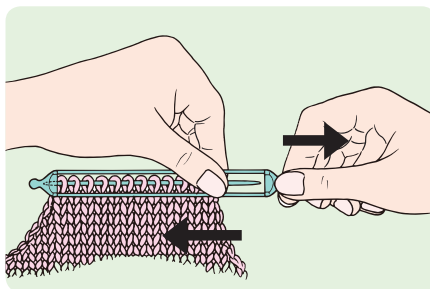
Package Size

13 × 6.5 × 1 cm

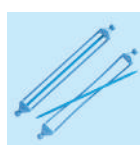
Convenient for knitting with multi-coloured yarns.

Knitting Accessories

To transfer stitches onto the Double-Ended Stitch Holder, remove either end cap of the elastic band from the double-point needle, slip stitches onto the Holder, then replace the end cap.



Position the cap so that it won't get in the way while grafting (for large and jumbo sized needles).



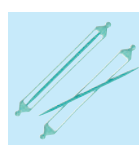
Length:
13.3 cm

351 Double-Ended Stitch Holder (Small)



2 pcs./pack	3 packs/box
Package Size	19.5 × 5 × 0.5 cm

Needle size: 2.75 - 4.5 mm



Length:
13.3 cm

3006 Double-Ended Stitch Holder (Medium)



2 pcs./pack	3 packs/box
Package Size	19.7 × 5 × 0.9 cm

Needle size: 3.75 - 8.0 mm



Length:
16.5 cm

352 Double-Ended Stitch Holder (Large)



2 pcs./pack	3 packs/box
Package Size	19.5 × 5 × 0.5 cm

Needle size: 3.75 - 8.0 mm

The extended length is suitable for works with many stitches.

Stitch holder with soft, pliable cord is a convenient way to store your circular work. Keeps the shape without compromising the stitches. Length of cord is adjustable depending on the number of stitches to be held.



3161 Circular Stitch Holder (Short)



1 pc./pack	3 packs/box
Package Size	13 × 10 × 1.2 cm

For Circular Knitting Needles:
23 - 41 cm



3162 Circular Stitch Holder (Long)



1 pc./pack	3 packs/box
Package Size	13 × 10 × 1.2 cm

For Circular Knitting Needles:
61 - 91 cm

Knitting Accessories

For repairing and correcting stitches

“Repair Hook” for fixing incorrect knitted stitches

- Made with “Takumi” quality bamboo

Quickly repair with a smoothly finished surface.

Sharp needle tips that easily undo stitches

3.5 mm

4.5 mm

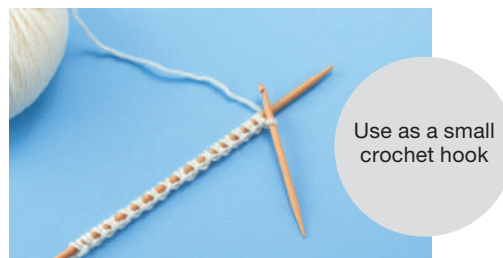
Bamboo will prevent the hook from slipping down, even if you accidentally let go of it.

This set contains hooks of two different sizes to serve a variety of situations.

Sharp hook tips that easily pass through stitches

- Compact and convenient

- For cast-on stitches and pick-up stitches



Use as a small crochet hook

- For detangling yarns such as mohair



It's easier if you untangle yarn using the needle tip

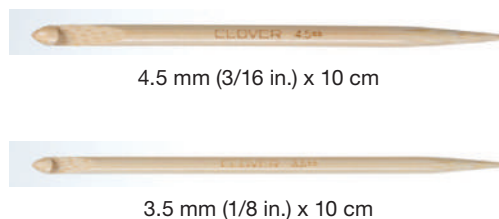


3009

Bamboo Knitting Repair Hooks

0 51221 73009 2

2 pcs./pack	3 packs/box
Package Size	16 x 8 x 1 cm



Handy hooks for repairing incorrect stitches.

Use the sharp point end to unravel stitches as needed and the hook end to pick up new stitches.



3147

Knitting Needle Gauge

0 51221 35314 7

1 pc./pack	3 packs/box
Package Size	13 x 10 x 0.2 cm

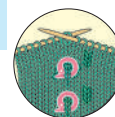
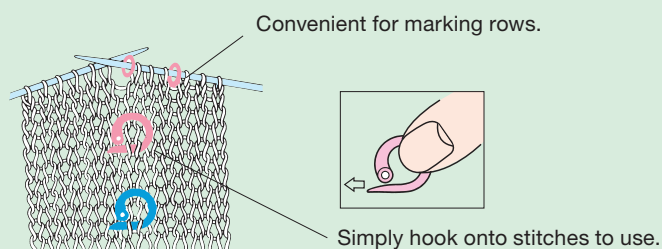
Measures 20 needles sizes.
Needle size: 2.0 - 15.0 mm



Knitting Accessories

Knit with markings

Are you counting stitches and rows over and over again? Count no more by simply placing these markers every 10-20 rows or where you have increased or decreased stitches. Then place stitch ring markers at the beginning of patterns for a smooth knitting experience.



347

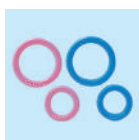
Split Ring Markers



24 pcs./pack	3 packs/box
Package Size	13 x 6.5 x 0.8 cm

Securely locks onto knitted stitches. One-touch action for placement and removal.

The round plastic rings in two sizes are slipped on the needles to mark the beginning and ending of pattern stitches, increasing, decreasing on the garment.

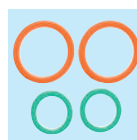
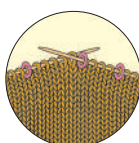


329 Stitch Ring Markers



10 small, 20 large rings/pack	3 packs/box
Package Size	13 x 6.5 x 0.8 cm

Small for needle size: 2.0 - 4.0 mm
Large for needle size: 4.0 - 6.5 mm

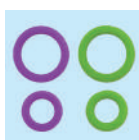


354 Jumbo Stitch Ring Markers



10 small, 10 large rings/pack	3 packs/box
Package Size	13 x 6.5 x 0.5 cm

A thin ring marker for uniform knitting. Small for needle size: 8.0 - 10.0 mm
Large for needle size: 12.75 - 19.0 mm

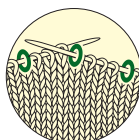


3107 Soft Stitch Ring Markers



10 small, 20 large rings/pack	3 packs/box
Package Size	13 x 6.5 x 0.5 cm

Small for needle size: 2.0 - 3.75 mm
Large for needle size: 3.75 - 8.0 mm

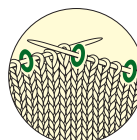


3108 Soft Jumbo Stitch Ring Markers



10 small, 20 large rings/pack	3 packs/box
Package Size	13 x 6.5 x 0.5 cm

Small for needle size: 8.0 - 10.0 mm
Large for needle size: 12.75 - 19.0 mm



The Stitch Markers Triangle have a specific triangle shape that allows the knitting needle tips to slip in easily when passing the markers from one needle to another.



3148 Stitch Markers Triangle (XS)



24 pcs./pack	3 packs/box
Package Size	13 x 6.5 x 0.3 cm

Needle size: 2.0 - 3.5 mm



3149 Stitch Markers Triangle (Small)



16 pcs./pack	3 packs/box
Package Size	13 x 6.5 x 0.5 cm

Needle size: 3.75 - 5.0 mm



3150 Stitch Markers Triangle (Medium)



16 pcs./pack	3 packs/box
Package Size	13 x 6.5 x 0.5 cm

Needle size: 5.5 - 6.5 mm



Knitting Accessories

Quick Locking Stitch Markers

Lock-type stitch marker.

It can also be used in the unlocked position.

Its undulated design prevents stretching of knitted stitches.



The small size is perfect for fine stitching on socks and laces.



The medium size is ideal for a wide range of projects including accessories and clothes.



The large size is suitable for Cowichan and fancy yarns in which medium-sized markers might be buried.

3030

Quick Locking Stitch Markers (Small)



20 pcs./pack

3 packs/box

Package Size

13 × 6.5 × 0.4 cm

3031

Quick Locking Stitch Markers (Medium)



20 pcs./pack

3 packs/box

Package Size

13 × 6.5 × 0.5 cm

3032

Quick Locking Stitch Markers (Large)



12 pcs./pack

3 packs/box

Package Size

13 × 6.5 × 0.6 cm

3033

Quick Locking Stitch Marker Set



1 set/pack

3 packs/box

Package Size

16 × 10 × 2.3 cm



Lock-type stitch marker.

It can also be used in the unlocked position.

Its undulated design prevents stretching of knitted stitches.

Handy compact case included.

Small: 10 pcs./Medium: 20 pcs./Large: 6 pcs.

3034

Knitting Accessory Set for Beginners



1 set/pack

3 packs/box

Package Size

16 × 10 × 2.3 cm



Basic accessories in handy compact case.

A convenient starter set with knitting accessories that you'll use frequently.

- Quick Locking Stitch Markers (10 pcs.)
- Soft Stitch Ring Markers (Small: 20 pcs. /Large: 20 pcs.)
For needle sizes Small: 2.0 mm – 3.75 mm
Large: 3.75 mm – 8.0 mm
- Point Protectors (2 pcs.)
For needle sizes: 3.75 mm – 6.5 mm

3035

Knitting Accessory Set for Socks



1 set/pack

3 packs/box

Package Size

16 × 10 × 2.3 cm



Useful basic accessories for sock knitting with case.

- Quick Locking Stitch Markers (10 pcs.)
- Soft Stitch Ring Markers (20 pcs.)
For needle sizes: 2.0 mm – 3.75 mm
- Double Pointed Needle Protectors (2 pcs.)
For needle sizes: 2.0 mm – 3.75 mm
- Darning needles: No. 20, 21



3165

Locking Stitch Markers with Clip



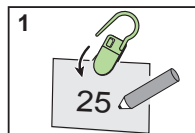
6 pcs./pack

3 packs/box

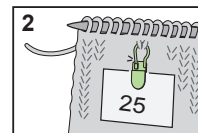
Package Size

16 × 8 × 0.6 cm

- You can attach notes to stitches!
- Perforated notepad included!



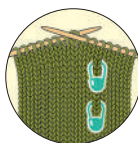
1. Write a note and clip it.



2. Attach to a stitch.

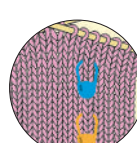
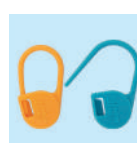
Knitting Accessories

Lock-type stitch marker that stays in place for worry-free knitting



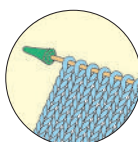
353 Locking Stitch Markers	
20 pcs./pack	3 packs/box
Package Size	13 x 6.5 x 0.8 cm

Locks onto knitted stitches for worry-free knitting.



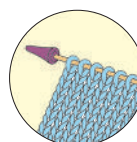
3109 Jumbo Locking Stitch Markers	
12 pcs./pack	3 packs/box
Package Size	13 x 6.5 x 0.8 cm

Perfect for super bulky yarn.



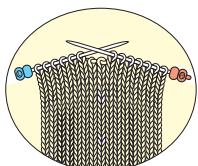
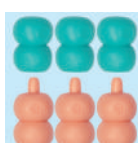
333/S Point Protectors (Small)	
4 pcs./pack	3 packs/box
Package Size	13 x 6.5 x 1.2 cm

A knitting needle cap to prevent knitted stitches from falling off. Needle size: 2.0 - 4.5 mm



333/L Point Protectors (Large)	
4 pcs./pack	3 packs/box
Package Size	13 x 6.5 x 1.5 cm

A knitting needle cap to prevent knitted stitches from falling off. Needle size: 3.75 - 6.5 mm



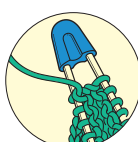
3140 Point Protectors and Stopper	
6 pcs./pack	3 packs/box
Package Size	13 x 6.5 x 1 cm

3 pairs of knitting needle caps to prevent stitches from falling off. Cap colours tell you which side of the fabric you are working on! Needle size: 2.0 - 6.5 mm



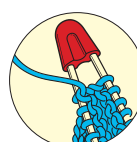
3141 Point Protectors Petit	
4 pcs./pack	3 packs/box
Package Size	13 x 6.5 x 1 cm

2 pairs of caps that prevents knitted stitches from slipping off. Light and easy to use! Needle size: 2.0 - 6.5 mm



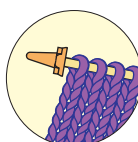
3004 Point Protector for Circular Knitting Needles (Small)	
4 pcs./pack	3 packs/box
Package Size	13 x 6.5 x 1 cm

Compactly stores without spreading needles. Needle size: 2.0 - 5.0 mm



3005 Point Protector for Circular Knitting Needles (Large)	
4 pcs./pack	3 packs/box
Package Size	13 x 6.5 x 1 cm

Compactly stores without spreading needles. Needle size: 5.0 - 10.0 mm



3110 Jumbo Point Protectors (Small)	
4 pcs./pack	3 packs/box
Package Size	13 x 7 x 2.5 cm

A knitting needle cap to prevent knitted stitches from falling off. Needle size: 8.0 - 10.0 mm

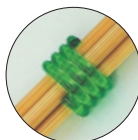


3112 Jumbo Point Protectors (Large)	
2 pcs./pack	3 packs/box
Package Size	13 x 7 x 2.8 cm

Prevents stitches from slipping off knitting needle. For needle sizes: 12.75 mm - 15.0 mm

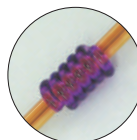
Knitting Accessories

Convenient for storing needles!



3122	
Coil Knitting Needle Holders (Large)	
3 pcs./pack	3 packs/box
Package Size	13 × 6.5 × 1.2 cm

Non-slip holder winds around knitting needles.
Needle size:
Single Pointed: 6.0 - 10.0 mm
Double Pointed: 4.5 - 6.5 mm



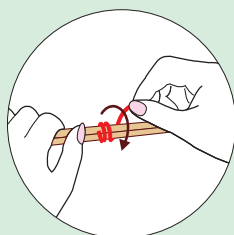
3123	
Coil Knitting Needle Holders (Small)	
5 pcs./pack	3 packs/box
Package Size	13 × 6.5 × 1 cm

Non-slip holder winds around knitting needles.
Needle size:
Single Pointed: 2.75 - 5.5 mm
Double Pointed: 2.0 - 4.0 mm

Convenient coil-style knitting needle holder

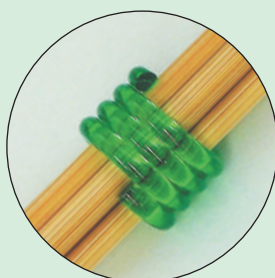
Perfect for storing and carrying around

Neatly bundle knitting needles and circular needles that are hard to organise.
Convenient for storing and carrying around.



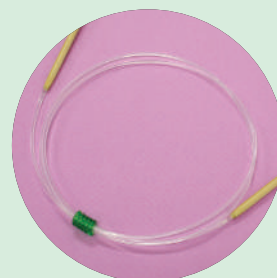
Bundle easy and tight

Simply wind the coil around needles to hold them together neatly without slipping.



Use different colours to distinguish between needles

Use a different colour depending on the needle size and length.



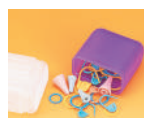
3615	
"GETAWAY" Knitting Needle Case (Single Pointed)	
1 pc./pack	3 packs/box
Package Size	38.5 × 13.5 × 1.4 cm



36 × 34 cm (open)



Size: 41 × 6 × 3.5 cm



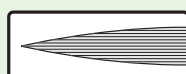
3120	
Knitting Needle Tube Case <Designer Case> Purple	
1 pc./pack	3 packs/box
Package Size	44 × 7.5 × 3.5 cm

Accommodate knitting needles up to 35 cm long. Knitting accessories can be stored in the bottom case.

Black Gold Needles

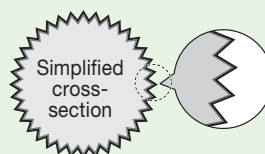


Professional-type polished needles with special black plating

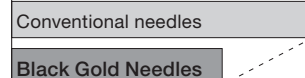


The surface is polished lengthwise.

The special black plating on the surface allows the needle to pierce effortlessly through fabric, enabling sewing with little resistance.



Major reduction in frictional resistance (Clover comparison)



(Comparison of average values)

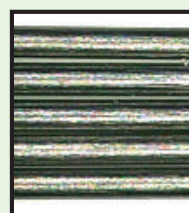
Outstanding rust resistance

The special black plating makes Clover needles highly rust-resistant, offering even better rust resistance than conventional nickel plating (Clover comparison).

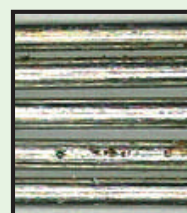
[Corrosion resistance test]

An endurance test that exposes needles to high-concentration salt water vapor under harsh environmental conditions to promote rust formation.

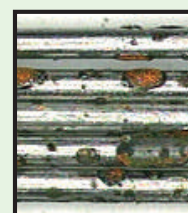
Black Gold Needles



Conventional needles

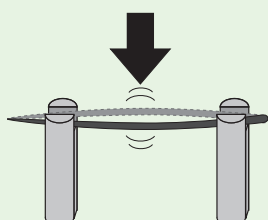


Polished finish*



*Unplated

Bend-resistant, break-resistant shaft



The needle shaft is strengthened by making it of carefully selected high-quality steel, quenched and tempered to maximise its material characteristics.

Designed for the optimum balance of hardness and elasticity.

To maintain standards compliance and quality, Clover carries out ongoing destructive testing by subjecting needles to loads.

Black Gold Needles

Quilting Between



6 needles/pack	3 packs/box
Package Size	15 x 5 x 0.3 cm

No. 9	0.53 x 27.0 mm
No. 10	0.46 x 25.4 mm
No. 12	0.53 x 24.4 mm

Quilting



6 needles/pack	3 packs/box
Package Size	15 x 5 x 0.3 cm

No. 9	0.56 x 27.3 mm
No. 10	0.56 x 25.8 mm
No. 12	0.51 x 22.7 mm

Appliqué/Sharps

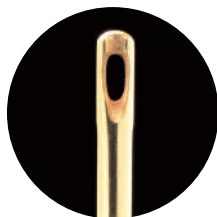


6 needles/pack	3 packs/box
Package Size	15 x 5 x 0.3 cm

No. 9	0.53 x 34.9 mm
No. 10	0.46 x 33.3 mm
No. 12	0.46 x 28.8 mm

Sewing, Quilting & Embroidery Needles

Superior Quality Clover Needles



- The needles will glide through fabric smoothly.
- The needle has Gold-Eye plating with a unique elliptical design for easy threading.
- The hardness of steel was obtained through high temperature treatment and tempering, making our needle hard to break or bend.
- Nickel plated for smooth sewing.
- Sharp needle point.



468/09
Quilting Needles
(No. 9)

0 51221 40105 3

468/10
Quilting Needles
(No. 10)

0 51221 40103 9

468/12
Quilting Needles
(No. 12)

0 51221 40101 5

15 needles/pack	12 packs/box
Package Size	13 x 5 x 0.5 cm

No. 9	0.56 x 27.3 mm
No. 10	0.56 x 25.8 mm
No. 12	0.51 x 22.7 mm



496/08
Gold Eye Quilting Needles
Between (No. 8)

0 51221 40332 3

496/09
Gold Eye Quilting Needles
Between (No. 9)

0 51221 40307 1

496/10
Gold Eye Quilting Needles
Between (No. 10)

0 51221 40308 8

496/12
Gold Eye Quilting Needles
Between (No. 12)

0 51221 40309 5

15 needles/pack	12 packs/box
Package Size	13 x 5 x 0.5 cm

No. 8	0.61 x 28.6 mm
No. 9	0.53 x 27.0 mm
No. 10	0.46 x 25.4 mm
No. 12	0.53 x 24.4 mm



497/09
Gold Eye Appliqué Needles
(No. 9)

0 51221 40321 7

497/10
Gold Eye Appliqué Needles
(No. 10)

0 51221 40322 4

497/12
Gold Eye Appliqué Needles
(No. 12)

0 51221 40323 1

15 needles/pack	12 packs/box
Package Size	13 x 5 x 0.5 cm

No. 9	0.53 x 34.9 mm
No. 10	0.46 x 33.3 mm
No. 12	0.46 x 28.8 mm

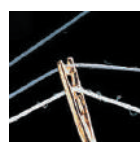


2006
Self Threading Needles
(Assorted)

0 51221 40707 9

5 needles/pack	12 packs/box
Package Size	10.4 x 5 x 0.5 cm

The needles have a built-in threader. Place thread in U-shaped groove and pull down to thread.



0.89 x 42.5 mm
0.76 x 38.0 mm
0.71 x 36.5 mm
0.64 x 42.5 mm
0.64 x 34.9 mm

Sewing, Quilting & Embroidery Needles



2007 Sashico Needles



8 needles/pack	12 packs/box
Package Size	10.4 x 4.5 x 0.5 cm

0.84 x 50.8 mm - 2 pcs.

0.99 x 44.5 mm - 2 pcs.

0.91 x 42.9 mm - 2 pcs.

0.89 x 34.9 mm - 2 pcs.



2009 Sashico Needles (Long Type)



3 needles/pack	12 packs/box
Package Size	14.5 x 5 x 0.5 cm



1.14 x 69.8 mm

1.14 x 60.3 mm

1.07 x 57.2 mm



2010 Embroidery Needles (Blunt Tip Type) Fine



8 needles/pack	12 packs/box
Package Size	15 x 5 x 0.4 cm

Ideal for canvas work that requires thread counting.

0.53 x 42.9 mm - 2 pcs.

0.46 x 40.5 mm - 2 pcs.

0.53 x 34.9 mm - 2 pcs.

0.46 x 33.3 mm - 2 pcs.



2012 Huck Embroidery Needles



3 needles/pack	12 packs/box
Package Size	14.5 x 5 x 0.5 cm

The tip is rounded and curved so cloth can be easily scooped.

1.24 x 77.0 mm

1.24 x 67.0 mm

1.24 x 57.0 mm



233 Beading Needles (No. 10, 13)



4 needles/pack	12 packs/box
Package Size	13 x 5 x 0.5 cm

No. 10 0.41 x 54.6 mm - 2 pcs.

No. 13 0.41 x 48.5 mm - 2 pcs.

Sewing, Quilting & Embroidery Needles



234/18
Gold Eye Chenille Needles
(No. 18)

0 51221 40311 8

234/20
Gold Eye Chenille Needles
(No. 20)

0 51221 40312 5

234/22
Gold Eye Chenille Needles
(No. 22)

0 51221 40313 2

234/24
Gold Eye Chenille Needles
(No. 24)

0 51221 40314 9

6 needles/pack	12 packs/box
Package Size	13 x 5 x 0.5 cm



235
Gold Eye Embroidery Needles
(No. 3 - 9)

0 51221 40315 6

16 needles/pack	12 packs/box
Package Size	13 x 5 x 0.5 cm



238



238/24

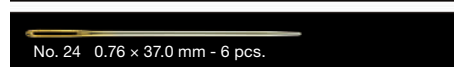
238
Gold Eye Tapestry Needles
(No. 18, 20, 22)

0 51221 40318 7

238/24
Gold Eye Tapestry Needles
(No. 24)

0 51221 40320 0

6 needles/pack	12 packs/box
Package Size	13 x 5 x 0.5 cm



237/10
Gold Eye Sharps Needles (No. 10)

0 51221 40317 0

20 needles/pack	12 packs/box
Package Size	13 x 5 x 0.5 cm



236
Gold Eye Milliners Needles
(No. 3, 5, 7, 9)

0 51221 40316 3

16 needles/pack	12 packs/box
Package Size	13 x 5 x 0.5 cm

Long needles with round eyes used for: Bonnet and hat making, pleating, ribbon embroidery and embellishing decorations.



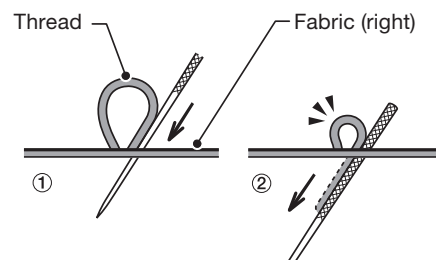
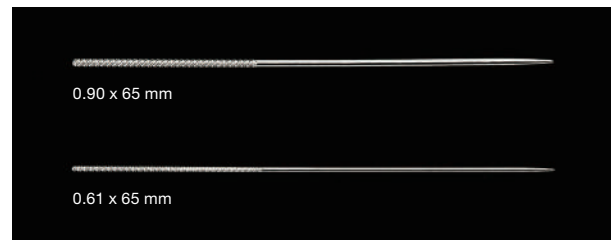
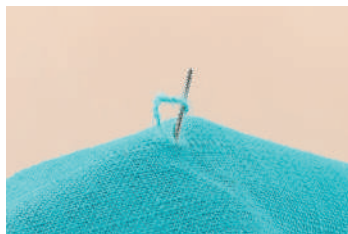


Sewing, Quilting & Embroidery Needles

Easily repair snags in knitted and woven garments!



2512	
Snag Repair Needles	
2 needles/pack	3 packs/box
Package Size	17 x 5 x 0.2 cm



- ① Insert needle in the snag's center.
- ② Pull needle through fabric, capturing entangled thread as you pull.

Pins

Flower Head Pins

Flower Head Pins can hold multiple layers of fabric.
The flat head is convenient for machine stitching.
Head is not heat-resistant. Do not apply iron directly. 3 different sizes.



2505	
Flower Head Pins	
0.55 mm	

2505



The pins will hold regular fabric of cotton, linen and wool.

2510	
Flower Head Pins	
0.45 mm	

2510



Superfine-pointed, 0.45mm marking pins will pass through fabric smoothly.
The pins will gently hold thin fabrics such as silk, silk crepe, satin and lining fabric.



2506	
Flower Head Pins Boxed	
100 pins/case	3 cases/box
Package Size	12.2 x 7.4 x 2 cm

2506



Pins

Heat resistant glass head suited for ironing.

- 0.5mm thin marking pins.
- Holes are hardly visible and the pins will smoothly pass through fabrics.
- The pins have a fine pointed tip and is made of tough steel.



2511 Marbled Glass Head Pins	
1 set/package	3 packs/box
Package Size	11.5 x 6.3 x 0.4 cm

0.50 x 36 mm
20 pins



232 Patchwork Pins	
100 pins/case	3 cases/box
Package Size	11.5 x 6 x 1.6 cm
The needle head is small and the tip is sharp. The pins have very sharp points.	



2507 Patchwork Pins (Fine)	
100 pins/case	3 cases/box
Package Size	11.5 x 6 x 1.6 cm
Extra-fine pins, which smoothly pass through fabric. Useful for precise pinning in delicate piecework and appliqué.	



2508 Quilting Pins	
100 pins/case	3 cases/box
Package Size	11.5 x 6 x 1.6 cm
Perfectly suited for quilting, as the pins feature a sharp tip and strong shaft.	



2509 Quilting Pins (Fine)	
100 pins/case	3 cases/box
Package Size	11.5 x 6 x 1.6 cm
Pins smoothly pass through fabric, as the pin tips are thin and sharp.	



231 Appliqué Pins	
150 pins/case	3 cases/box
Package Size	11.5 x 6 x 1.6 cm
Short pins (2 cm) are perfect for small appliqué work. It will not stick out since it is short.	



240 Fork Pins	
35 pins/case	3 cases/box
Package Size	13 x 7.5 x 1.6 cm
The double pins can pierce and firmly hold slippery lining materials in place. The tip is bent for easy pinning.	



Clover

Thimbles

Natural Fit Leather Thimbles



Feature 1 Seamless from top to side!



This thimble is made with three-dimensional stitching without seams or stitches in the area where the needle touches, allowing the needle to be pushed from the most convenient spot. Its side is made of full double leather to provide safety.

Feature 2 Fits the curve of your finger tip naturally!



The unique shape creates a smooth curve from the edge of the fingertip to the middle of the finger. It fits the curve of your finger tip naturally.



6028

Natural Fit Leather Thimble (Small)



1 pc./pack	3 packs/box
Package Size	15 x 7.5 x 2 cm



6029

Natural Fit Leather Thimble (Medium)



1 pc./pack	3 packs/box
Package Size	15 x 7.5 x 2 cm



6030

Natural Fit Leather Thimble (Large)



1 pc./pack	3 packs/box
Package Size	15 x 7.5 x 2 cm

Protect and Grip Thimbles



6025

Protect and Grip Thimble (Small)



1 pc./pack	3 packs/box
Package Size	15 x 7.5 x 2 cm



6026

Protect and Grip Thimble (Medium)



1 pc./pack	3 packs/box
Package Size	15 x 7.5 x 2 cm

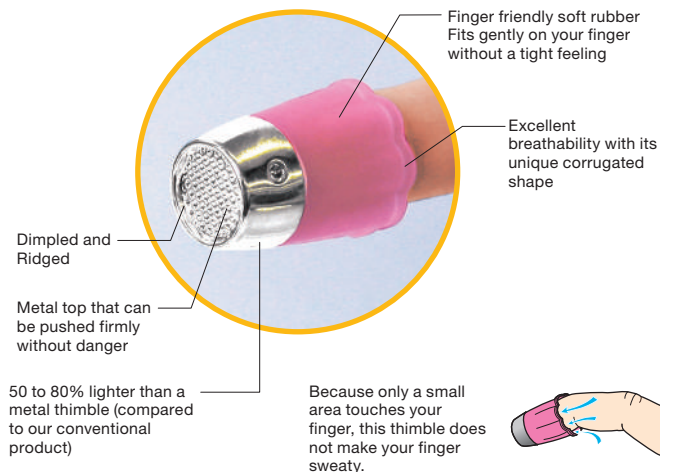
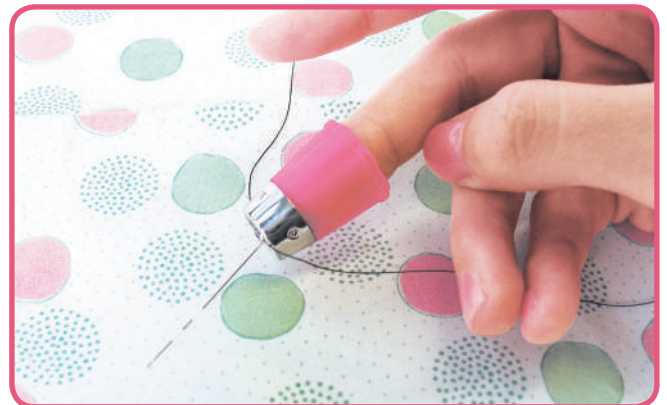


6027

Protect and Grip Thimble (Large)



1 pc./pack	3 packs/box
Package Size	15 x 7.5 x 2 cm



Thimbles



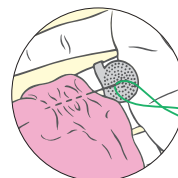
610 Adjustable Ring Thimble	
1 pc./pack	3 packs/box
Package Size	10.5 × 6.5 × 1.4 cm



The metal thimble can be used for thick needles and can be adjusted to any finger size.



611 Adjustable Ring Thimble with Plate	
1 pc./pack	3 packs/box
Package Size	10.5 × 6.5 × 1.4 cm

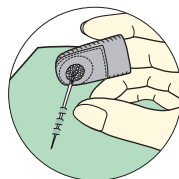


Designed for long-running stitches using a long needle or Sashico. Adjustable to fit any finger.



6014 Coin Thimble (Medium)	
1 pc./pack	3 packs/box
Package Size	12.7 × 5 × 1.5 cm

Soft leather thimble with coin metal dimpled disk.



616 Double Sided Thimble	
1 pc./pack	3 packs/box
Package Size	12.7 × 5 × 1.5 cm

Made of soft leather. This thimble has double sided metal "dimpled" tip.



6017 Open Sided Thimble (Small)	

6018 Open Sided Thimble (Medium)	

1 pc./pack	3 packs/box
Package Size	14.5 × 6.5 × 2 cm

Adjustable Open Sided Thimble that fits your finger comfortably. Designed with an open top to keep your finger from perspiring. Dimpled for easy use on needles. Suited for people with long fingernails.



6017

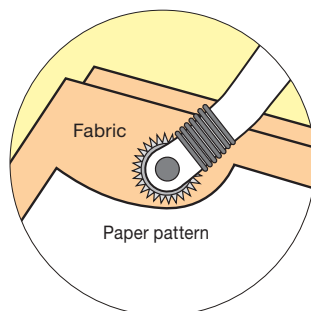


6018





480/W Tracing Wheel (Serrated Edges)	
1 pc./pack	3 packs/box
Package Size	19 × 4.5 × 1.4 cm

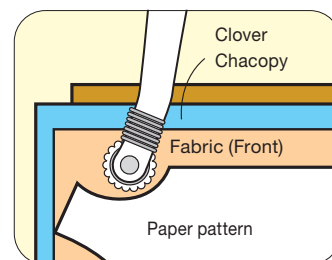


The tracing wheel is used for marking directly onto fabrics. Suitable for marking on thin fabrics.

Trace and mark the holes by rolling the wheel forward along the paper pattern.



481/W Tracing Wheel (Blunt Edges)	
1 pc./pack	3 packs/box
Package Size	19 × 4.5 × 1.4 cm

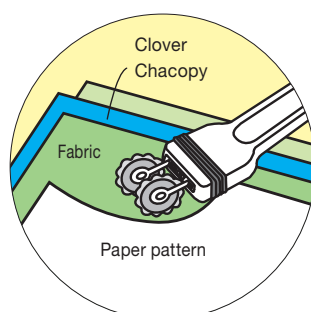


This wheel is used when transferring the pattern to fabrics using Tracing Paper "Clover Chacopy".

The blunt edges will mark the line without tearing the pattern or Chacopy carbon paper.



487/W Double Tracing Wheel	
1 pc./pack	3 packs/box
Package Size	19 × 5.5 × 1.4 cm



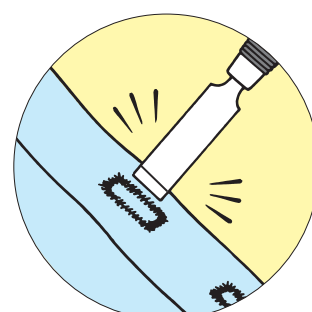
The Double Tracing Wheel can draw two lines at the same time and the space between each wheel can be changed in units of 5mm.

Seam line and cutting line can be marked at the same time.

The space between the two wheels can be adjusted in units of 5mm between 10-30mm.



484/W Buttonhole Cutter	
1 pc./pack	3 packs/box
Package Size	19 × 4.5 × 1.4 cm



This cutter makes the job of opening buttonholes or small cuts on fabrics easy.

After stitching a buttonhole, use this cutter to open it by placing and pressing the blade on the beads of the buttonhole vertically.

This cutter is also useful for making small cuts and cutting through curves. (12mm wide)

Sewing Notions

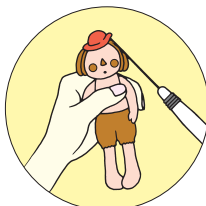
The Straight Tailor's Awl and the Tapered Tailor's Awl are convenient for detailed work.

These awls are used for detailed work such as shaping the edges, feeding the cloth into the sewing machine and untying threads. With a sharp edge like an artillery shell, the awl is suitable for marking and opening holes especially for thick fabrics and leather.



485/W Straight Tailor's Awl	
1 pc./pack	3 packs/box
Package Size	19 x 4.5 x 1.4 cm

Designed for piercing small holes or craft works for doll making.



486/W Tapered Tailor's Awl	
1 pc./pack	3 packs/box
Package Size	19 x 4.5 x 1.4 cm

Very useful in punching holes in leather and fabrics, pulling out corners and widening out spaces.



4880 Curved Tailor's Awl	
1 pc./pack	3 packs/box
Package Size	19 x 4.5 x 1.4 cm

With its curved tip, this awl is perfect for such tasks as producing curves, feeding cloth, or undoing seams. In addition, the tip has a smooth finish, which makes injury to the cloth or your fingers difficult.



876 Ball Point Awl	
1 pc./pack	3 packs/box
Package Size	19 x 4.5 x 1.4 cm

The Ball Point Awl is used for making a hole by carefully stretching the fabric without thread breakage.



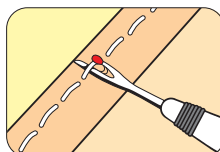
Used to cut threads by placing the longer tip under the thread and pushing forward.

The seam ripper comes with a small ball to protect it from damaging the fabric.



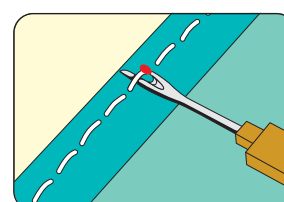
482/W Seam Ripper	
1 pc./pack	3 packs/box
Package Size	19 x 4.5 x 1.4 cm

Used to cut seams, basting threads or threads under buttons.



463 Seam Ripper	
1 pc./pack	3 packs/box
Package Size	18.5 x 7.5 x 0.8 cm

Perfect for ripping out seams, cutting threads and buttonholes.



Marking Tools



<Extra Fine>

Markings naturally disappear in 2 - 7 days.

<Thick>

Markings naturally disappear in 4 - 14 days.

<Fine>

Markings naturally disappear in 4 - 14 days.

5030

**Air Erasable Marker
(Purple Extra Fine)**



5031

**Air Erasable Marker
(Purple Thick)**



5032

**Air Erasable Marker with Eraser
(Purple Fine)**



1 pc./pack

3 packs/box

Package Size

21 × 4.3 × 1.2 cm



Fine



Thick

515

**Water Erasable Marker
(Fine)**



1 pc./pack

3 packs/box

Package Size

19 × 4.3 × 1.2 cm

516

**Water Erasable Marker
(Thick)**



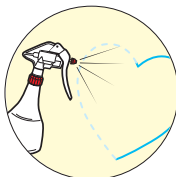
1 pc./pack

3 packs/box

Package Size

19 × 4 × 1.2 cm

Markings can be quickly removed with water.



5013

**Chacopen Blue with Eraser
(Water Erasable)**



1 pc./pack

3 packs/box

Package Size

19 × 4 × 1.2 cm

Water Erasable.
Comes with a convenient "ERASER PEN" for immediate erasure of unwanted marks.

518

Eraser Pen



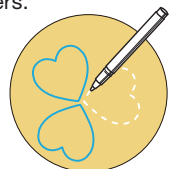
1 pc./pack

3 packs/box

Package Size

19 × 4 × 1.2 cm

Used to remove markings made by Water Erasable Markers.



White Marking Pen



517

**White Marking Pen
(Fine)**



1 pc./pack

3 packs/box

Package Size

21 × 4.3 × 1.2 cm

A white marker perfect for marking black and dark-coloured fabrics. Markings disappear when washed or ironed.



The white ink stands out on black and dark-coloured fabric.



Marking Tools



5003	
Water Soluble Pencil	
(Package of 3)	

3 pcs./pack	3 packs/box
Package Size	26 x 4 x 1.1 cm

5000	
Water Soluble Pencil	
(White)	

5001	
Water Soluble Pencil	
(Blue)	

5002	
Water Soluble Pencil	
(Pink)	

1 pc./pack	3 packs/box
Package Size	26 x 4 x 1.1 cm

The Water Soluble Pencils can be easily wiped off with water.
Best suited for precise marking on fabric.



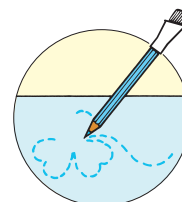
418	
Chacopel Fine	

1 set/pack	3 packs/box
Package Size	26 x 4.5 x 1 cm

Fine lines can be clearly marked.

Contents

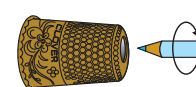
- White: 1 pc.
- Yellow: 1 pc.
- Pink/Blue: 1 pc.
- Sharpener: 1 pc.



4003	
Pencil Sharpener	

1 pc./pack	3 packs/box
Package Size	12 x 5 x 2 cm

Designed for Clover's Quilting Pencils, Water Soluble Pencils and other pencils designed for marking on fabric.



5004	
Iron-On Transfer Pencil	
(Red)	

5005	
Iron-On Transfer Pencil	
(Blue)	

1 pc./pack	3 packs/box
Package Size	26 x 4 x 1.1 cm

Draw designs with the Iron-On Transfer Pencil, and transfer it onto the fabric with an iron.
The traced design can be transferred to fabrics, papers and woodblocks.



For transferring the appliqué and doll designs.



How to use:

- (1) Place tracing paper on the design that you wish to transfer.
- (2) Trace the design with the Iron-On Transfer Pencil.
- (3) Place the traced design on the fabric and iron.
The traced design will appear on the fabric.

Easy transfer with an iron.
The traced design can be used for 2-3 times.

Marking Tools

A powder chalk which allows you to mark fabric as if you are drawing with a pen

A powder-based chalk for drawing thin, beautiful lines.
With its pen-like use, you can make marks as if you are drawing freehand.

Features of Chaco Liner Pen Style

Length, thickness and angle that are easy to hold

The length and thickness have been designed to achieve the pen-like ease-of-use.

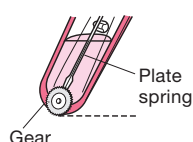
Also, the chalk can be easily turned around to draw both straight and curved lines freely as it supports many different angles.

Marks can be easily made along the ruler

You can draw beautiful lines along the ruler with the pointed tip.

The amount of remaining powder is visible

You can see how much powder you have left through the transparent case.



Cross section

The powder comes out when the gear tooth is rolled on fabrics due to the vibration from the plate spring.

Save time on refilling by exchanging the cartridge

Powder can be refilled easily by simply exchanging the cartridge. When refilling, the powder will hardly spill over or dirty your hand.



Smooth touch

The shape of the sharp gear tooth, inner parts and powder components were carefully reviewed to achieve a smooth touch.



NET: 2.5 g approx.



4710

Chaco Liner Pen Style (Blue)



4711

Chaco Liner Pen Style (Pink)



4712

Chaco Liner Pen Style (White)



4713

Chaco Liner Pen Style (Yellow)



4714

Chaco Liner Pen Style (Silver)



1 pc./pack

3 packs/box

Package Size

19 x 6.5 x 1.5 cm

Wheel tip powder chalk.
Permits accurate markings for both straight lines and freehand curves.

Refills for Chaco Liner Pen Styles.



NET: 2.5 g approx.

Easy Replacement



4720

Refill Cartridge for Chaco Liner Pen Style (Blue)



4721

Refill Cartridge for Chaco Liner Pen Style (Pink)



4722

Refill Cartridge for Chaco Liner Pen Style (White)



4723

Refill Cartridge for Chaco Liner Pen Style (Yellow)



4724

Refill Cartridge for Chaco Liner Pen Style (Silver)



1 pc./pack

3 packs/box

Package Size

19 x 5.5 x 1.5 cm

Marking Tools

Powder chalk.

Chaco Liners are perfect for drawing thin lines.

Wheel tip for accurate marking on fabric.



469/B
Chaco Liner (Blue)

0 51221 51471 5

469/P
Chaco Liner (Pink)

0 51221 51470 8

469/W
Chaco Liner (White)

0 51221 51472 2

469/Y
Chaco Liner (Yellow)

0 51221 51469 2

1 pc./pack	3 packs/box
Package Size	15.5 x 7.5 x 2 cm



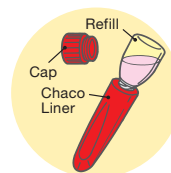
NET: 2.2 g approx.



Powder chalk refills for Chaco Liners.



NET (1 pc.): 2.8 g approx.



470/B
Chaco Liner Refill (Blue)

0 51221 51481 4

470/P
Chaco Liner Refill (Pink)

0 51221 51480 7

470/W
Chaco Liner Refill (White)

0 51221 51482 1

470/Y
Chaco Liner Refill (Yellow)

0 51221 51483 8

2 pcs./pack	3 packs/box
Package Size	10.5 x 6.5 x 2.3 cm

Tailor's Chalks available in four colours.

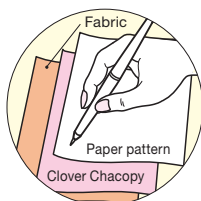


Size: 30 x 25 cm

434
Tracing Paper "Clover Chacopy"

0 51221 51343 5

5 sheets/pack	3 packs/box
Package Size	32.5 x 12.5 x 0.4 cm



432/B
Triangle Tailor's Chalk (Blue)

0 51221 51215 5

432/W
Triangle Tailor's Chalk (White)

0 51221 51217 9

432/Y
Triangle Tailor's Chalk (Yellow)

0 51221 51218 6

432/R
Triangle Tailor's Chalk (Red)

0 51221 51216 2

1 pc./pack	3 packs/box
Package Size	8.4 x 6.5 x 1 cm



432/B



432/W



432/Y



432/R

Sewing Accessories

For more efficient craftwork!

Amazing pressing force with just a little effort!

The Roll & Press is a quick and efficient way to make creases or to open and fold seam allowances.



7812	
Roll & Press	
1 pc./pack	3 packs/box
Package Size	21 x 8 x 3 cm

Roll to press a seam or fold, either straight, curved or paper pieced seams.

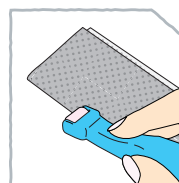


Convenient in these situations too!

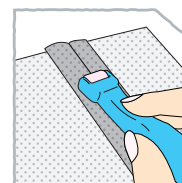
For laminates and other fabrics that cannot be ironed

For foundation piecing (paper piecing) and machine piecing

For making a crease before ironing



• Crease fabric



• Fold seam allowance
• Open seam allowance

Fabric and hand-friendly.

A roller that glides smoothly

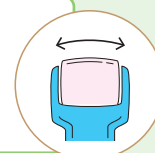
- Doesn't pull or distort fabric
- Allows you to press fabrics along straight or curved lines

Quick, portable, ergonomic

- Can be held in most comfortable position - left or right handed
- Just a little downward force is all that is needed for significant pressing action.

Press small areas with accuracy

- The roller's slight arc allows you to focus pressure on precise areas
- Roller edges will not leave creases on the fabric

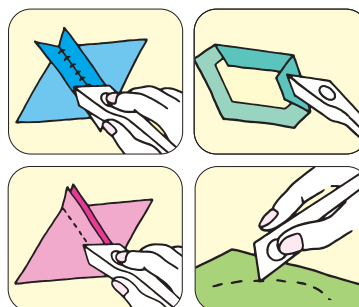


Sewing Accessories

Suitable for making creases and opening and folding the seam allowance of a piece.



495	
Finger Presser	
1 pc./pack	3 packs/box
Package Size	19 x 4.5 x 1 cm



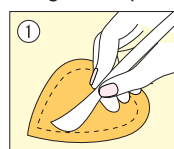
Perfect for foundation piecing, patchwork and appliqué. Made from abrasion-resistant durable material.

The ideal shape of the spatula and the extra thin tip useful in folding are perfect for appliqué.

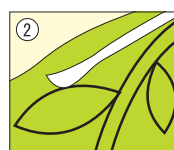


4002	
"HERA"™ Marker for Appliqué & Sewing	
1 pc./pack	3 packs/box
Package Size	21 x 4.5 x 0.9 cm

Usage examples of the spatula



This marker is easy to use for appliqué work and creasing.



For making marks on appliqué and reverse appliqué

Usage example of the sharp tip



For folding appliqué and reverse appliqué



Extra thin tip with curved design.

Used for marking and creasing on fabric.



490/NV	
"HERA"™ Marker	
1 pc./pack	3 packs/box
Package Size	19 x 4.5 x 0.8 cm

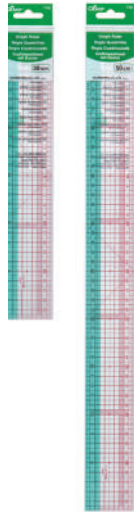


An easy grip, easy press spatula

Sewing Accessories

A sewing ruler with adequate flexibility.

This ruler is perfect for sewing/knitting drafts or drawing seam lines. Parallel lines can be drawn accurately at several distances. The ruler is made of a flexible material to help measure curved portions. With this ruler, you can clearly read scales even on dark-coloured fabrics and easily draw a true bias line with a 45° line.



7702

Graph Ruler (30 cm)



1 pc./pack

3 packs/pack

Package Size

33 x 5.5 x 0.1 cm

7703

Graph Ruler (50 cm)



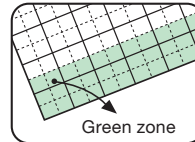
1 pc./pack

3 packs/pack

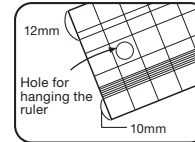
Package Size

53 x 5.5 x 0.1 cm

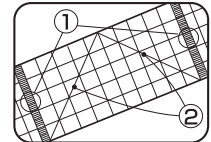
Thickness: both 30cm/50cm rulers are 1.0mm thick



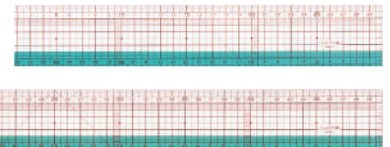
The green zone allows you to read scales easily even on dark-coloured or patterned fabrics.



10mm to 15mm parallel lines, which are often used for drawing seam lines, and especially the most popular 12mm parallel line, are separately marked.



①The two scales subdivided into 1mm divisions just like in the diagram allows you to draw parallel lines accurately.
②The 45° angle line helps to easily and correctly mark the line for cutting on the bias.



The compact, easy-to-use curve ruler with parallel lines useful for marking seam allowances.

These rulers are optimal for drawing curved lines when copying sewing patterns, creating drafts, or drawing curved seam lines quickly and neatly. Parallel lines are marked along the edge of the curve, enabling the drawing of curved seam lines easily. This is a set of two curve rulers and a mini ruler (15cm).



7704

Curve Ruler with Mini Ruler



1 set/pack

3 packs/box

Package Size

39.5 x 11 x 0.4 cm



The rulers come with an attached case.

Curves perfect for sewing

Deep curve
For the neckline or armhole

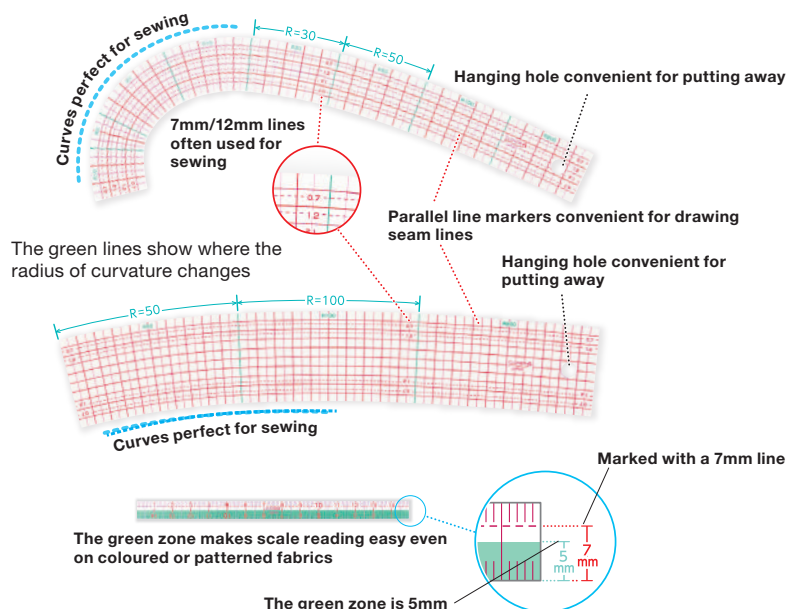


Gentle curves
For the hem and hip lines



Mini ruler (15 cm)
For measuring intricate portions

The green lines show where the radius of curvature changes




Sewing Accessories

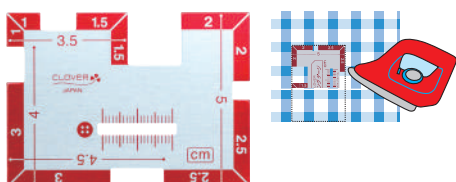
This gauge will allow you to quickly mark seam allowances.

Applicable to most seam allowances with a gauge set from 1 to 5cm in 5mm increments.

The gauge is made of metal, so it can be used to make creases using an iron or as a template for creating sharp corners for pockets, etc.



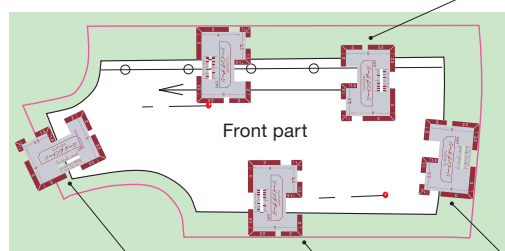
7705	
Sewing Gauge	
	
1 pc./pack	3 packs/box
Package Size	16 x 8 x 0.2 cm



This gauge can also be used when creasing with an iron as it is made of metal.

A gauge in 5mm increments works for most seam allowances.

Comes with a buttonhole guide
Very useful in making marks during drafting.



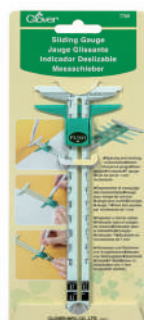
Shoulder seam allowance: 1.5cm


Hem seam allowance: 3.0cm

Side seam allowance: 2.0cm

This sliding gauge is useful in marking seam allowances.

Multipurpose sliding gauge useful for marking.

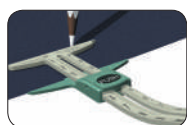
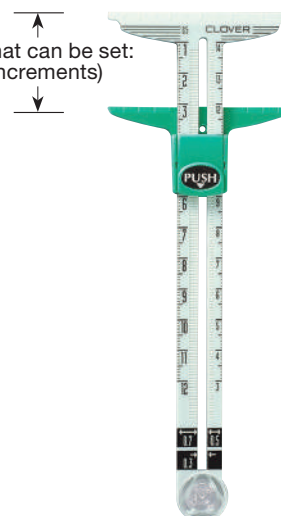


7706	
Sliding Gauge	
	
1 pc./pack	3 packs/box
Package Size	22 x 10.2 x 0.9 cm

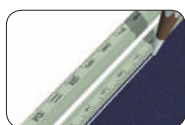
Convenient for drawing seam lines, hem lines, tucks, pleats, buttonholes and other markers where the same dimensions need to be used repeatedly.



Measurements that can be set:
5-120mm (1mm increments)



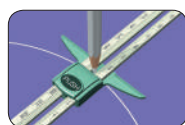
•Hem gauge



•Seam allowance gauge




•Spacing and marking buttonholes



•Compass

Inch gauge



9507	
Seams Right with NANCYZIEMAN®	
	
1 pc./pack	3 packs/box
Package Size	16 x 8 x 0.3 cm

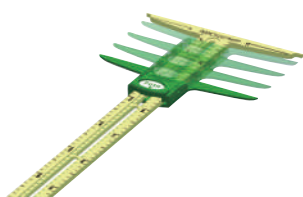


9506	
5-in-1 Sliding Gauge with NANCYZIEMAN®	
	
1 pc./pack	3 packs/box
Package Size	23 x 10 x 1 cm

Sewing Accessories

Inch gauge

A multifunctional 11 inch (279.4 mm) sliding gauge for easy marking!



Note from Nancy:

The Supersize 5-in-1 Sliding Gauge is the perfect companion to the original 5-in-1 Sliding Gauge. The extra-long length makes it easy to accurately position grainlines, measure deep hems, position trims, create large circles, and measure distances.

9585

Supersize 5-in-1 Sliding Gauge
with NANCYZIEMAN®



1 pc./pack

3 packs/box

Package Size

37.5 x 11.5 x 1.0 cm

This set of seam markers allows you to neatly draw seam lines along the edges of a pattern/template.

These Seam Markers allow you to draw parallel seam allowances even with a curved pattern or template.

Suitable for transferring patterns and templates on appliqué ...and Hawaiian quilts.



7707

Seam Marker Set



1 set/pack

3 packs/box

Package Size

18.5 x 6.5 x 0.5 cm

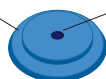


Comes in a set of 4 Seam Markers (3mm/5mm/7mm/10mm width).

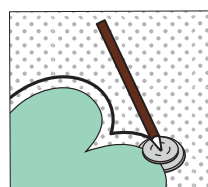


How to use:

Insert the template/pattern into the groove along the edge of a marker.



Place the pen tip in the hole.



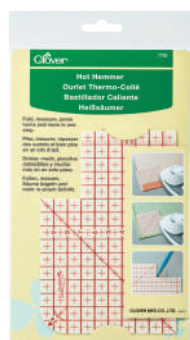
Mark seam allowances of any shape of pattern or template (thickness of 0.6 mm max.).

Roll and draw along the edge of the pattern.

Sewing Accessories

This ruler can simplify three-folding, hemming and cloth wrapping.

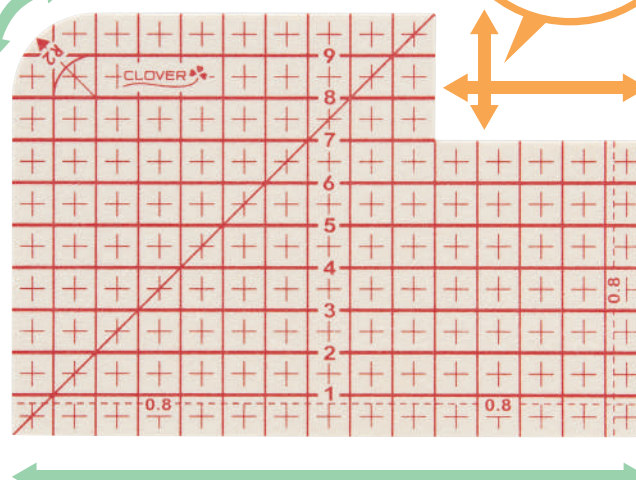
Fold, measure, press hems and more in one step.



7700	
Hot Hemmer	
1 pc./pack	3 packs/box
Package Size	25 x 13.8 x 0.2 cm

Thickness: 1.0mm

For rounded edges of pockets



For folding fabric over a long straight line
(Hemming of shirts, pants, and more)

For folding fabric over a gentle curve
(Hemming of skirts)

Convenient for folding fabric over a long straight line or a curve

This long version of the Clover Hot Hemmer can simplify three-folding, hemming and cloth wrapping. Measure, mark, fold, press: deep hems, long hems.



7701	
Hot Hemmer (Long)	
1 pc./pack	3 packs/box
Package Size	31 x 9.8 x 0.2 cm

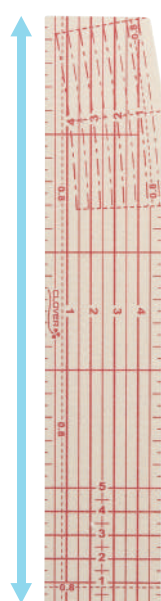
Thickness: 1.0mm

For long straight lines!
25cm long

For small parts!

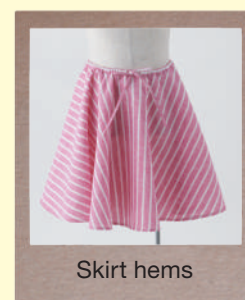


Cuffs



Curved side

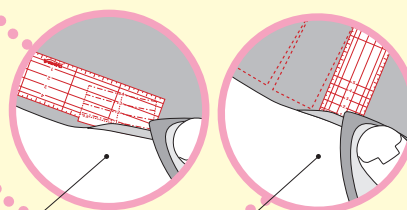
For curves!



Skirt hems

You can fold over a curve by using two sides.

*There are curves this ruler cannot hem.



Short side

By using the curved side...

By using the short side...

Sewing Accessories

Thread both large-sized and small-sized needles easily and flawlessly.

You can easily thread needles of any size by inserting them into the same place and pressing a button. Most of Clover Needles (0.51-0.89mm) for sewing and patchwork can be threaded.

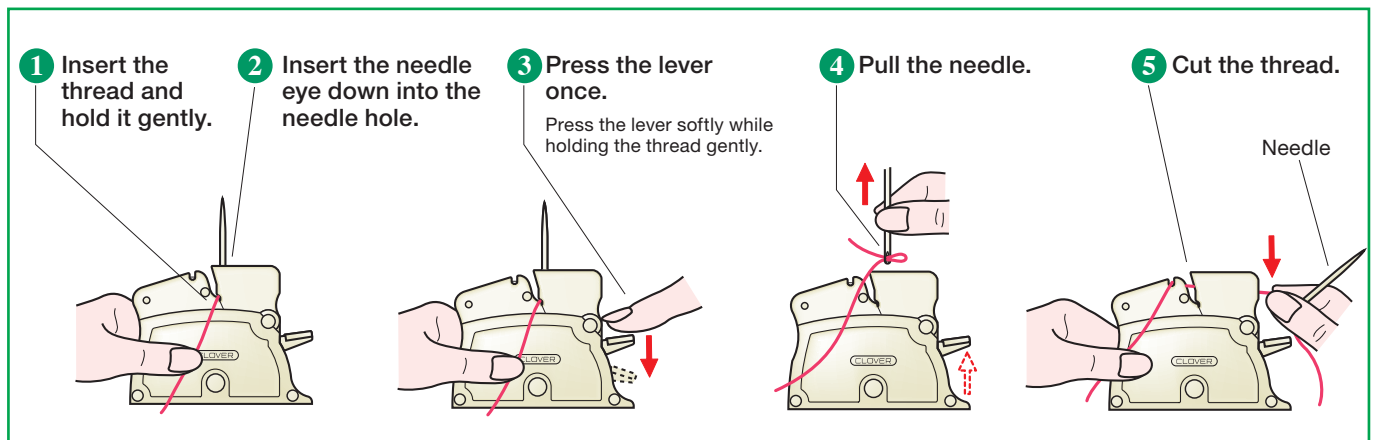
Choose Clover Needles for smooth threading!



4071	
Desk Needle Threader (Purple)	
1 pc./pack	3 packs/box
Package Size	14.6 x 11 x 2.8 cm

4072	
Desk Needle Threader (Green)	
1 pc./pack	3 packs/box
Package Size	14.6 x 11 x 2.8 cm

4073	
Desk Needle Threader (Pink)	
1 pc./pack	3 packs/box
Package Size	14.6 x 11 x 2.8 cm



Caution: If the thread does not go through, place the needle down and repeat the procedures ① to ④.

<Cautions for use>

- Make sure the thread thickness is applicable to the size of the needle.
- When the thread is pushed through the eye of the needle with too much force, it may be damaged. In this case, pull thread through the eye and cut off the damaged part.
- To store this product, remove needle.

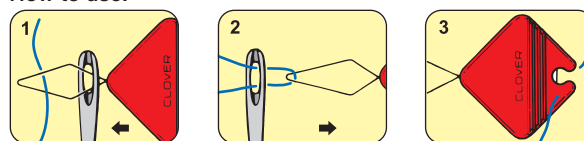
Sewing Accessories



478 Threader with Cutter "PETIT CUT"	
2 pcs./pack	3 packs/box
Package Size	10.5 × 6.5 × 0.7 cm

Threader and cutter in one.

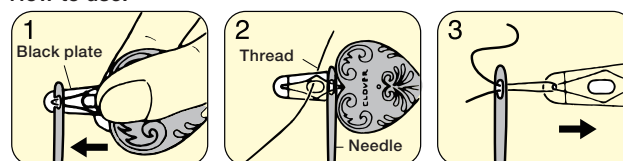
How to use:



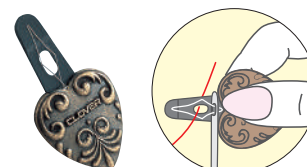
466 Quilt Needle Threader	
1 pc./pack	3 packs/box
Package Size	10.5 × 6.5 × 0.5 cm

Antique gold Quilt Needle Threader used for threading fine needles.

How to use:



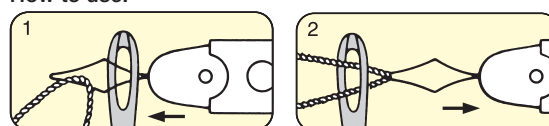
(1) Insert the wire on the black plate into the needle eye.
(2) Insert the thread through the wire and the hole in the black plate.
(3) Pull the needle off the wire.



462/NV Double Needle Threader	
1 pc./pack	3 packs/box
Package Size	15.3 × 4.2 × 0.7 cm

Thread both large-sized and small-sized needles.

How to use:



Eye-catching design with new functions.

Threader specially designed for embroidery threads (embroidery needles).



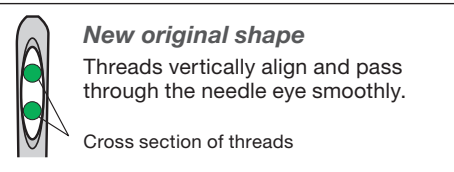
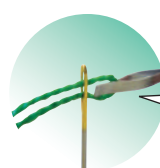
8611 Embroidery Threader	
1 pc./pack	3 packs/box
Package Size	15 × 5.5 × 0.8 cm

Comes with a cap



Embroidery Threader has a "Flat tip" for easy and smooth threading even with thick threads.

Thread even thick threads smoothly



*Please use the designated number and types of threads for each embroidery needle.

Sewing Accessories

You can store threaded needles by winding them onto the reel.



625

Dome Threaded Needle Case



1 pc./pack

3 packs/box

Package Size

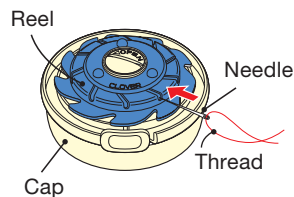
16.5 x 10 x 3 cm

Store 10 threaded needles neatly!

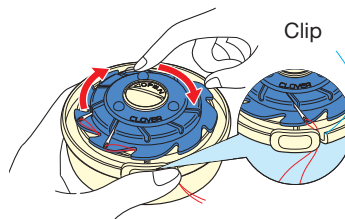


How to use:

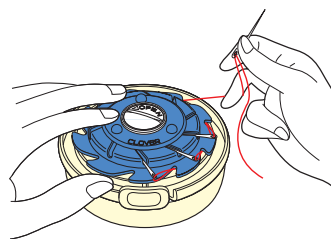
(1) Insert the threaded needle into the groove.



(2) Rotate dome to wind the thread.



(3) To remove the needle, hold the dome and pull the needle slowly.



415

Thread Clipper "KUROHA"

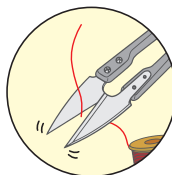


1 pc./pack

3 packs/box

Package Size

18.5 x 7.5 x 1.3 cm



High quality precision clipper with excellent sharp cutting edge.



454

Thread Cutter Pendant
(Antique Silver)



455

Thread Cutter Pendant
(Antique Gold)



1 pc./pack

3 packs/box

Package Size

10.5 x 6.5 x 0.9 cm



The thread cutter pendant has a built-in sharp circular blade to cut threads. It can be set on top of a thread wheel or used as a pendant. Available in antique silver & antique gold.

Sewing Accessories

Magnet Pin Caddy

Drop needles on the Magnet Pin Caddy and it will catch and store them in the same direction with its magnetic force.



4105	
Magnet Pin Caddy (Bordeaux)	
1 pc./pack	3 packs/box
Package Size 18.5 × 12 × 4 cm	



The Magnet Pin Caddy comes with fine and smooth Clover Silk Pins (10 pins) for trial.

Center groove makes picking up pins from caddy easy.
Includes cover for safe and easy storage, and allows for stacking caddy.
Multiple cushions can be stacked for storage.



The wristband easily attaches and detaches the cushion to your wrist.



9575	
Pin 'n Stow with NANCY ZIEMAN®	
1 pc./pack	3 packs/box
Package Size 26.5 × 11 × 2 cm	

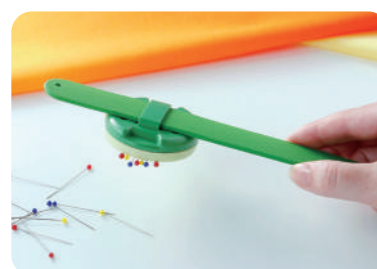
- It's magnetic!
- Band fits to wrist with a "Slap".
- Grooved for easy pickup.



Gently wraps around your wrist
Soft wrist band made of silicon



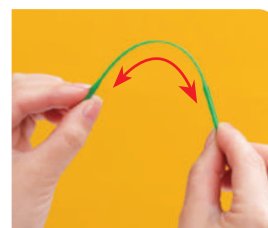
Secures pins in one direction
and allows for easy pickup



Picks up dropped needles with
magnetic force



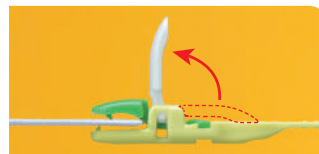
9581 Flex 'n Glide Bodkins with NANCY ZIEMAN®	
2 pcs./pack	3 packs/box
Package Size	23 × 7.3 × 0.5 cm



- Handy length and flexibility allow smooth passage even along curves.
- Flex 'n Glide Bodkin eye features grippers to ensure drawstring remains firmly in place.
- Large bodkin eye is ideal for easy threading of wide or narrow drawstring.



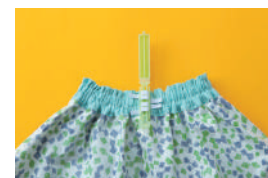
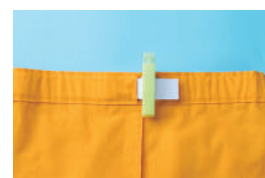
9582 Clip 'n Glide Bodkin with NANCY ZIEMAN®	
1 pc./pack	3 packs/box
Package Size	23 × 7.3 × 1.1 cm



- Clip provides firm hold on elastic end for pulling through casing with ease.
Suitable elastic width: 5/8 in. (15 mm) or wider
Width of casing opening: 3/4 in. (20 mm) or wider
- Exceptional flexibility ensures smooth passage along curvy areas.



9583 Elastic Lock Set with NANCY ZIEMAN®	
2 pcs./pack	3 packs/box
Package Size	23 × 8.5 × 1.5 cm

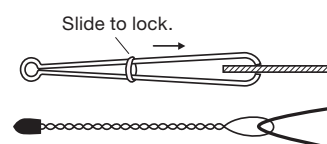


- Elastic Lock firmly holds elastic or tape ends and prevents slipping into casing.
- Side clips for locking two elastics simultaneously—easily pull two rows of elastics through casing!

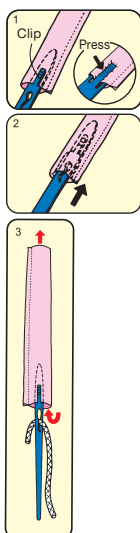


4001 Bodkin (2 Types)	
2 pcs./pack	3 packs/box
Package Size	12.6 × 5 × 0.7 cm

For threading of ribbon and elastic tape.



Sewing Accessories



472 Easy Loop Turner



2 pcs. (2 sizes)/pack 3 packs/box
Package Size 33 x 4.5 x 0.4 cm



For turning loops inside out.
The loop can be used to insert cording by tying it to the hole.
(See illustration 3.)



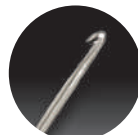
4910 Soft Touch Thread Pick



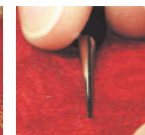
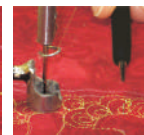
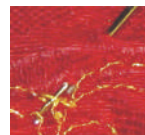
1 pc./pack 3 packs/box
Package Size 19 x 4 x 1.0 cm

- The perfect tool for hiding or removing stray threads
- Easily slips through the top fabric, leaving no marks or punctures
- Ideal for long-arm quilters and machine embroidery

Steel tip



Optimal shape for grabbing thread!



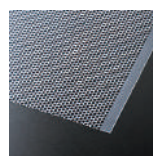
4052 Loop Pressing Bars



5 pcs. (5 sizes)/pack 3 packs/box
Package Size 34 x 11 x 0.5 cm

Easily make loops, 3D appliqué and Celtic designs.
Seam allowance can be pressed with iron.
The loop can be used to insert cording by tying it to the hole.

Available widths:
6, 9, 12, 15, 18 mm



30 x 40 cm

474 Mesh Transfer Canvas



1 pc./pack 3 packs/box
Package Size 39 x 7 x 1.4 cm

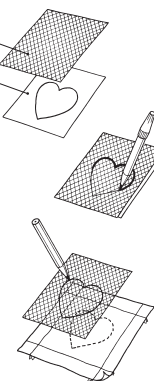
The sheet of fine mesh is useful for transferring quilt lines and appliqué design layouts.
By using the mesh you don't have to cut out the shape you want to use and trace around.

Mesh Transfer Canvas

Design

How to use:

- (1) Place the mesh sheet over the design you wish to use.
- (2) Using a ballpoint pen or coloured pen trace the design for a permanent pattern.
- (3) Place the mesh with design marked on it over your fabric.
- (4) Using Clover's Water Erasable Markers or Chacopel Fine pencils to trace over the design you have marked on your mesh sheet.



806 Spring Tape Measure (60 inch/150 cm)



1 pc./pack 3 packs/box
Package Size 15.5 x 7.5 x 1.8 cm

Fiber glass tape measure prevents from stretching.
Inches and metric measurement.



Size: 12 mm x 7 m

9505 Double Sided Basting Tape with NANCY ZIEMAN®



1 pc./pack 3 packs/box
Package Size 12.6 x 9.5 x 1.4 cm

Quickly and easily adheres to fabric, paper or wood.



NET: 6 g

514 Fabric Adhesive Stick



1 pc./pack 3 packs/box
Package Size 16 x 5 x 2 cm

Holds fabric, paper, felt and interfacing temporarily.
The fabric adhesive stick will not gum the needles.

For holding fabrics temporarily in place

Maintains the original feel of the fabric and needles will pass through smoothly.

Sewing Accessories



494/S
Patchwork Templates
(Squares/Octagons)

4 901316 860097

7 pcs./pack	3 packs/box
Package Size	18.5 x 13 x 0.8 cm

Basic pattern templates set.
Templates with openings showing
both the seam line and cutting edge.

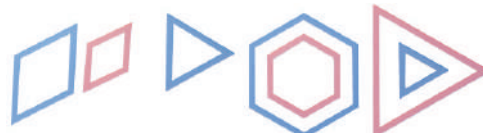


494/T
Patchwork Templates
(Triangles/Hexagons)

4 901316 860080

7 pcs./pack	3 packs/box
Package Size	18.5 x 13 x 0.8 cm

Basic pattern templates set.
Templates with openings showing
both the seam line and cutting edge.

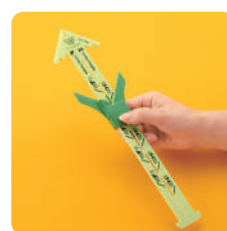


9579
No-Hassle Triangles Gauge
with NANCYZIEMAN®

0 51221 79579 4

1 pc./pack	3 packs/box
Package Size	37 x 10 x 1.4 cm

Create 1/2-square or 1/4-square
triangle blocks without ever cutting
triangles.



QUICK BIAS <Fusible Bias Tape>



Easily ironed on to straight or curved fabric designs.
It will eliminate time consumed in making and pinning it in place.
Excellent for use in Stained Glass Quilting, Celtic and Appliqué work
or projects.

QUICK BIAS (Width: 6mm)		Packing: 6 reels/box	
700/1128	1128	700/GOLD	GOLD
	Black		
	0 51221 50890 5		0 51221 50902 5
		700/SILVER	Silver
			0 51221 50903 2



* Actual colours may vary from printed version.

Sewing Accessories



7802 Iron Finger	
1 pc./pack	3 packs/box
Package Size	31 x 9.5 x 2.1 cm

Turn, press, roll, point.

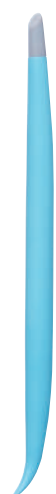
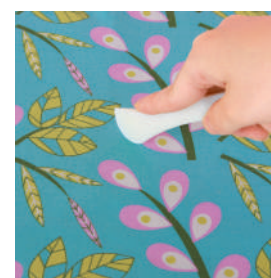
- Multi-purpose, heat resistant pressing tool.
- Press with or without the iron.
- Soft grip for secure and easy handling.



7803 Point 2 Point Turner	
1 pc./pack	3 packs/box
Package Size	25.5 x 6.5 x 0.9 cm

Turn every point perfectly.

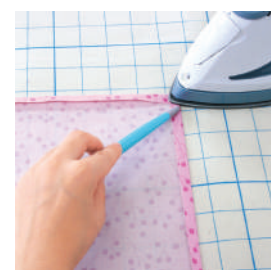
- Curved end with tip for point turning.
- Fine tipped end for detail work.
- Designed to be comfortable and secure in hand when using either end.



7807 Hold It Precision Stiletto	
1 pc./pack	3 packs/box
Package Size	25.5 x 6.5 x 1.2 cm

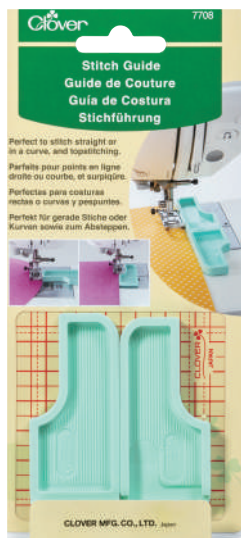
Hold while sewing or pressing.

- Grippy tip for holding fabric.
- Angled tip for good reach and visibility.
- Heat resistant silicone tip for working near iron while pressing.



Sewing Accessories

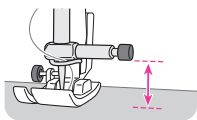
A stitch guide that can be aligned with the edge of the fabric for stitching.



7708 Stitch Guide	
1 set/pack	3 packs/box
Package Size	18 x 9.4 x 1.2 cm

Note:

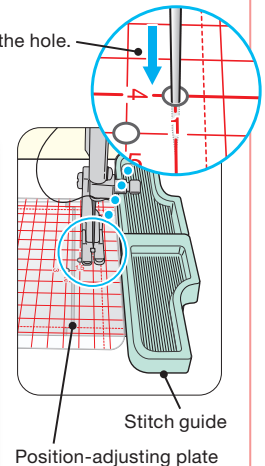
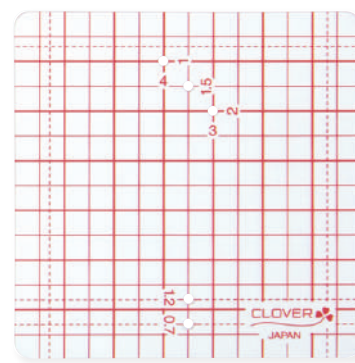
This guide is suitable for sewing machines of which gap between a needle clamp screw and a needle plate is higher than 8mm.



Comes with a position-adjusting plate!

Now the plate can be kept parallel and the guide can be positioned more easily with a hole for a sewing-machine needle.

The needle goes into the hole.



If the stitch guide is aligned with the fabric before stitching with a sewing machine, a neat stitch with a consistent seam-width can be achieved.

The guide comes with an adhesive sheet that can adhere to both metal and plastic surfaces, enabling it to be fixed at any location.

When sewing curved seams



Two guides can be connected and used together

Stitching straight



Use the long side of the guide.



Use both guides connected.

Stitching curves: use the short side of the guide.



inner curve



outer curve

Topstitching: place the guide in front of the presser foot and sew.



Stitching strips: with two guides, you can sew strips neatly.

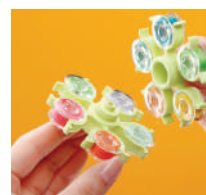


Sandwich with the two stitch guides



9508 Stack 'n Store Bobbin Tower with NANCYZIEMAN®	
1 set/pack	3 packs/box
Package Size	11.5 x 7 x 7 cm

- Holds any type of bobbin.
- Secures thread ends - no more tangles!
- See thread colours at a glance!
- Convenient and compact!



"I had a drawer filled with loose bobbins - what a mess! Now I have my bobbins neatly organised next to my sewing machine. What a great organiser!" –Nancy Zieman

Wonder Clips

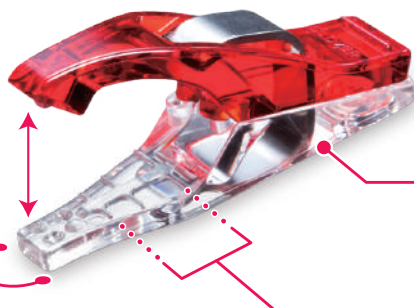
All you have to do is clip it on and off

Clips to temporarily hold fabric together for sewing <mini>

Narrow tips for precision clipping

Maximum
8mm

Small but
opens wide!



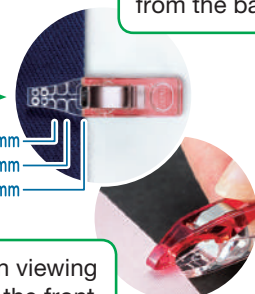
Narrow tip with 4
projections to clip tightly!

A guide scale which can estimate seam allowances
in units of 5mm, 7mm and 10mm

- Precision clipping.
- Small and light.
- Works well with sergers.
- As a marking for pieces of fabric.
- Comes with a 5/7/10mm scale.

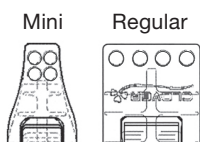
The back of the clip is flat, keeping the fabric down, for
easy feeding into the presser foot

When viewing
from the back



Clips can be aligned
with notch marks

When viewing
from the front



Though small, the Mini Wonder
Clips have the same number of
projections and clipping power as
the regular Wonder Clips.

Mini Wonder Clips

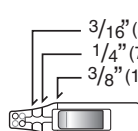
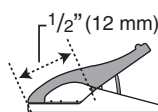
3188



3189



- Great alternative to pins, especially when working with vinyls, piles, and heavy weight fabrics.
- The small size works well with miniature patchwork, doll clothes, and all work that requires holding pieces together in tight sections.
- It is helpful when holding a curved line or for a short distance.
- Easy to see on your work and easy to find when dropped to the floor.



3188

Mini Wonder Clips
(20 pcs.)



20 pcs./pack

3 packs/box

Package Size

19 x 8 x 1.5 cm

3189

Mini Wonder Clips
(Assortment/50 pcs.)



50 pcs./pack

3 packs/box

Package Size

15 x 7.7 x 3.3 cm



Wonder Clips

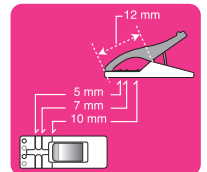
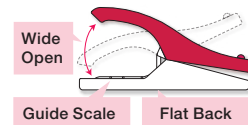
All you have to do is clip it on and off



Wonder Clips

- Great alternative to pins, especially when working with vinyls, piles, and heavy weight fabrics.
- Holds layered sections of sewing projects such as, handle connectors to handbags, piping, etc. without distortion.
- Holds quilt binding while sewing.
- Easy to see on your work and easy to find when dropped to the floor.
- Works well with sergers.

Maximum
10mm



Seam allowance can be estimated in units of 5mm, 7mm and 10mm.

3155



3180



3185



3155

Wonder Clips
(10 pcs.)



3180

Wonder Clips
(Neon Green/10 pcs.)



3185

Wonder Clips
(Assortment/10 pcs.)



10 pcs./pack	3 packs/box
Package Size	18.7 x 8 x 2 cm



3155/3156/3159



3180/3181



3183/3185

Dressmaking requires many pins.

3156



3181



3183



3156

Wonder Clips
(50 pcs.)



3181

Wonder Clips
(Neon Green/50 pcs.)



50 pcs./pack	3 packs/box
Package Size	15 x 7.5 x 3.5 cm

3183

Wonder Clips
(Assortment/50 pcs.)



Wonder Clips

Perfect for dressmaking which requires many pins to hold fabrics together.

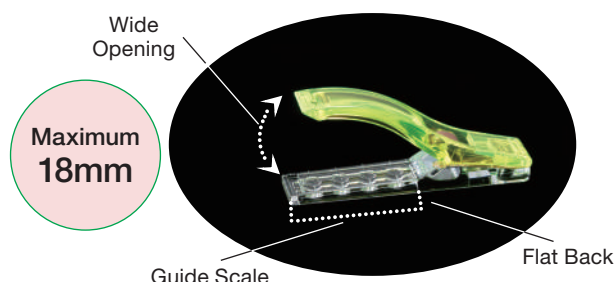


3159	
Wonder Clips (100 pcs.)	
100 pcs./pack	3 packs/box
Package Size	21.5 x 12 x 5 cm

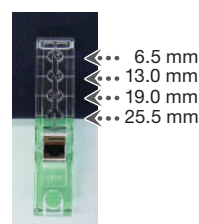


Jumbo Wonder Clips

The clips are useful in holding laminated fabrics, synthetic leathers and other fabrics on which you do not wish to leave holes.
The wide opening of the clips are also suitable for holding thick fabrics and zippers.



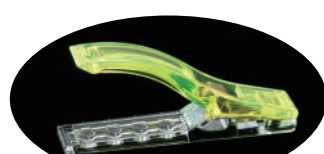
- Clip opens wide to hold layers of fabrics.
- Each clip can hold a length of up to 3cm.
- These clips are convenient for holding wide seam allowances, pouch openings and handles.
- These can be used for patchwork, quilt, knitting and other various handicrafts.
- Flat back for keeping fabrics down, making it easy to use on sewing machines.



3186	
Jumbo Wonder Clips (12 pcs.)	
12 pcs./pack	3 packs/box
Package Size	20 x 10 x 4 cm
3157	
Jumbo Wonder Clips (24 pcs.)	
3182	
Jumbo Wonder Clips (Neon Green/24 pcs.)	
24 pcs./pack	3 packs/box
Package Size	21.5 x 12 x 5 cm



3186/3157



3182

Bag & Totes Accessories



Black Nickel

6180
D-Rings
(20 mm) Antique Gold

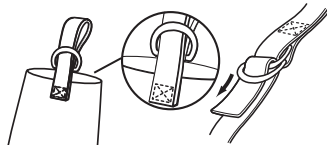
6181
D-Rings
(20 mm) Black Nickel

6182
D-Rings
(30 mm) Antique Gold

6183
D-Rings
(30 mm) Black Nickel

2 pcs./pack	3 packs/box
Package Size	5.3 x 10.5 x 0.6 cm

Material: Zinc



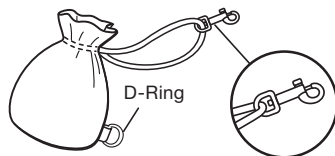
The length of strap can be adjusted by pulling the strap in the direction indicated by arrow.



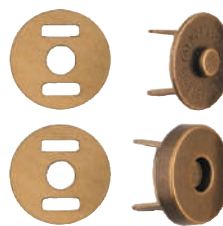
6192
Swivel Ring
(20 mm) Antique Gold

1 pc./pack	3 packs/box
Package Size	5.3 x 10.5 x 0.8 cm

Material: Plated Iron



Works well with D-Ring and O-Ring.



Antique Gold

6240
Magnetic Snap Closures
(14 mm) Antique Gold

6241
Magnetic Snap Closures
(14 mm) Black Nickel

1 set/pack	3 packs/box
Package Size	6 x 10.5 x 1.5 cm

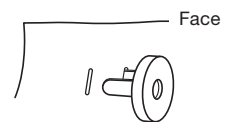
6244
Magnetic Snap Closures
(18 mm) Antique Gold

6245
Magnetic Snap Closures
(18 mm) Black Nickel

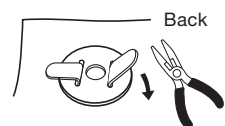
1 set/pack	3 packs/box
Package Size	6 x 10.5 x 2 cm

Material: Plated Iron, Magnet

1. Make two small cuts in material and insert closure tabs.



2. Insert back closure on back of material and fold tabs out.

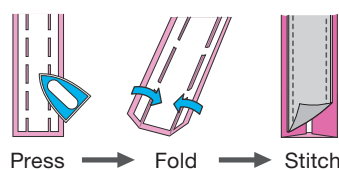


Bag & Totes Accessories

Create straps & handles with ease!



9510 Create-a-Strap (15 mm x 2 m) with NANCYZIEMAN®	
9511 Create-a-Strap (30 mm x 2 m) with NANCYZIEMAN®	
1 pc./pack	3 packs/box
Package Size	21 x 7 x 0.9 cm



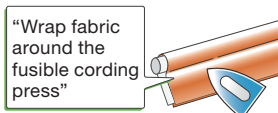
- Precut, perforated strap interfacing.
- Ideal for quickly creating straps and handles.
- Use with light-medium weight fabrics.

Create piping in minutes!

- Unique feature — cording is covered with fusible web.
- Create coordinating piping in minutes!
- Use with light-medium weight fabrics.

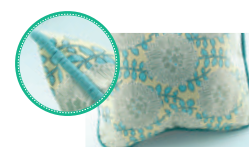


9512 Wrap 'n Fuse Piping (4 mm x 2 m) with NANCYZIEMAN®	
1 pc./pack	3 packs/box
Package Size	21 x 7 x 0.9 cm

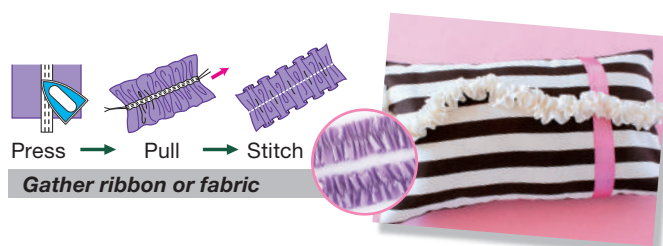


9517 Wrap 'n Fuse Piping (9 mm x 2 m) with NANCYZIEMAN®	
1 pc./pack	3 packs/box
Package Size	33.5 x 7 x 3.2 cm

9518 Wrap 'n Fuse Piping (9 mm x 5.5 m) with NANCYZIEMAN®	
1 pc./pack	3 packs/box
Package Size	43 x 8.5 x 5 cm



Iron-on tape makes gathering and ruffles easy!



- Use Fuse 'n Gather when the pattern calls for gathers, ruffles, and gathered trim.
 - Eliminate the needed to easy gathering stitches.
- "Use Fuse 'n Gather for fast and easy way to gather and ruffle!"
–Nancy Zieman

9526 Fuse 'n Gather Fusible Gathering Tape (15 mm x 5.5 m) with NANCYZIEMAN®	

9527 Fuse 'n Gather Fusible Gathering Tape (15 mm x 13.7 m) with NANCYZIEMAN®	
1 pc./pack	3 packs/box
Package Size	21 x 7 x 0.8 cm

Slash Cutter

Make beautiful slash quilts quickly!



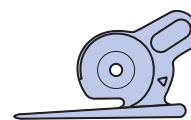
499	
Slash Cutter	
1 set/pack	3 packs/box
Package Size	22.2 x 9.9 x 1.7 cm

Comes with two interchangeable guides; for straight slash cutting and curved slash cutting. Designed with comfort and safety features!

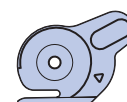
*This cutter only supports Clover's replacement blades.



Straight slash cutting



Curved slash cutting



Quilting method with beautiful layers of colour and soft texture

Making slash quilting fun, beautiful and easy.

Slash quilting is a method of quilting. In this method, multiple layers of fabric are arranged on top of a base fabric and are sewn parallel to the true bias direction. Then, seams of all layers but the bottom layer are cut through and washed, and the fabric of the openings is raised.

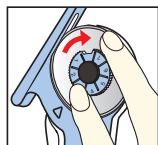
Slash quilting is known for its beautiful layers of colour and soft texture.

Slash quilting can be done easily and quickly with Clover's Slash Cutter.

Features of Clover Slash Cutter

The ratchet mechanism to firmly fix the blade in place

The ratchet mechanism to prevent the blade from rotating when it is being pushed. As the blade doesn't rotate, the fabric won't get caught in between the blade and the guide, allowing for smooth cutting of several layers of fabric.



16-step pitch feeding to maintain cutting quality

Turn 1 pitch once the blade becomes dull to improve cutting quality. It is designed so that it is easy to tell when to replace the blade.

The cutter comes with a guides for both straight/curved

It works with both types of slash quilts by switching the interchangeable guides. Both for stitching intervals wider than 6mm.

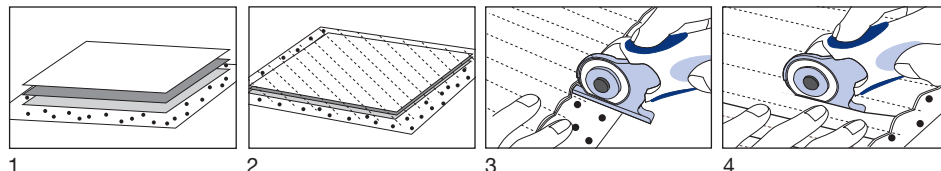


Insert into a channel between two stitching lines and push forward.



Fabric will be cut as you push the cutter forward.

<Basic technique of slash quilting and how to use a Slash Cutter>



1. Layer pieces of fabric so that the fabric grain is aligned.
Select a piece of fabric that has a surface which raises easily as the middle layer, and place a larger piece of fabric as the bottom layer for easy cutting.
2. With a sewing machine, make seams with a fixed width in the true bias direction (in a 45 degree angle to the fabric grain).
3. Insert the Slash Cutter guide in between the seams.
(Place the guide on top of the bottom layer.)
4. Hold the fabric down with one hand and push the Slash Cutter forward to cut.
(Make a cut with scissors if it is hard to cut at the beginning)
5. Once all the cutting is done, wash with a washing machine and raise fabric.
Dry and add the finishing touches to complete.



Scissors

Bordeaux Ultimate Scissors/Shears

Innovative technique ensures a fine cut and unsurpassed durability.

These small, portable stainless-steel scissors can smoothly cut thick or multiple layers of fabric. With strong, durable blades and the soft-to-grip handle, the scissors ensures a fine cut.

Bordeaux

• Sharpness and durability

Sharpness and durability are achieved by precision grinding of high quality stainless steel. This allows us to cut thick, dense or multiple layers of fabric easily and with precision.

• Easy-to-grip handle

The easy-to-grip handle is designed to minimize the fatigue associated with numerous or long cuts. The handle is ambidextrous.

• Durable blades

Scissors with highly durable blades made of high-quality stainless steel treated with a hardening process.

Genuine leather sheath included



13 cm



17 cm



20 cm

4940	
Bordeaux Ultimate Scissors 130 with NANCYZIEMAN®	
1 pc./pack	3 packs/box
Package Size	24 x 9.6 x 1.3 cm

Superior quality for scissors of this size.
Turn around easily with small blades.

4941	
Bordeaux Ultimate Scissors 170 with NANCYZIEMAN®	
1 pc./pack	3 packs/box
Package Size	24 x 9.6 x 1.3 cm

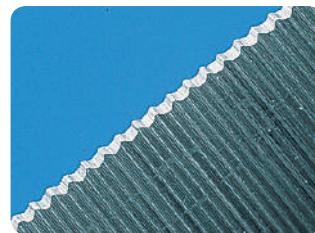
Handy size.
Fine cuts even when aligning piece cuts and seam allowances.

4942	
Bordeaux Ultimate Shears 200 with NANCYZIEMAN®	
1 pc./pack	3 packs/box
Package Size	27 x 10.2 x 1.7 cm

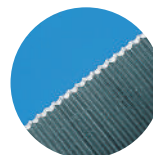
Powerful scissors for all kinds of purposes. There's no need to worry about the types of fabric or their thickness.

Patchwork Scissors

The finely serrated blades will grip the fabric firmly for a precision cut. Perfect for cutting multiple layers of fabric as well as quilt batting.



Made from top-grade stainless steel, sharp and durable excellent for cutting multiple layers of fabric.



24 cm



493/L

**Patchwork Scissors
(Large)**



0 51221 52247 5

1 pc./pack

3 packs/box

Package Size

29.5 x 10.3 x 1.3 cm



17 cm



493

Patchwork Scissors



0 51221 52245 1

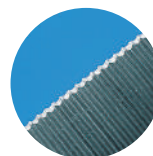
1 pc./pack

3 packs/box

Package Size

23.3 x 8.3 x 1.2 cm

Perfect for cutting multiple layers of fabric or cutting pieces for quilting. A cover is included for safe and easy handling and storage.



13.5 cm



493/S

**Patchwork Scissors
(Small)**



0 51221 52246 8

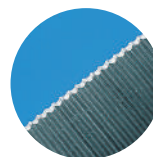
1 pc./pack

3 packs/box

Package Size

18.5 x 6.5 x 1.2 cm

Perfect for cutting appliqué pieces for quilting and sewing.



Perfect for fine cutting.



11.5 cm



493/CW

**Patchwork Scissors
(Mini)**



0 51221 52249 9

1 pc./pack

3 packs/box

Package Size

18.5 x 7.5 x 1.1 cm

The pointed tip is perfect for fine cutting and trimming. Used for chenille quilting, appliqué, sewing and crafts. Heavy duty blades make it easy to cut through several layers of fabric.



Rotary Cutters

Perfect cutter for patchwork requiring accuracy

Rotary cutters are the ultimate in simplicity and functionality.
Fits into your hand perfectly and allows for accurate and speedy cuts.

Features of Clover Rotary Cutter

Hold upright



At an angle



• Cuts beautifully regardless of how you hold it

Cuts beautifully regardless of how you hold it, whether held upright or at an angle as the cover opens at a tilt, due to the wide cutting range with just the right amount of blade exposed.

• An easy grip handle that fits into your hand perfectly

The "Soft Cushion Handle" gently supports your palm and fingers for a comfortable cutting experience.

For speedy and accurate cuts with a cutter that fits into your hand perfectly.

*Can be used for both left and right handed users

Can be used by both right and left hand by simply turning the safety cover around.

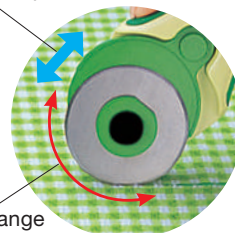
*The cutter is initially set to right-hand use.

• Adjustable rotation speed

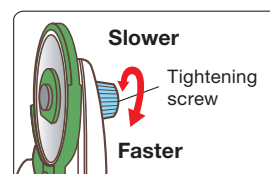
Rotation speed can be adjusted with the tightening screw at the back.

The blade will rotate slower when the screw is tightened allowing for cutting thick or multiple layers of fabric beautifully.

Cover opens at a tilt!



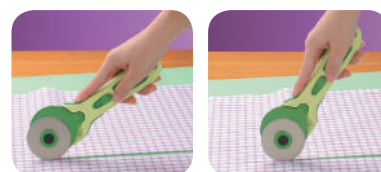
Wide cutting range



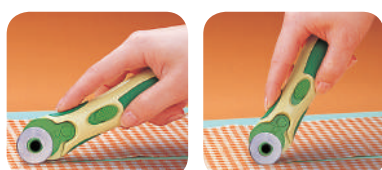
7500	
Rotary Cutter (45 mm)	
1 pc./pack	3 packs/box
Package Size	23 x 12 x 3 cm



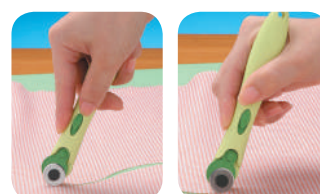
7502	
Rotary Cutter (60 mm)	
1 pc./pack	3 packs/box
Package Size	27 x 12 x 3.5 cm



7501	
Rotary Cutter (28 mm)	
1 pc./pack	3 packs/box
Package Size	23 x 10.5 x 3 cm



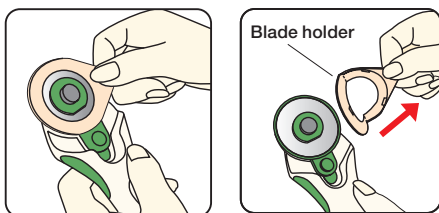
7503	
Rotary Cutter (18 mm)	
1 pc./pack	3 packs/box
Package Size	23 x 8 x 2 cm





Rotary Cutter Blades

Clover Rotary Blade Refills make blade replacement safe, quick and easy.



Blades come in a protective cover for safe handling.



45 mm

7508	
Clover Rotary Blade Refill (45 mm/1 pc.)	
1 pc./pack	3 packs/box
Package Size	16 × 7 × 0.3 cm



60 mm

7510	
Clover Rotary Blade Refill (60 mm/1 pc.)	
1 pc./pack	3 packs/box
Package Size	20 × 8.5 × 0.5 cm



28 mm

7514	
Clover Rotary Blade Refill (28 mm/2 pcs.)	
2 pcs./pack	3 packs/box
Package Size	16 × 7 × 0.3 cm



18 mm

7512	
Clover Rotary Blade Refill (18 mm/2 pcs.)	
2 pcs./pack	3 packs/box
Package Size	16 × 7 × 1.4 cm



45 mm

7509	
Clover Rotary Blade Refill (45 mm/5 pcs.)	
5 pcs./pack	3 packs/box
Package Size	16 × 8 × 1.8 cm



60 mm

7511	
Clover Rotary Blade Refill (60 mm/5 pcs.)	
5 pcs./pack	3 packs/box
Package Size	20 × 9.5 × 1.8 cm



28 mm

7515	
Clover Rotary Blade Refill (28 mm/5 pcs.)	
5 pcs./pack	3 packs/box
Package Size	16 × 7 × 1.4 cm

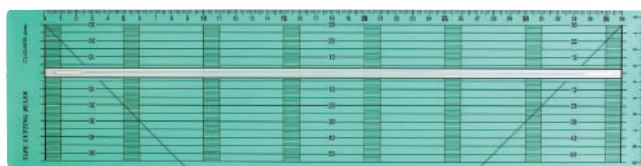


18 mm

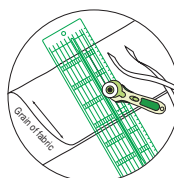
7513	
Clover Rotary Blade Refill (18 mm/5 pcs.)	
5 pcs./pack	6 packs/box
Package Size	16 × 7 × 1.4 cm

Cutting Mat

Bias Tape Cutting Ruler



The Bias Tape Cutting Ruler and the Rotary Cutter enable you to cut fabric strips accurately and exactly parallel. Set the blade of the Rotary Cutter in the slit (wide end) of the Bias Tape Cutting Ruler to cut fabric straight without curving.



🇯🇵 Japanese Package

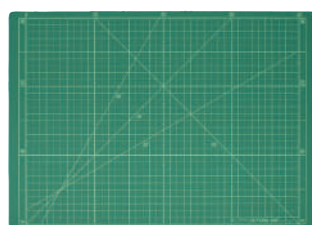
57-924

Bias Tape Cutting Ruler
●mm Gauge



1 pc./pack	5 packs/box
Package Size	43.5 x 11 x 0.4 cm

Cutting Mat



30 x 40 cm

4060

Cutting Mat
●mm Gauge



1 pc./pack	6 packs/box
Package Size	48 x 32 x 0.2 cm



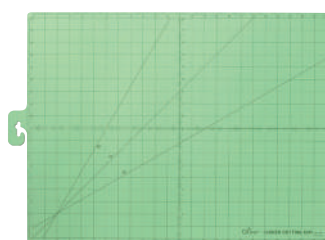
7520

7520

Cutting Mat (12" x 18")
●Inch Gauge



6 pcs./box
Size
36 x 32 x 0.2 cm



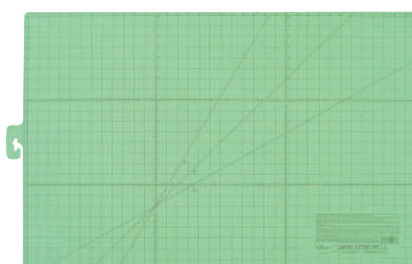
7521

7521

Cutting Mat (18" x 24")
●Inch Gauge



6 pcs./box
Size
67 x 48 x 0.2 cm



7522

7522

Cutting Mat (24" x 36")
●Inch Gauge



6 pcs./box
Size
97 x 63 x 0.2 cm

3 functions of marking units, cutting mat, ironing board all in one.



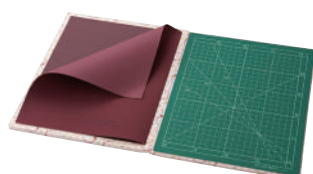
🇯🇵 Japanese Package

57-872

Patchwork Board "MULTI"
●mm Gauge

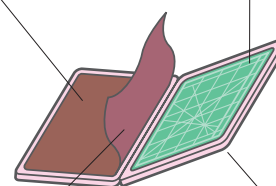


1 pc./pack	5 packs/box
Package Size	34 x 27 x 2.5 cm



Sandpaper: Easy for marking lines and patterns on fabric, as it prevents it from slipping.

Cutting mat with grid marks(cm) and angle lines.



Anti-skid sheet: Holds the ironing board in place and protects the work surface.

Outside(fabric covered): Ironing Board

Tape Makers

Meshwork



Celtic Quilt



Bias Tape Makers

You can make bias tapes in minutes!

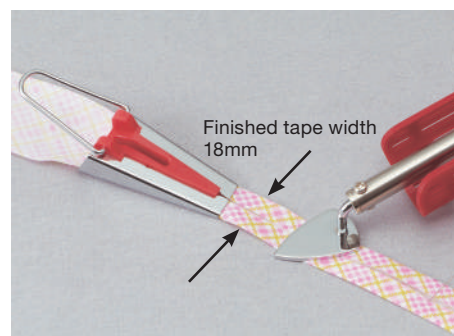
You can quickly make bias tapes of the same width using the same fabric for belt loops and the piping finishing of armholes and necklines.

How to use:

- (1) Cut the fabric according to size.
- (2) Insert the fabric through the tape maker.
- (3) Pin the fabric edge and iron the folded tape as you pull the tape maker.



464/06 464/12 464/18 464/25 464/50
6 mm 12 mm 18 mm 25 mm 50 mm



Finished tape width 18mm
Insert the fabric through the bias tape maker and iron.

464/06 Bias Tape Maker (6 mm)	
1 pc./pack	3 packs/box
Package Size	17 x 7.5 x 2.1 cm

464/12 Bias Tape Maker (12 mm)	
1 pc./pack	3 packs/box
Package Size	17 x 7.5 x 2.6 cm



464/18 Bias Tape Maker (18 mm)	
1 pc./pack	3 packs/box
Package Size	17 x 7.5 x 2.6 cm

464/25 Bias Tape Maker (25 mm)	
1 pc./pack	3 packs/box
Package Size	17 x 7.5 x 2.6 cm

464/50 Bias Tape Maker (50 mm)	
1 pc./pack	3 packs/box
Package Size	17 x 7.5 x 4 cm

Tape Makers

Fusible Bias Tape Makers

From Celtic Quilt appliqué to temporary piping tapes, this tape maker will expand the creativity of your work.

How to use:

- (1) Insert the Fusible Web (Heat Adhesive Tape) in the upper groove.
- (2) Insert bias cut fabric in the lower groove.
- (3) Pull both materials at the same time and iron.
- (4) Remove the adhesive tape and apply.



Finished tape width 9mm



4011	
Fusible Bias Tape Maker (6 mm)	

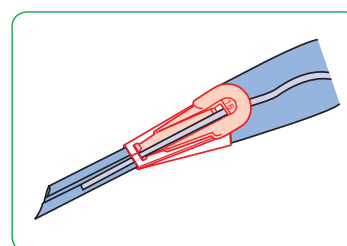
1 pc./pack	3 packs/box
Package Size	16 x 7 x 2.3 cm



4012	
Fusible Bias Tape Maker (9 mm)	

1 pc./pack	3 packs/box
Package Size	16 x 7 x 2.6 cm

By using a 5mm-wide Fusible Web with this 18mm-wide tape maker, you can make bias tapes for piping which can baste fabric.



*You can also make bias tapes without heat adhesive tapes.



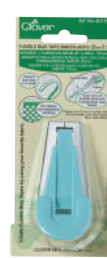
4013	
Fusible Bias Tape Maker (12 mm)	

1 pc./pack	3 packs/box
Package Size	16 x 7 x 3.1 cm



4014	
Fusible Bias Tape Maker (18 mm)	

1 pc./pack	3 packs/box
Package Size	16 x 7 x 3.1 cm



4015	
Fusible Bias Tape Maker (25 mm)	

1 pc./pack	3 packs/box
Package Size	16 x 7 x 4.1 cm

Fusible Web

This tape is convenient for holding Celtic quilt, stained glass quilt and appliqué in place.



4041	
Fusible Web (5 mm width/25 m roll)	

1 pc./pack	3 packs/box
Package Size	14.5 x 11 x 0.8 cm



4042	
Fusible Web (10 mm width/12 m roll)	

1 pc./pack	3 packs/box
Package Size	14.5 x 11 x 1.3 cm

Release paper



The Fusible Web

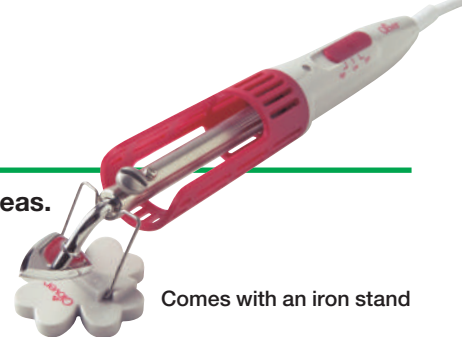
The Fusible Web is a heat adhesive tape in the shape of a spider web that will keep the fabric soft and maintain its touch.

Width of the corresponding Fusible Web
6/9mm width: 5mm
12/18/25mm width: 10mm

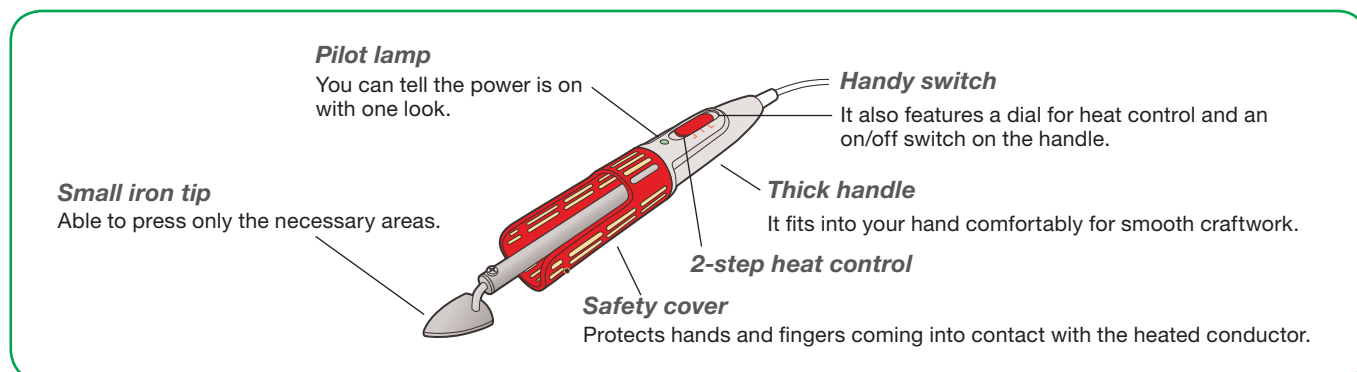
Mini Iron & Accessories

This small, light iron is very easy to handle and can be used to press small areas.

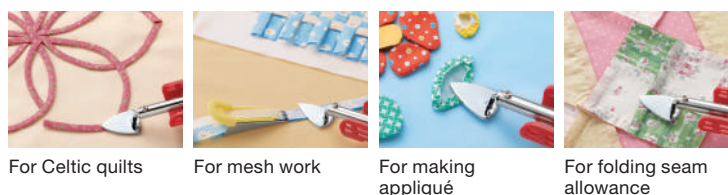
It features a safety cover and switch on the handle to protect hands and fingers.



Comes with an iron stand



Convenient not only for patchwork and quilt but also for sewing and other various handicrafts.



* The Mini Iron II and related accessories can only be sold to customers living in the above-mentioned countries.

8003EU	
Mini Iron II™ "The Adapter" (EU Version)	
1 set/pack	3 packs/box
Package Size	38 x 13 x 3.5 cm

8004GB	
Mini Iron II™ "The Adapter" (UK Version)	
1 set/pack	3 packs/box
Package Size	38 x 13 x 3.5 cm

8005	
Mini Iron II™ "The Adapter" (AUS & NZ Version)	
1 set/pack	3 packs/box
Package Size	38 x 13 x 3.5 cm

Interchangeable tips are sold separately

Mini Iron II has special interchangeable tips that can be used for Quilting, Sewing and Crafting. The Mini Iron II has four adaptable tips to be used for doll making, paper crafting and hard to reach corners.



The Large Tip works well on large projects.

The Ball Tip is used for Doll Making and General Crafting.

The Slim Line Tip is perfect for working on seams or fabric folding projects.

9103	
Adapter Iron Tip (Large)	
9104	
Adapter Ball Tip	
9105	
Adapter Slim Line Tip	
1 pc./pack	3 packs/box
Package Size	19 x 7 x 1 - 3.2 cm

Trace 'n Create Quilt Templates with Nancy Zieman

"Whether making traditional or super-sized quilt blocks, the new Trace 'n Create Quilt Template collections make the patchwork painless."

–Nancy Zieman

Dresden Plate & Fan Collection

"The time-honored Dresden quilt block can be super-sized with ease. One large block creates a dramatic table topper. Give it a try!" –Nancy Zieman



9514

Trace 'n Create Quilt Templates
WITH NANCY ZIEMAN®
Dresden Plate & Fan Collection



1 set/pack	3 packs/box
Package Size	53 x 23.5 x 0.6 cm



Dresden Fan Block (6 sizes): 152 mm, 203 mm, 305 mm, 406 mm, 457 mm, 508 mm



Dresden Plate Block (6 sizes): 305 mm, 406 mm, 610 mm, 813 mm, 914 mm, 1,016 mm

Carefree Curves Collection—Traditional to Super-Sized Blocks

Note From Nancy: These templates create curved designs from squares and rectangles — it's magic!

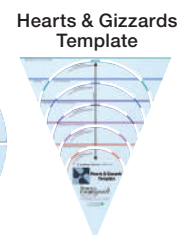
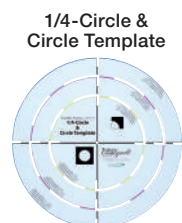


9578

Trace 'n Create Quilt Templates
(Carefree Curves Collection)
with NANCY ZIEMAN®



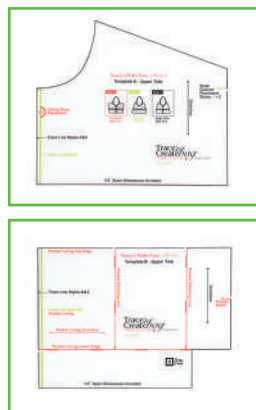
1 set/pack	3 packs/box
Package Size	34 x 30 x 0.4 cm



Trace'n Create Bag Templates with Nancy Zieman

Nancy's Hobo Tote Collection

Note from Nancy: Showcase fabrics from a fat quarter collection, or a single sensational print, in this easy-new tote.



9576
 Trace 'n Create Bag Templates
 Nancy's Hobo Tote Collection
 with NANCY ZIEMAN®

1 set/pack	3 packs/box
Package Size	34.2 x 28.5 x 0.3 cm



Fat-Quarter Style



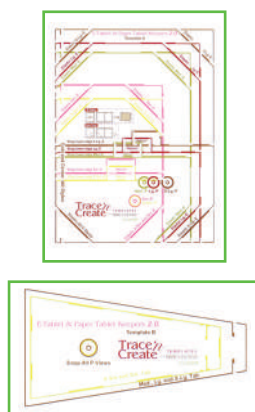
Single-Fabric Style



Two-Fabric Style

E-Tablet & Paper Tablet Keepers 2.0

Note from Nancy: Create personalised tablet keepers for paper or electronic tablets such as Kindle Fire, Kindle 2nd Generation, Samsung Galaxy Tab and more. Now you can write, read or e-mail in style!



9577
 Trace 'n Create Templates
 E-Tablet & Paper Tablet Keepers 2.0
 with NANCY ZIEMAN®

1 set/pack	3 packs/box
Package Size	34.5 x 25.8 x 0.3 cm



Paper Tablet Keeper



E-Tablet Keeper



Both Styles 5 Different Sizes

Embroidery Stitching Tools

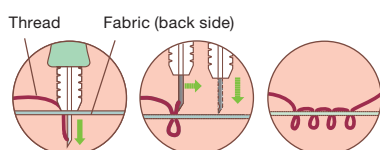
Embroider easily by simply thrusting the needle into the fabric!

Enjoy perfectly aligned stitches.



8800	
Embroidery Stitching Tool	
1 set/pack	3 packs/box
Package Size	18.5 x 9.5 x 2 cm

*Package includes Embroidery Stitching Tool, one 3-ply needle and one needle threader.



Make a variety of stitches by thrusting the needles into the fabric in the same way.

Back stitch



Thrust the needle into the fabric surface.
Thrust needle in the direction of stitching.

Satin stitch



Thrust the needle into the fabric surface.
Thrust needle as if filling the surface.

Loop stitch



Thrust needle from the back of the fabric.
Thrust needle while enjoying the three-dimensional look.

Velvet-like



Thrust needle from the back of the fabric.
Cut the end of the loop with scissors.



Place the fabric with the design in an embroidery hoop and stitch with a needle as if you draw a picture.



8801	
Embroidery Stitching Tool Needle Refill (Single Ply Needle)	
1 pc./pack	3 packs/box
Package Size	18.5 x 5.5 x 0.8 cm

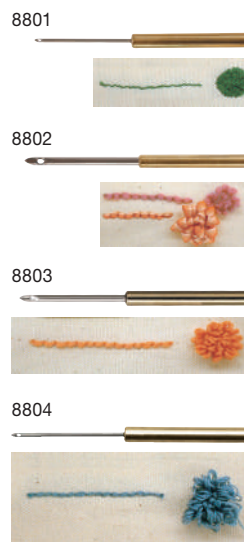
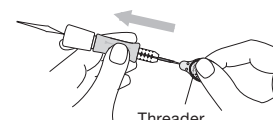
8802	
Embroidery Stitching Tool Needle Refill (Needle for Medium-Fine Yarn)	
1 pc./pack	3 packs/box
Package Size	18.5 x 5.5 x 0.8 cm

8803	
Embroidery Stitching Tool Needle Refill (6 Ply Needle)	
1 pc./pack	3 packs/box
Package Size	18.5 x 5.5 x 0.8 cm

8804	
Embroidery Stitching Tool Needle Refill (3 Ply Needle)	
1 pc./pack	3 packs/box
Package Size	18.5 x 5.5 x 0.8 cm

8810	
Embroidery Stitching Tool Needle Threader	
2 pcs./pack	3 packs/box
Package Size	20.3 x 4.5 x 0.5 cm

Convenient threader for the Embroidery Stitching Tool.



Embroidery Stitching Tools

Perfect for Embroidery Stitching.

Inner hoop grips the fabric firmly, keeping it tight.

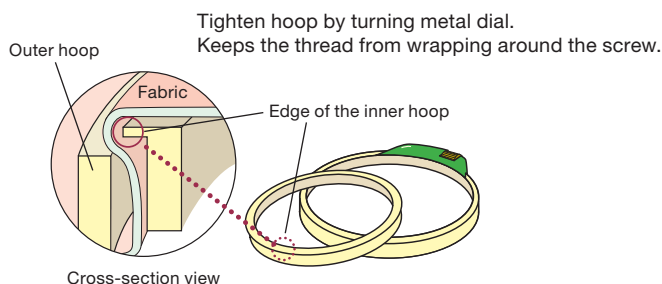


8812	
Clover Embroidery Hoop (18 cm)	
1 pc./pack	3 packs/box
Package Size	23 × 19 × 1.6 cm

8813	
Clover Embroidery Hoop (12 cm)	
1 pc./pack	3 packs/box
Package Size	22 × 13 × 1.4 cm



The Clover Embroidery Hoop consists of an inner and outer hoop.



"Kantan Couture " Bead Embroidery Tools

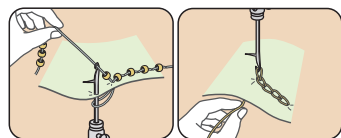


This old art of embroidery using a fine hook on a fine cloth stretched in frame is called "Tambour", reborn with Clover's "Kantan Couture " Bead Embroidery Tool.

Basic techniques with this tool can create beautiful motifs using sequins and beads. Embellish/Design and make it your own. Your imagination possibilities are endless.



9900	
"Kantan Couture " Bead Embroidery Tool	
1 set/pack	3 packs/box
Package Size	22 × 6.5 × 2.2 cm



Beads and sequins are easily applied. Chain-stitching is a breeze.



9901	
"Kantan Couture " Bead Embroidery Tool Needle Refill	
1 pc./pack	6 packs/box
Package Size	14 × 5.5 × 0.4 cm

Replacement needle exclusively for Bead Embroidery Tool. Easy replacement with a screw on the handle.



9902	
"Kantan Couture " Bead Embroidery Tool Thread (Gold)	
1 pc./pack	3 packs/box
Package Size	11.5 × 5.5 × 2.5 cm



Gold

9904	
"Kantan Couture " Bead Embroidery Tool Thread (Clear)	
1 pc./pack	3 packs/box
Package Size	11.5 × 5.5 × 2.5 cm



Clear

“QUICK” Yo-Yo Makers

Quick and easy Yo-Yo Maker templates!

“QUICK” Yo-Yo Makers allow you to make evenly spaced stitches to create beautiful gathers. Fold the seam allowance, rounding off to make a nicely shaped yo-yo.



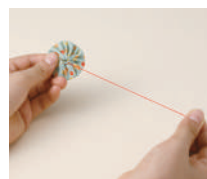
Place the fabric between the plates and cut off the seam allowance leaving 3-5mm.



Stitch following the holes in the plates.



Remove the plates and gather the thread.



Gather tightly, knot the end and hide it by placing it inside.



Round off to a nice shape and voila!



8702
“QUICK” Yo-Yo Maker (Extra Small)

1 set/pack	3 packs/box
Package Size	22 × 10.5 × 1 cm



Finished size:
Approx. 20 mm



8700
“QUICK” Yo-Yo Maker (Small)

1 set/pack	3 packs/box
Package Size	22 × 10.5 × 1 cm

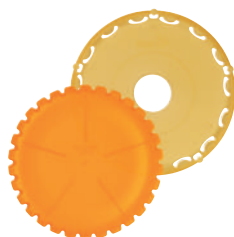


Finished size:
Approx. 30 mm



8701
“QUICK” Yo-Yo Maker (Large)

1 set/pack	3 packs/box
Package Size	22 × 12 × 1 cm



Finished size:
Approx. 45 mm



8703
“QUICK” Yo-Yo Maker (Extra Large)

1 set/pack	3 packs/box
Package Size	22 × 14.5 × 1 cm

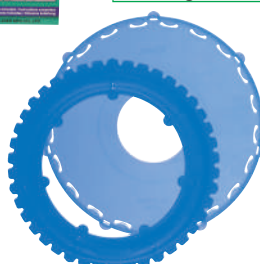


Finished size:
Approx. 60 mm



8708
“QUICK” Yo-Yo Maker (Jumbo)

1 set/pack	3 packs/box
Package Size	23 × 19 × 1.5 cm



Finished size:
Approx. 90 mm



8706
“QUICK” Yo-Yo Maker (Flower-Shape/Small)

1 set/pack	3 packs/box
Package Size	22 × 12 × 1 cm



Finished size:
Approx. 35 mm

"QUICK" Yo-Yo Makers



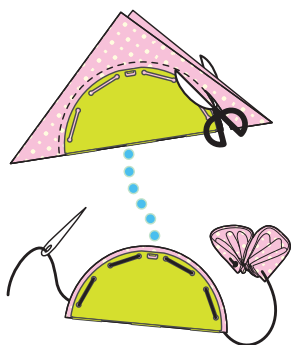
8705	
"QUICK" Yo-Yo Maker (Heart-Shape/Large)	
1 set/pack	3 packs/box
Package Size	22 x 12 x 1 cm



Kanzashi Flower Makers

Simply set, cut and sew to create beautiful Kanzashi Flowers!

Kanzashi is a traditional Japanese art form of folding and stitching fabric petals for use in beautiful hair adornments.



8484	
Kanzashi Flower Maker (Gathered Petal/Small Size)	
1 pc./pack	3 packs/box
Package Size	22 x 10.2 x 0.7 cm



8485	
Kanzashi Flower Maker (Gathered Petal/Large Size)	
1 pc./pack	3 packs/box
Package Size	22 x 11.2 x 0.7 cm



8483	
Kanzashi Flower Maker (Pointed Petal/Large Size)	
1 pc./pack	3 packs/box
Package Size	22 x 11.2 x 0.7 cm



8486	
Kanzashi Flower Maker (Orchid Petal/Small Size)	
1 pc./pack	3 packs/box
Package Size	22 x 10.2 x 0.7 cm



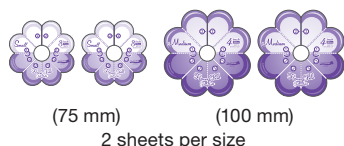
8487	
Kanzashi Flower Maker (Orchid Petal/Large Size)	
1 pc./pack	3 packs/box
Package Size	22 x 11.2 x 0.7 cm

Flower Frill Templates



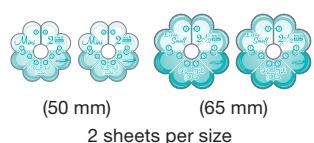
4 sheets/pack	3 packs/box
Package Size	22 x 11.5 x 0.3 cm

Approx. Finished sizes & Contents



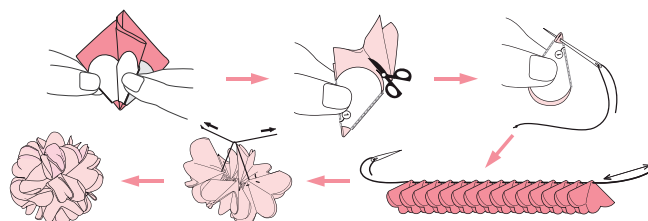
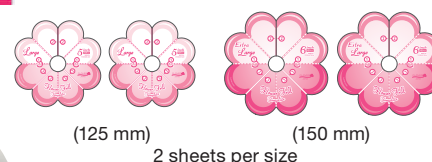
4 sheets/pack	3 packs/box
Package Size	22 x 11.5 x 0.3 cm

Approx. Finished sizes & Contents



4 sheets/pack	3 packs/box
Package Size	22 x 16 x 0.3 cm

Approx. Finished sizes & Contents



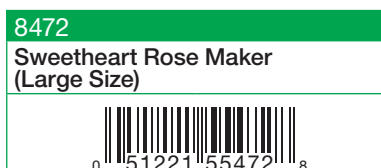
Sweetheart Rose Makers

A magical plate that helps you create beautiful roses with a few twists.

Create elegant rosettes perfect for wedding decorations, home decor accessories and ready to wear. The Sweetheart Rose Maker comes with patterns and hair pin. Pattern can be used over and over again.



- Finished size: Approx. 6 cm



1 set/pack	3 packs/box
Package Size	22 x 14 x 1.2 cm




Wonder Knitter

The sweet old spool knitting has come back in a cute design!

The Wonder Knitter is extremely easy to use and you'll never get tired of knitting!

The rotating disk makes knitting easy and fast. A variety of materials can be used, such as beads and nylon string.



3101	
Wonder Knitter™	
	
1 set/pack	3 packs/box
Package Size	22 x 12.4 x 5.5 cm



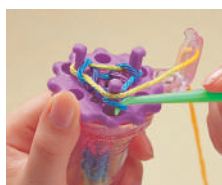
The secret of easy knitting is the rotating disc

Turn the disc and the thread will automatically come into place. No need to adjust thread position and tension for easy knitting.



Contents

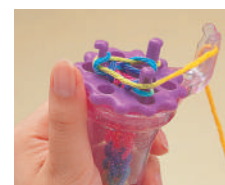
- Main body: 1 pc.
- Crochet Hook: 1 pc.
- 3-peg Head: 1 pc.
- 6-peg Head: 1 pc.



Pick up lower stitch.



Hook over upper yarn onto pin.



Rotate disk and continue.


Change the disc with just one touch!

Use 3 pins to knit a thin cord and 6 pins to knit a thick cord. Knit cords of two different sizes by changing the disc. Easy and quick knitting!

French Knitter

Create dazzling accessories with beads on nylon, yarns, and embroidery threads.



3100	
French Knitter —Bead Jewelry Maker—	
	
1 set/pack	3 packs/box
Package Size	22 x 12.5 x 3.8 cm

Contents

- Main body: 1 pc.
- Crochet Hook: 1 pc.
- 4-peg Head: 1 pc.
- 5-peg Head: 1 pc.
- 6-peg Head: 1 pc.



3 interchangeable heads included

Flower Looms

Setting a frame on the loom base and mending a thread with the pin are all you need to do make a flower motif!

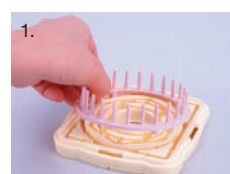
Enjoy making a variety of motifs through many different frames, combinations and ways of binding and mending!



Create beautiful fun-flowers in every season with wool, yarn, ribbon or raffia in different shapes and sizes. The Flower Loom is the perfect embellishing tool for all ages. The flowers can be joined together to make beautiful wearable art, home decor accessories such as pillows, trimmings, and bags.



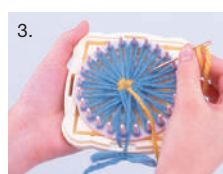
3146	
Flower Loom	
1 set/pack	3 packs/box
Package Size	22 x 13 x 5 cm



1. Set the loom on the base.



2. Wind the yarn around the pegs in a criss-cross fashion.



3. Weave the yarn around each petal to make the center.



4.



Connect motifs to make a bag!



Accentuate your needlework with a corsage!



3139	
Mini Flower Loom	
1 set/pack	3 packs/box
Package Size	22 x 9 x 3 cm

Easily create small embellishments with yarn or thin ribbon.

The mini version is perfect for making motifs for your accessories

Hair Pin Lace Tool

Easily braid scarves, chokers, stoles, and so on.

Change blade width with the pin position.

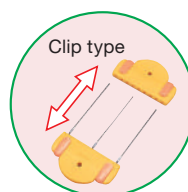
As the ends clip on and off:

You can quickly make long braids without any interruption.

"Hair Pin Lace" is a traditional interwoven braid that can be made using a basic technique known as "single crochet".

Make braid widths: 2 - 8 cm.

You can set every 1 cm.



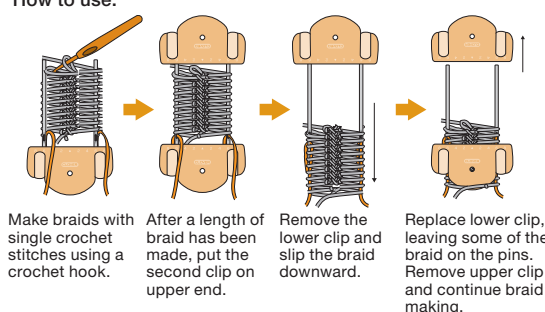
With 3 pins:

Set a third pin in the middle for an even more beautiful braid.

As there are holes in the pin, you can pass other threads through the braid while braiding.

This lace tool can even be used for a variety of purposes, including connecting braids and make gathers.

How to use:



3104	
Hair Pin Lace Tool	
1 set/pack	3 packs/box
Package Size	22 x 15 x 1.8 cm

Pom-Pom Maker

Beautiful Pom-Poms Made Easy



- Open two U-shaped arches together. Wrap a yarn around the arches.
- Follow the same steps with the other side arches. Close the arches. Cut the yarn with a sharp pair of scissors between the two U-shaped arches. Cut the yarn all the way around the circle.
- Take a strand of yarn, slide it through that same crack in which you cut the yarn, tie a knot, and pull it as tight as you can.



3124
Pom-Pom Maker (Small)

2 pcs./pack	3 packs/box
Package Size 22 x 8 x 3 cm	



Finished size:
Approx.
35 mm in
diameter



Finished
size:
Approx.
45 mm in
diameter



3126
Pom-Pom Maker (Large)

2 pcs./pack	3 packs/box
Package Size 22 x 10.5 x 3.5 cm	



Finished size:
Approx. 65 mm
in diameter



Finished size:
Approx. 85 mm
in diameter



3127
Pom-Pom Maker (Extra Small)

2 pcs./pack	3 packs/box
Package Size 16.5 x 7 x 2.5 cm	



Finished size:
Approx. 20 mm
in diameter



Finished size:
Approx. 25 mm
in diameter



3128
Pom-Pom Maker (Extra Large)

1 pc./pack	3 packs/box
Package Size 22 x 14 x 5.5 cm	



Finished size:
Approx. 115 mm
in diameter



Tassel Makers



How to use



Create tassels with your favorite threads!

Easily make tassels with embroidery thread, woolen yarns and others.



9940

Tassel Maker (Small)



1 pc./pack

3 packs/box

Package Size

22 × 14.5 × 2 cm

9941

Tassel Maker (Large)



1 pc./pack

3 packs/box

Package Size

22 × 16 × 2 cm

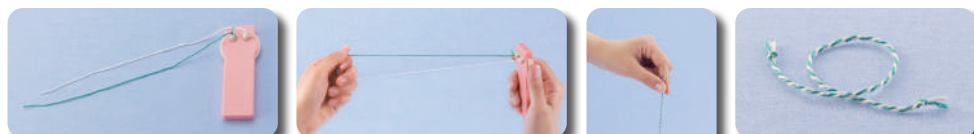
Handy Thread Twister



Twist threads easily and beautifully!

Easily twist threads of any material like embroidery threads.

How to use



9942

Handy Thread Twister



1 pc./pack

3 packs/box

Package Size

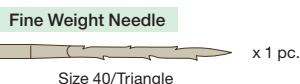
22 × 12.5 × 1.8 cm



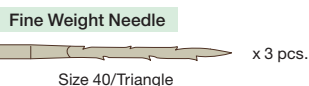
Needle Felting Tools



8902	
Single Needle Felting Tool	
1 set/pack	3 packs/box
Package Size	22 x 9.2 x 1.9 cm



8901	
Pen Style Needle Felting Tool	
1 set/pack	3 packs/box
Package Size	22 x 9.5 x 3.5 cm



8900	
Needle Felting Tool	
1 set/pack	3 packs/box
Package Size	22 x 9.5 x 3.5 cm



8905	
Needle Felting Tool Refill Needle (Fine Weight Needle)	

8906	
Needle Felting Tool Refill Needle (Heavy Weight Needle)	

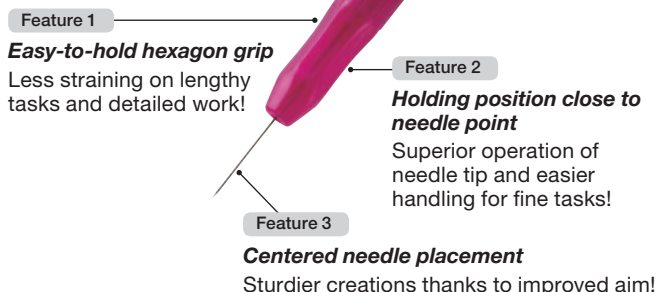
5 pcs./pack	3 packs/box
Package Size	22 x 6 x 1 cm

8907	
Speed Needle Refill	

2 needles/pack	3 packs/box
Package Size	22 x 9 x 1.1 cm



Usable with cap on back
Make the back part easier to hold!



For small and delicate felt projects using 1, 2 or 3 needles.

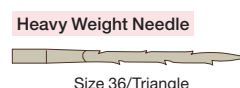
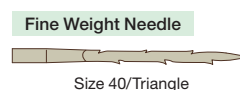
3 needles
For a quick finish

2 needles
For creating lines and outlines

1 needle
For delicate work



No thread or glue needed!
Clover's Needle Felting Tool has five barbed needles that catches the wool roving fibers and pushes them into the bottom of the fabric. The wool roving fibers stay permanently without using glue or sewing it. The tool comes with a clear lock cover for safety and storage.



Replacement needle for Needle Felting Tool, Pen Style Needle Felting Tool and Single Needle Felting Tool.



Replacement needle for Clover Pen Style Needle Felting Tool and Single Needle Felting Tool.

Needle Felting Tools

The brush-like mat enables smooth punching with little resistance, and allows the fibers of the appliqué to become well meshed with the basic fabric.



8910
7 x 9 cm

8910	
Needle Felting Mat (Small)	
1 pc./pack	3 packs/box
Package Size	23 x 14 x 6 cm



For Creating Appliqué

8928	
Needle Felting Appliqué Mold Hedgehog and Mushrooms	
1 pc./pack	3 packs/box
Package Size	22 x 11.5 x 2 cm



8911
8 x 13 cm

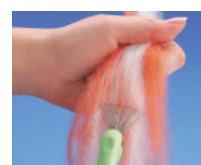
8911	
Needle Felting Mat (Large)	
1 pc./pack	3 packs/box
Package Size	24.8 x 14.5 x 6 cm



8919	
Claw and Mat Cleaner	
1 pc./pack	3 packs/box
Package Size	22 x 9.5 x 3.5 cm



Holds small motifs in the desired position.



Blends wool roving colours together.



Cleans out fibers to the roots of the Needle Felting Mat.

Natural Wool Rovings



100% Wool
Net: approx. 20g

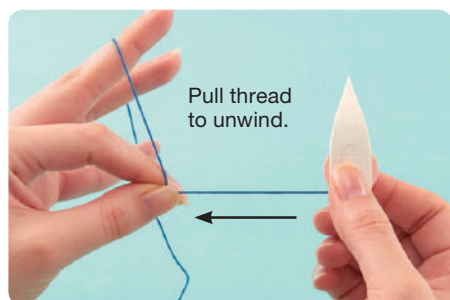
7920-7939	
Natural Wool Roving	
1 pc./pack	3 packs/box
Package Size	18 x 14 x 5.5 cm

For Needle Felting, Pom-Pom Makers and other yarn crafts.

	7920 Off White			7929 Gold	
	7921 Lime Green			7931 Brown	
	7922 Moss Green			7932 Black	
	7923 Blue			7933 Ash	
	7926 Pink			7935 Caramel	
	7927 Red			7939 Light Blue	

Tatting Shuttles

Bobbin style shuttle is here!
Simply pull thread to unwind.



Wind and unwind thread easily without the need to rotate the shuttle. The bobbin turns automatically when a thread is being unwound.



Easily replace threads by removing the bobbin.



8105
Bobbin Tatting Shuttle (White)
0 51221 78105 6



8106
Bobbin Tatting Shuttle (Brown)
0 51221 78106 3

1 set/pack	3 packs/box
Package Size	18.5 x 9.5 x 1.5 cm



8107
Spare Bobbin Set (White)
0 51221 78107 0



8108
Spare Bobbin Set (Brown)
0 51221 78108 7

1 set/pack	3 packs/box
Package Size	18.5 x 8.0 x 1.5 cm

This case can store a set of tatting shuttles and bobbins.



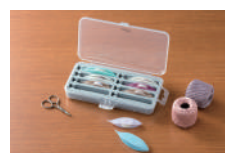
8109
Storage Case for Bobbin Tatting Shuttle
0 51221 78109 4

1 set/pack	3 packs/box
Package Size	21 x 11 x 3.2 cm



8110
Storage Case for Tatting Shuttle
0 51221 78110 0

1 set/pack	3 packs/box
Package Size	21 x 11 x 3.2 cm



Tatting Shuttles



8102 Tatting Shuttle (5 pcs.)	
5 pcs./pack	3 packs/box
Package Size	18.5 x 9 x 1.4 cm



479 Tatting Shuttle	
2 pcs./pack	3 packs/box
Package Size	15.5 x 7.5 x 1.3 cm

* Assorted 2 pcs. from these 5 colours.



8103 Tatting Shuttle (Large/5 pcs.)	
5 pcs./pack	3 packs/box
Package Size	22 x 10.5 x 1.4 cm



8101 Tatting Shuttle (Large)	
2 pcs./pack	3 packs/box
Package Size	18.5 x 9 x 1.4 cm

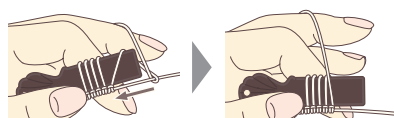


Picot Gauge Set



- A set of 7 (1/2/3/5/7/10/13mm)
- Consecutive picots can be made easily.
- As the gauges have no sharp corners, picots can be beautifully finished with round edges.

8104 Picot Gauge Set	
7 pcs./pack	3 packs/box
Package Size	18.5 x 11 x 0.5 cm



How to make consecutive picots:

Place the thread on the left hand in front of the gauge and make knit stitches. Pull it to the bottom of the gauge and slide it to the previous stitches: then make purl stitches.

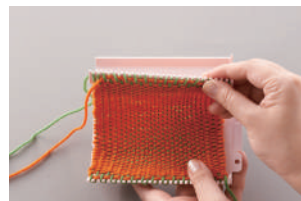
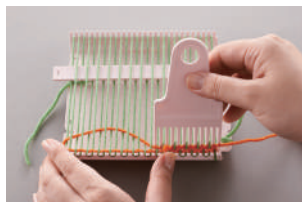
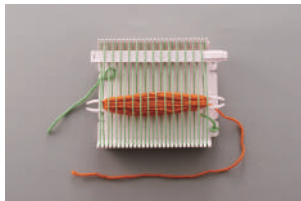


Mini Weaving Looms

Simple and Easy!

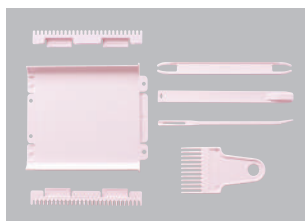
Easily create woven motifs.

Many varieties of motifs result from different warp settings and yarn selections!

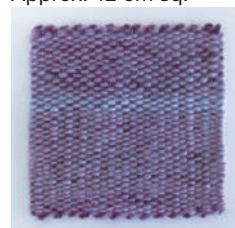


3176
Mini Weaving Loom (Single)

1 set/pack	3 packs/box
Package Size	25.7 x 16.5 x 3.7 cm

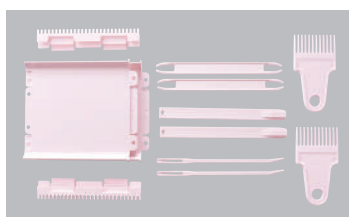


Finished size:
Approx. 12 cm sq.

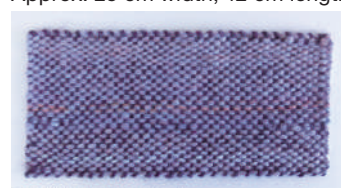


3177
Mini Weaving Loom (Double)

1 set/pack	3 packs/box
Package Size	25.7 x 16.5 x 3.7 cm



Finished size:
Approx. 25 cm width, 12 cm length



*Use the Weaving Loom also as a single.

Mini Beading Loom

The Clover Mini Beading Loom is a portable palmtop beading loom for easy beading. Enjoy making small beadworks with cylinder beads and round beads.



9924
Clover Mini Beading Loom

1 set/pack	3 packs/box
Package Size	22 x 12 x 2 cm

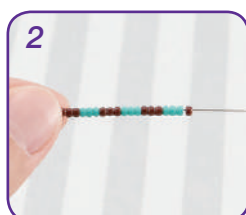


Mini Beading Loom for "quick 'n easy" accessories!

How to use



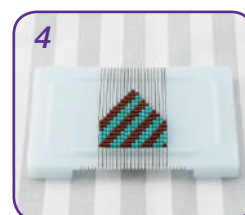
Wind warp thread across loom.



Thread beads onto left thread using needle.



Weave beads by positioning between warp threads.



Continue to follow your design to create the embellishment.

Beading Loom

Enjoy making a variety of beaded art of many different sizes!

Beading made simple.

Perfectly assembled and gentle on even the most intricate projects.

The sophisticated thread holder keeps the warp threads precisely in place and makes beading easy for beginners as well.



9910
Clover Beading Loom

1 set/box
Package Size 30 x 12 x 8 cm

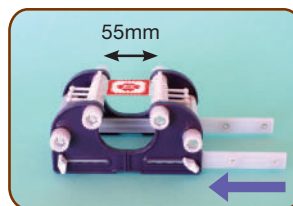
* Package does not include beads or thread.



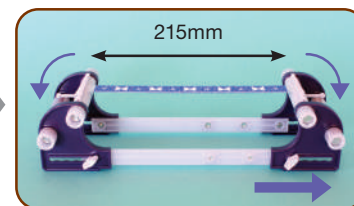
Create everything from accessories to embellishments.



Shortest position



Longest position



* Wind woven piece onto winding beam to create even longer works.

Stopper for preventing the warp threads coming undone.

Round beads (11/0) and small round beads can be used with this loom.

You can create different warp threads to match two different bead sizes.

Thread holder for fixing the warp threads in place

With a comb to align and straighten warp threads!

Easily and accurately adjust the thread length in units of 1cm depending on the size of each work.

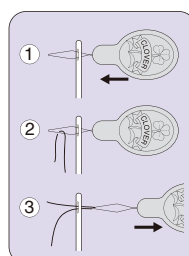
- Create beautiful beaded artwork by weaving the ends of threads in with the beads for clean ends.
- You can bead up to 1.3m by winding the woven works onto the winding beam.
- Easily wind the beadwork horizontally with the outer dial.



9911
Clover Beading Needles (Assortment)

3 needles/pack 3 packs/box
Package Size 15.2 x 5 x 2 cm

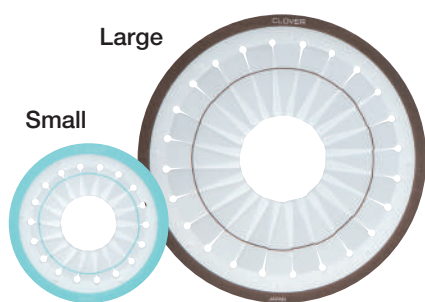
- Thin needles—perfect for bead weaving!
- Long: for wider weaving works.
- Short: for narrow works and thread finishing.



Diameter	Length
0.41 mm	48.5 mm
0.41 mm	54.6 mm
0.46 mm	93.0 mm

Rosette Maker

It is so easy to create beautiful Rosettes!
The parts set included will enable you to create a Rosette.



		Small maker		Large maker	
Finished size (approx.)					
		4.5 cm	5 cm	8 cm	9 cm
Ribbon	Width	15 mm	18 mm/22 mm	24 mm	36 mm
	Length	60 cm	60 cm	90 cm	110 cm

8430
Rosette Maker(Small)





1 set/pack	3 packs/box
Package Size	22 x 12.2 x 0.9 cm




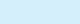
Contents


Parts set

Plate 

Center part 


Brooch base (felt) 

Pin back 

Stickers 



8431
Rosette Maker(Large)

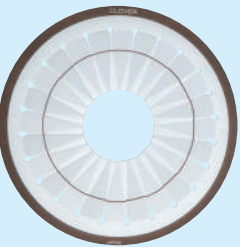



1 set/pack	3 packs/box
Package Size	22 x 14.5 x 1.1 cm





Contents


Parts set

Plate 

Center part 


Brooch base (felt) 

Pin back 

Stickers 

Parts set for the Rosette Maker(sold separately).


8432
Rosette Parts Set(Small)





1 set/pack	3 packs/box
Package Size	18 x 8 x 0.9 cm




Contents

Center part 


Brooch base (felt) 

Pin back 

Stickers 




8433
Rosette Parts Set(Large)





1 set/pack	3 packs/box
Package Size	19 x 8 x 1.1 cm




Contents

Center part 

Brooch base (felt) 

Pin back 

Stickers 

Memo

Index

5-in-1 Sliding Gauge	9506	49	G Graph Ruler	7702/7703	48	S Seams Right	9507	49
A Adapter Ball Tip	9104	74	H Hair Pin Lace Tool	3104	83	Self Threading Needles (Assorted)	2006	33
Adapter Iron Tip (Large)	9103	74	Handy Thread Twister	9942	85	Sewing Gauge	7705	49
Adapter Slim Line Tip	9105	74	"HERA"™ Marker	490/NV	47	Single Needle Felting Tool	8902	86
Adjustable Ring Thimble	610	39	"HERA"™ Marker For Appliqué & Sewing	4002	47	Slash Cutter	499	66
Adjustable Ring Thimble with Plate	611	39	Hold It Precision Stiletto	7807	59	Sliding Gauge	7706	49
Air Erasable Marker	5030/5031/5032	42	Hot Hemmer	7700/7701	51	Snag Repair Needles	2512	36
Amour Crochet Hook	1043-1059	18	Huck Embroidery Needles	2012	34	Soft Jumbo Stitch Ring Markers	3108	27
Amour Crochet Hook	1220-1226	19	I Iron Finger	7802	59	Soft Stitch Ring Markers	3107	27
Amour Crochet Hook Set	3674	18	Iron-On Transfer Pencil	5004/5005	43	Soft Touch Crochet Hook	1001-1010	16
Amour Crochet Hook Set	3675	19	J Jumbo Cable Stitch Holder Set "U"	3008	24	Soft Touch Crochet Hook	1020-1027	16
Antique Yarn Threader	3114	22	Jumbo Darning Needle Set	340	21	Soft Touch Thread Pick	4910	57
Appliqué Pins	231	37	Jumbo Locking Stitch Markers	3109	29	Spare Bobbin Set	8107/8108	88
B Ball Point Awl	876	41	Jumbo Point Protectors	3110/3112	29	Speed Needle Refill	8907	86
Bamboo Knitting Needles "Takumi"™	3011-3998	4	Jumbo Stitch Ring Markers	354	27	Split Ring Markers	347	27
Bamboo Knitting Repair Hooks	3009	26	Jumbo Wonder Clips	3157/3182/3186	63	Spring Tape Measure	806	57
Bamboo Marking Pins	3143	22	K "Kantan Couture Bead" Embroidery Tool	9900	78	Stack 'n Store Bobbin Tower	9508	60
Beading Needles	233	34	"Kantan Couture" Bead Embroidery Tool Needle Refill	9901	78	Stitch Guide	7708	60
Bias Tape Cutting Ruler (mm Gauge)	57-924	71	"Kantan Couture" Bead Embroidery Tool Thread	9902/9904	78	Stitch Markers Triangle	3148/3149/3150	27
Bias Tape Maker	464	72	Kanzashi Flower Maker	8483-8487	80	Stitch Ring Markers	329	27
Black Gold Needles	4960-4983	32	Knitting Accessory Set	3003	23	Storage Case for Bobbin Tatting Shuttle	8109	88
Bobbin Tatting Shuttle	8105/8106	88	Knitting Accessory Set for Beginners	3034	28	Storage Case for Tatting Shuttle	8110	88
Bodkin (2 Types)	4001	56	Knitting Accessory Set for Socks	3035	28	Straight Tailor's Awl	485/W	41
Bordeaux Ultimate Scissors	4940/4941/4942	67	Knitting Bobbin Set	332	24	Super Jumbo Tapestry Needle Set	3113	21
Buttonhole Cutter	484/W	40	Knitting Counter	336	23	Supersize 5-in-1 Sliding Gauge	9585	50
C Cable Stitch Holders	330	24	Knitting Needle Gauge	3147	26	Sweetheart Rose Maker	8472	81
Cable Stitch Holders (U-Shaped)	341	24	Knitting Needle Tube Case	3120	30	Swivel Ring	6192	64
Chaco Liner	469	45	Knitting Register	328	23	T Tapered Tailor's Awl	486/W	41
Chaco Liner Pen Style	4710-4714	44	L Lace Darning Needle Set	3168	21	Tassel Maker	9940/9941	85
Chaco Liner Refill	470	45	Locking Stitch Markers	353	29	Tatting Shuttle	473/8101-8103	89
Chacopel Fine	418	43	Locking Stitch Markers with Clip	3165	28	Thread Clipper "KUROHA"	415	54
Chacopen Blue with Eraser (Water Erasable)	5013	42	Loop Pressing Bars	4052	57	Thread Cutter Pendant	454/455	54
Circular Stitch Holder	3161/3162	25	M Magnet Pin Caddy	4105	55	Threader with Cutter "PETIT CUT"	478	53
Claw and Mat Cleaner	8919	87	Magnetic Snap Closures	6240-6245	64	Trace 'n Create Bag Templates	9576	76
Clip 'n Glide Bodkin	9582	56	Marbled Glass Head Pins	2511	37	Trace 'n Create Quilt Templates	9578	75
Clover Beading Loom	9910	91	Marking Pins for Knitting	325	22	Trace 'n Create Quilt Templates	9514	75
Clover Beading Needles (Assortment)	9911	91	Mesh Transfer Canvas	474	57	Trace 'n Create Templates	9577	76
Clover Embroidery Hoop	8812/8813	78	Mini Flower Loom	3139	83	Tracing Paper "Clover Chacopy"	434	45
Clover Mini Beading Loom	9924	90	Mini Iron II™ "The Adapters"	8003, 8004, 8005	74	Tracing Wheel (Blunt Edges)	481/W	40
Clover Yarn Threader	3142	22	Mini Knitting Counter	3118	23	Tracing Wheel (Serrated Edges)	480/W	40
Coil Knitting Needle Holders	3122/3123	30	Mini Weaving Loom	3176/3177	90	Triangle Tailor's Chalk	432	45
Coin Thimble (Medium)	6014	39	Mini Wonder Clips	3188/3189	61	W Water Erasable Marker	515/516	42
Create-a-Strap	9510/9511	65	N Natural Fit Leather Thimbles	6028/6029/6030	38	Water Soluble Pencil	5000-5003	43
Curve Ruler with Mini Ruler	7704	48	Natural Wool Roving	7920-7939	87	White Marking Pen (Fine)	517	42
Curved Tailor's Awl	4880	41	Needle Felting Appliqué Mold	8928	87	Wonder Clips (10 pcs.)	3155/3180/3185	62
Cutting Mat (Inch Gauge)	7520/7521/7522	71	Needle Felting Mat	8910/8911	87	Wonder Clips (100 pcs.)	3159	63
Cutting Mat (mm Gauge)	4060	71	Needle Felting Tool	8900	86	Wonder Clips (50 pcs.)	3156/3181/3183	62
D Darning Needle Set	339	21	Needle Felting Tool Refill Needle	8905/8906	86	Wonder Knitter™	3101	82
Darning Needle Set (Bent Tip)	3121	21	No-Hassle Triangles Gauge	9579	58	Wrap 'n Fuse Piping	9512/9517/9518	65
Darning Needles with Latch Hook Eye	3160	21	O Open Sided Thimble	6017/6018	39	Y Yarn Cutter Pendant	3105/3106	23
Desk Needle Threader	4071/4072/4073	52	P Patchwork Board "MULTI"	57-872	71	Yarn Guide	348	23
Dome Threaded Needle Case	625	54	Patchwork Pins	232	37			
Double Ended Tunisian Crochet Hook	1305/G-1308/J	20	Patchwork Pins (Fine)	2507	37			
Double Needle Threader	462/NV	53	Patchwork Scissors	493	68			
Double Sided Basting Tape	9505	57	Patchwork Templates	494	58			
Double Sided Thimble	616	39	Pattern Chart Marker Set	3164	23			
Double Tracing Wheel	487/W	40	Pen Style Needle Felting Tool	8901	86			
Double-Ended Stitch Holders	351/352/3006	25	Pencil Sharpener	4003	43			
D-Rings	6180-6183	64	Picot Gauge Set	8104	89			
E Easy Loop Turner	472	57	Pin 'n Stow	9575	55			
Elastic Lock Set	9583	56	Point 2 Point Turner	7803	59			
Embroidery Needles (Blunt Tip Type) Fine	2010	34	Point Protectors	333	29			
Embroidery Stitching Tool	8800	77	Point Protectors and Stopper	3140	29			
Embroidery Stitching Tool Needle Refill	8801-8804	77	Point Protectors for Circular Knitting Needles	3004/3005	29			
Embroidery Stitching Tool Needle Threader	8810	77	Point Protectors Petit	3141	29			
Embroidery Threader	8611	53	Pom-Pom Maker	3124-3128	84			
Eraser Pen	518	42	Protect and Grip Thimble	6025/6026/6027	38			
F Fabric Adhesive Stick	514	57	Q QUICK BIAS	700	58			
Finger Presser	495	47	Quick Locking Stitch Marker Set	3033	28			
Flex 'n Glide Bodkins	9581	56	Quick Locking Stitch Markers	3030/3031/3032	28			
Flower Frill Templates	8460/8461/8462	81	"QUICK" Yo-Yo Maker	8700-8703, 8708	79			
Flower Head Pins	2505/2506/2510	36	"QUICK" Yo-Yo Maker (Heart-Shape)	8705	80			
Flower Loom	3146	83	"QUICK" Yo-Yo Maker (Flower-Shape)	8706	79			
Fork Blocking Pins	3163	22	Quilt Needle Threader	466	53			
Fork Pins	240	37	Quilting Needles	468	33			
French Knitter —Bead Jewelry Maker—	3100	82	Quilting Pins	2508	37			
Fuse 'n Gather, Fusible Gathering Tape	9526/9527	65	Quilting Pins (Fine)	2509	37			
Fusible Bias Tape Maker	4011-4015	73	R Refill Cartridge for Chaco Liner Pen Style	4720-4724	44			
Fusible Web	4041/4042	73	Roll & Press	7812	46			
G "GETAWAY" Knitting Needle Case	3615	30	Rosette Maker	8430/8431	92			
Gold Eye Appliqué Needles	497	33	Rosette Parts Set	8432/8433	92			
Gold Eye Chenille Needles	234	35	Rotary Blade Refills	7508-7515	70			
Gold Eye Embroidery Needles	235	35	Rotary Cutter	7500-7503	69			
Gold Eye Milliners Needles	236	35	S Sashico Needles	2007	34			
Gold Eye Quilting Needles Between	496	33	Sashico Needles (Long Type)	2009	34			
Gold Eye Sharps Needles	237/10	35	Seam Marker Set	7707	50			
Gold Eye Tapestry Needles	238, 238/24	35	Seam Ripper	463, 482/W	41			

Index

1001-1010	Soft Touch Crochet Hook	16	351/352	Double-Ended Stitch Holders	25	7920-7939	Natural Wool Roving	87
1020-1027	Soft Touch Crochet Hook	16	353	Locking Stitch Markers	29	8003, 8004, 8005	Mini Iron II™ "The Adapters"	74
1043-1059	Amour Crochet Hook	18	354	Jumbo Stitch Ring Markers	27	806	Spring Tape Measure	57
1220-1226	Amour Crochet Hook	19	3615	"GETAWAY" Knitting Needle Case	30	8101	Tatting Shuttle (Large)	89
1305/G-1308/J	Double Ended Tunisian Crochet Hook	20	3674	Amour Crochet Hook Set	18	8102	Tatting Shuttle (5 pcs.)	89
2006	Self Threading Needles (Assorted)	33	3675	Amour Crochet Hook Set	19	8103	Tatting Shuttle (Large/5 pcs.)	89
2007	Sashico Needles	34	4001	Bodkin (2 Types)	56	8104	Picot Gauge Set	89
2009	Sashico Needles (Long Type)	34	4002	"HERA"™ Marker For Appliqué & Sewing	47	8105/8106	Bobbin Tatting Shuttle	88
2010	Embroidery Needles (Blunt Tip Type) Fine	34	4003	Pencil Sharpener	43	8107/8108	Spare Bobbin Set	88
2012	Huck Embroidery Needles	34	4011-4015	Fusible Bias Tape Maker	73	8109	Storage Case for Bobbin Tatting Shuttle	88
231	Appliqué Pins	37	4041/4042	Fusible Web	73	8110	Storage Case for Tatting Shuttle	88
232	Patchwork Pins	37	4052	Loop Pressing Bars	57	8430/8431	Rosette Maker	92
233	Beading Needles	34	4060	Cutting Mat (mm Gauge)	71	8432/8433	Rosette Parts Set	92
234	Gold Eye Chenille Needles	35	4071/4072/4073	Desk Needle Threader	52	8460/8461/8462	Flower Frill Templates	81
235	Gold Eye Embroidery Needles	35	4105	Magnet Pin Caddy	55	8472	Sweetheart Rose Maker	81
236	Gold Eye Milliners Needles	35	415	Thread Clipper "KUROHA"	54	8483-8487	Kanzashi Flower Maker	80
237/10	Gold Eye Sharps Needles	35	418	Chacopel Fine	43	8611	Embroidery Threader	53
238, 238/24	Gold Eye Tapestry Needles	35	432	Triangle Tailor's Chalk	45	8700-8703, 8708	"QUICK" Yo-Yo Maker	79
240	Fork Pins	37	434	Tracing Paper "Clover Chacopy"	45	8705	"QUICK" Yo-Yo Maker (Heart-Shape)	80
2505	Flower Head Pins 0.55 mm	36	454/455	Thread Cutter Pendant	54	8706	"QUICK" Yo-Yo Maker (Flower-Shape)	79
2506	Flower Head Pins (Boxed)	36	462/NV	Double Needle Threader	53	876	Ball Point Awl	41
2507	Patchwork Pins (Fine)	37	463	Seam Ripper	41	8800	Embroidery Stitching Tool	77
2508	Quilting Pins	37	464	Bias Tape Maker	72	8801-8804	Embroidery Stitching Tool Needle Refill	77
2509	Quilting Pins (Fine)	37	466	Quilt Needle Threader	53	8810	Embroidery Stitching Tool Needle Threader	77
2510	Flower Head Pins 0.45 mm	36	468	Quilting Needles	33	8812/8813	Clover Embroidery Hoop	78
2511	Marbled Glass Head Pins	37	469	Chaco Liner	45	8900	Needle Felting Tool	86
2512	Snag Repair Needles	36	470	Chaco Liner Refill	45	8901	Pen Style Needle Felting Tool	86
3003	Knitting Accessory Set	23	4710-4714	Chaco Liner Pen Style	44	8902	Single Needle Felting Tool	86
3004/3005	Point Protectors for Circular Knitting Needles	29	4720-4724	Refill Cartridge for Chaco Liner Pen Style	44	8905/8906	Needle Felting Tool Refill Needle	86
3006	Double-Ended Stitch Holders (Medium)	25	472	Easy Loop Turner	57	8907	Speed Needle Refill	86
3008	Jumbo Cable Stitch Holder Set "U"	24	474	Mesh Transfer Canvas	57	8910/8911	Needle Felting Mat	87
3009	Bamboo Knitting Repair Hooks	26	478	Threader with Cutter "PETIT CUT"	53	8919	Claw and Mat Cleaner	87
3011-3998	Bamboo Knitting Needles "Takumi"	4	479	Tatting Shuttle	89	8928	Needle Felting Appliqué Mold	87
3030/3031/3032	Quick Locking Stitch Markers	28	480/W	Tracing Wheel (Serrated Edges)	40	9103	Adapter Iron Tip (Large)	74
3033	Quick Locking Stitch Marker Set	28	481/W	Tracing Wheel (Blunt Edges)	40	9104	Adapter Ball Tip	74
3034	Knitting Accessory Set for Beginners	28	482/W	Seam Ripper	41	9105	Adapter Slim Line Tip	74
3035	Knitting Accessory Set for Socks	28	484/W	Buttonhole Cutter	40	9505	Double Sided Basting Tape	57
3100	French Knitter —Bead Jewelry Maker—	82	485/W	Straight Tailor's Awl	41	9506	5-in-1 Sliding Gauge	49
3101	Wonder Knitter™	82	486/W	Tapered Tailor's Awl	41	9507	Seams Right	49
3104	Hair Pin Lace Tool	83	487/W	Double Tracing Wheel	40	9508	Stack 'n Store Bobbin Tower	60
3105/3106	Yarn Cutter Pendant	23	4880	Curved Tailor's Awl	41	9510/9511	Create-a-Strap	65
3107	Soft Stitch Ring Markers	27	490/NV	"HERA"™ Marker	47	9512/9517/9518	Wrap 'n Fuse Piping	65
3108	Soft Jumbo Stitch Ring Markers	27	4910	Soft Touch Thread Pick	57	9514	Trace 'n Create Quilt Templates	75
3109	Jumbo Locking Stitch Markers	29	493	Patchwork Scissors	68	9526/9527	Fuse 'n Gather, Fusible Gathering Tape	65
3110/3112	Jumbo Point Protectors	29	494	Patchwork Templates	58	9575	Pin 'n Stow	55
3113	Super Jumbo Tapestry Needle Set	21	4940/4941/4942	Bordeaux Ultimate Scissors	67	9576	Trace 'n Create Bag Templates	76
3114	Antique Yarn Threader	22	495	Finger Presser	47	9577	Trace 'n Create Templates	76
3118	Mini Knitting Counter	23	496	Gold Eye Quilting Needles Between	33	9578	Trace 'n Create Quilt Templates	75
3120	Knitting Needle Tube Case	30	4960-4983	Black Gold Needles	32	9579	No-Hassle Triangles Gauge	58
3121	Darning Needle Set (Bent Tip)	21	497	Gold Eye Appliqué Needles	33	9581	Flex 'n Glide Bodkins	56
3122/3123	Coil Knitting Needle Holders	30	499	Slash Cutter	66	9582	Clip 'n Glide Bodkin	56
3124-3128	Pom-Pom Maker	84	5000-5003	Water Soluble Pencil	43	9583	Elastic Lock Set	56
3139	Mini Flower Loom	83	5004/5005	Iron-On Transfer Pencil	43	9585	Supersize 5-in-1 Sliding Gauge	50
3140	Point Protectors and Stopper	29	5013	Chacopen Blue with Eraser (Water Erasable)	42	9900	"Kantan Couture" Bead Embroidery Tool	78
3141	Point Protectors Petit	29	5030/5031/5032	Air Erasable Marker (Purple)	42	9901	"Kantan Couture" Bead Embroidery Tool Needle Refill	78
3142	Clover Yarn Threader	22	514	Fabric Adhesive Stick	57	9902/9904	"Kantan Couture" Bead Embroidery Tool Thread	78
3143	Bamboo Marking Pins	22	515/516	Water Erasable Marker	42	9910	Clover Beading Loom	91
3146	Flower Loom	83	517	White Marking Pen (Fine)	42	9911	Clover Beading Needles	91
3147	Knitting Needle Gauge	26	518	Eraser Pen	42	9924	Clover Mini Beading Loom	90
3148/3149/3150	Stitch Markers Triangle	27	57-872	Patchwork Board "MULTI"	71	9940/9941	Tassel Maker	85
3155/3156	Wonder Clips	62	57-924	Bias Tape Cutting Ruler (mm Gauge)	71	9942	Handy Thread Twister	85
3157	Jumbo Wonder Clips (24 pcs.)	63	6014	Coin Thimble (Medium)	39			
3159	Wonder Clips (100 pcs.)	63	6017/6018	Open Sided Thimble	39			
3160	Darning Needles with Latch Hook Eye	21	6025/6026/6027	Protect and Grip Thimble	38			
3161/3162	Circular Stitch Holder	25	6028/6029/6030	Natural Fit Leather Thimbles	38			
3163	Fork Blocking Pins	22	610	Adjustable Ring Thimble	39			
3164	Pattern Chart Marker Set	23	611	Adjustable Ring Thimble with Plate	39			
3165	Locking Stitch Markers with Clip	28	616	Double Sided Thimble	39			
3168	Lace Darning Needle Set	21	6180-6183	D-Rings	64			
3176/3177	Mini Weaving Loom	90	6192	Swivel Ring	64			
3180/3181	Wonder Clips (Neon Green)	62	6240-6245	Magnetic Snap Closures	64			
3182	Jumbo Wonder Clips (Neon Green/24 pcs.)	63	625	Dome Threaded Needle Case	54			
3183/3185	Wonder Clips (Assortment)	62	700	QUICK BIAS	58			
3186	Jumbo Wonder Clips (12 pcs.)	63	7500-7503	Rotary Cutter	69			
3188/3189	Mini Wonder Clips	61	7508-7515	Rotary Blade Refills	70			
325	Marking Pins for Knitting	22	7520/7521/7522	Cutting Mat (Inch Gauge)	71			
328	Knitting Register	23	7700/7701	Hot Hemmer	51			
329	Stitch Ring Markers	27	7702/7703	Graph Ruler	48			
330	Cable Stitch Holders	24	7704	Curve Ruler with Mini Ruler	48			
332	Knitting Bobbin Set	24	7705	Sewing Gauge	49			
333	Point Protectors	29	7706	Sliding Gauge	49			
336	Knitting Counter	23	7707	Seam Marker Set	50			
339	Darning Needle Set	21	7708	Stitch Guide	60			
340	Jumbo Darning Needle Set	21	7802	Iron Finger	59			
341	Cable Stitch Holders (U-Shaped)	24	7803	Point 2 Point Turner	59			
347	Split Ring Markers	27	7807	Hold It Precision Stiletto	59			
348	Yarn Guide	23	7812	Roll & Press	46			

www.clover-mfg.com
info@clover-mfg.com

CLOVER MFG. CO., LTD.

3-15-5 Nakamichi, Higashinari-ku, Osaka, Japan

897259

JAN 2019
200KMT